

**TEXAS
EDUCATION
AGENCY**

AUSTIN, TEXAS

**Secondary School
Completion and Dropouts
in Texas Public Schools
2002-03**

County Supplement

Alphabetic by County

**DEPARTMENT OF
ACCOUNTABILITY
AND
DATA QUALITY**

**DIVISION OF
ACCOUNTABILITY
RESEARCH**

AUGUST 2004

**Secondary School
Completion and Dropouts
in Texas Public Schools
2002-03**

County Supplement

Alphabetic by County

Project Staff

David Lynch
Mei-Ling Shen
Linda A. Roska

Editorial Staff

Sue E. Mutchler
Richard Kallus

Division of Accountability Research
Department of Accountability and Data Quality
Texas Education Agency
August 2004

Texas Education Agency

Shirley Neeley, Commissioner of Education

Robert Scott, Chief Deputy Commissioner

Department of Accountability and Data Quality

Criss Cloudt, Associate Commissioner

Division of Accountability Research

Karen Dvorak, Managing Director

Citation. Texas Education Agency. (2004). *Secondary school completion and dropouts in Texas public schools, 2002-03: County supplement* (Document No. GE04 601 11). Austin, TX: Author.

Keywords. *Secondary education, high school completion, dropouts, annual dropout rate, longitudinal dropout rate, completion rate, graduation rate, Grades 7-8, Grades 9-12, Grades 7-12.*

Additional copies of this document may be purchased using the order form in the back of this publication. Additional information about this report may be obtained by contacting the Texas Education Agency Division of Accountability Research by phone at (512) 475-3523, by e-mail at research@tea.state.tx.us, or via the division website at <http://www.tea.state.tx.us/research/>.

Copyright © Notice. The materials are copyrighted © and trademarked ™ as the property of the Texas Education Agency (TEA) and may not be reproduced without the express written permission of TEA, except under the following conditions: (1) Texas public school districts, charter schools, and Education Service Centers may reproduce and use copies of the Materials and Related Materials for the districts' and schools' educational use without obtaining permission from TEA; (2) residents of the state of Texas may reproduce and use copies of the Materials and Related Materials for individual personal use only without obtaining written permission of TEA; (3) any portion reproduced must be reproduced in its entirety and remain unedited, unaltered and unchanged in any way; and (4) no monetary charge can be made for the reproduced materials or any document containing them; however, a reasonable charge to cover only the cost of reproduction and distribution may be charged. Private entities or persons located in Texas that are **not** Texas public school districts, Texas Education Service Centers, or Texas charter schools or any entity, whether public or private, educational or non-educational, located **outside the state of Texas** **MUST** obtain written approval from TEA and will be required to enter into a license agreement that may involve the payment of a licensing fee or a royalty. For information contact: Office of Copyrights, Trademarks, License Agreements, and Royalties, Texas Education Agency, 1701 N. Congress Ave., Austin, TX 78701-1494; phone 512-463-7004; email: copyrights@tea.state.tx.us.

Contents

Introduction	1
Calculations	3
County Listings	5
Table 1. Annual Dropout Rates, Grades 7-8, by Student Group, Texas Public Schools, 2002-03: County Listing.....	7
Table 2. Annual Dropout Rates, Grades 7-12, by Student Group, Texas Public Schools, 2002-03: County Listing.....	13
Table 3. Longitudinal Completion/Student Status Rates, Grades 9-12, by Student Group, Texas Public Schools, Class of 2003: County Listing.....	19
Table 4. Longitudinal Completion/Student Status Cohort, Grades 9-12, Texas Public Schools, Class of 2003: County Listing	47
Notes on Tables 1-4	53
Figure 1. Comparing Annual and Longitudinal Dropout Counts at the District or Campus Level.....	55
References	59

Introduction

The listings in this report provide secondary school completion and dropout data at the county level as a supplement to *Secondary School Completion and Dropouts in Texas Public Schools, 2002-03* (Texas Education Agency [TEA], 2004a). This supplement includes annual dropout rates and longitudinal rates for secondary school graduates, General Educational Development (GED) certificate recipients, continuing students, and dropouts. County listings of 2002-03 annual dropout rates and completion/student status rates for the class of 2003 are presented. A listing of the counts that make up the longitudinal cohort is also presented. A schematic is provided illustrating the relationship, at the district or campus level, of annual and longitudinal dropout counts. Supplemental listings at the district and campus levels are available in *Secondary School Completion and Dropouts in Texas Public Schools, 2002-03: District Supplement* (TEA, 2004c) and *Secondary School Completion and Dropouts in Texas Public Schools, 2002-03: District and Campus Supplement* (TEA, 2004b).

Calculations

All data used in this report were collected and reported by Texas school districts and charter schools through the Public Education Information Management System (PEIMS) maintained by the Texas Education Agency (TEA). The rate calculations are the same as those used in the Academic Excellence Indicator System (AEIS).

In this report, the annual dropout rate is the percentage of students who dropped out of either Grades 7-8 or Grades 7-12 during the 2002-03 school year:

$$\text{annual dropout rate} = \frac{\text{number of dropouts during the school year}}{\text{total number of students served during the school year}} \times 100$$

Dropouts are defined and counted according to the *2003-2004 Public Education Information Management System Addendum Version Data Standards* (TEA, 2003) and *Secondary School Completion and Dropouts in Texas Public Schools, 2002-03* (TEA, 2004a). The total number of students in the denominator is the cumulative number of students in attendance in the county at any time during the school year.

The longitudinal rates analyze student progress through high school. A cohort of students is tracked over five years, from the time the students enter Grade 9 in the Texas public school system until the fall following their anticipated graduation date. The cohort is defined as the group of students who began Grade 9 for the first time in the same school year plus all students who transferred into the Texas public school system on grade level during the next four years. The final status of each student is determined the year graduation was expected. The four possible statuses are: graduated, received a General Educational Development (GED) certificate, continued high school, or dropped out. Each cohort is identified by the starting grade and anticipated year of graduation. For example, members of the Grade 9 cohort are identified as students who attended Grade 9 for the first time in the 1999-00 school year and are expected to have graduated in spring 2003.

A subset of this cohort, called a class, is used to calculate the longitudinal rates. A class consists of members of a cohort less those who transferred out of the Texas public school system or could not be tracked. The longitudinal rates are based on the final statuses of students; therefore, only students from the cohort for whom final statuses are assigned are included as members of the class. Students who transfer out of the Texas public school system are removed from the count of students in the class. Each class is identified by the anticipated year of graduation. For example, members of the class of 2003 are identified as students who attended Grade 9 for the first time in the 1999-00 school year and are expected to have graduated in spring 2003.

As an example, the longitudinal rate for graduates is calculated by dividing the number of students who graduated by the number of students in the class:

$$\text{longitudinal rate, graduated} = \frac{\text{number of students graduating by year 4}}{(\text{number of students entering Grade 9}) - (\text{transfers out}) + (\text{transfers in})} \times 100$$

Longitudinal rates for GED certificate recipients, students who continued high school, and dropouts are calculated in a similar manner. The sum of the four rates is equal to 100 percent.

Students who graduated, were continuing in high school, or earned GED certificates make up the completion rate for the class of 2003. This rate is a base indicator in Texas public school accountability and is denoted by the label Completion II. Completion I includes graduates and continuing students only. For further explanation of the completion rate, see *Secondary School Completion and Dropouts in Texas Public Schools, 2002-03* (TEA, 2004a).

County Listings

Table 1
Annual Dropout Rates, Grades 7-8,
by Student Group, Texas Public Schools, 2002-03:
County Listing

Table 1
Annual Dropout Rates, Grades 7-8, by Student Group, Texas Public Schools, 2002-03: County Listing

County	All students			Rate by student group (%)			Econ. dis.
	Dropouts	Total	Rate (%)	African American	Hispanic	White	
ANDERSON	-	1,481	-	-	-	-	-
ANDREWS	-	523	-	-	-	-	-
ANGELINA	-	2,641	-	-	-	-	-
ARANSAS	-	555	-	-	-	-	-
ARCHER	-	331	-	-	-	-	-
ARMSTRONG	-	61	-	-	-	-	-
ATASCOSA	-	1,422	-	-	-	-	-
AUSTIN	-	908	-	-	-	-	-
BAILEY	-	244	-	-	-	-	-
BANDERA	-	597	-	-	-	-	-
BASTROP	-	2,068	-	-	-	-	-
BAYLOR	-	127	-	-	-	-	-
BEE	-	902	-	-	-	-	-
BELL	29	8,661	0.3	0.4	0.3	0.3	0.3
BEXAR	101	42,698	0.2	0.2	0.3	0.1	0.2
BLANCO	-	268	-	-	-	-	-
BORDEN	-	42	-	-	-	-	-
BOSQUE	-	607	-	-	-	-	-
BOWIE	-	2,707	-	-	-	-	-
BRAZORIA	-	8,249	-	-	-	-	-
BRAZOS	5	3,548	0.1	-	-	-	-
BREWSTER	-	255	-	-	-	-	-
BRISCOE	-	53	-	-	-	-	-
BROOKS	-	325	-	-	-	-	-
BROWN	-	1,175	-	-	-	-	-
BURLESON	-	517	-	-	-	-	-
BURNET	-	1,133	-	-	-	-	-
CALDWELL	-	1,039	-	-	-	-	-
CALHOUN	-	649	-	-	-	-	-
CALLAHAN	-	521	-	-	-	-	-
CAMERON	34	13,848	0.2	-	0.3	-	0.3
CAMP	-	402	-	-	-	-	-
CARSON	-	240	-	-	-	-	-
CASS	-	990	-	-	-	-	-
CASTRO	-	300	-	-	-	-	-
CHAMBERS	-	912	-	-	-	-	-
CHEROKEE	-	1,291	-	-	-	-	-
CHILDRESS	-	184	-	-	-	-	-
CLAY	-	368	-	-	-	-	-
COCHRAN	-	155	-	-	-	-	-
COKE	-	114	-	-	-	-	-
COLEMAN	-	289	-	-	-	-	-
COLLIN	10	16,861	0.1	-	-	-	-
COLLINGSWORTH	-	110	-	-	-	-	-
COLORADO	-	575	-	-	-	-	-
COMAL	-	3,004	-	-	-	-	-
COMANCHE	-	451	-	-	-	-	-
CONCHO	-	71	-	-	-	-	-
COOKE	-	1,069	-	-	-	-	-
CORYELL	-	1,797	-	-	-	-	-
COTTLE	-	42	-	-	-	-	-
CRANE	-	141	-	-	-	-	-
CROCKETT	-	138	-	-	-	-	-
CROSBY	-	252	-	-	-	-	-
CULBERSON	-	121	-	-	-	-	-
DALLAM	-	279	-	-	-	-	-
DALLAS	228	67,572	0.3	0.3	0.5	0.1	0.4
DAWSON	-	432	-	-	-	-	-
DEAF SMITH	-	686	-	-	-	-	-
DELTA	-	207	-	-	-	-	-

Note. A dash (-) indicates data are not reported to protect student anonymity.

Table 1
Annual Dropout Rates, Grades 7-8, by Student Group, Texas Public Schools, 2002-03: County Listing

County	All students			Rate by student group (%)			
	Dropouts	Total	Rate (%)	African American	Hispanic	White	Econ. dis.
DENTON	7	13,170	0.1	-	-	-	-
DEWITT	-	800	-	-	-	-	-
DICKENS	-	83	-	-	-	-	-
DIMIT	-	409	-	-	-	-	-
DONLEY	-	119	-	-	-	-	-
DUVAL	-	496	-	-	-	-	-
EASTLAND	-	529	-	-	-	-	-
ECTOR	11	4,420	0.2	-	0.3	-	0.3
EDWARDS	-	125	-	-	-	-	-
EL PASO	41	25,315	0.2	-	0.2	-	0.1
ELLIS	-	4,703	-	-	-	-	-
ERATH	-	950	-	-	-	-	-
FALLS	-	549	-	-	-	-	-
FANNIN	-	933	-	-	-	-	-
FAYETTE	-	597	-	-	-	-	-
FISHER	-	106	-	-	-	-	-
FLOYD	-	360	-	-	-	-	-
FOARD	-	48	-	-	-	-	-
FORT BEND	14	13,948	0.1	-	0.3	-	0.2
FRANKLIN	-	268	-	-	-	-	-
FREESTONE	-	564	-	-	-	-	-
FRIO	-	492	-	-	-	-	-
GAINES	-	469	-	-	-	-	-
GALVESTON	14	11,551	0.1	-	0.3	-	0.2
GARZA	-	242	-	-	-	-	-
GILLESPIE	-	535	-	-	-	-	-
GLASSCOCK	-	53	-	-	-	-	-
GOLIAD	-	257	-	-	-	-	-
GONZALES	-	658	-	-	-	-	-
GRAY	-	657	-	-	-	-	-
GRAYSON	-	3,601	-	-	-	-	-
GREGG	-	3,913	-	-	-	-	-
GRIMES	-	714	-	-	-	-	-
GUADALUPE	-	2,906	-	-	-	-	-
HALE	-	1,284	-	-	-	-	-
HALL	-	134	-	-	-	-	-
HAMILTON	-	281	-	-	-	-	-
HANSFORD	-	198	-	-	-	-	-
HARDEMAN	-	140	-	-	-	-	-
HARDIN	-	1,808	-	-	-	-	-
HARRIS	419	106,360	0.4	0.3	0.7	0.1	0.5
HARRISON	-	2,144	-	-	-	-	-
HARTLEY	-	48	-	-	-	-	-
HASKELL	-	186	-	-	-	-	-
HAYS	-	3,396	-	-	-	-	-
HEMPHILL	-	153	-	-	-	-	-
HENDERSON	-	1,835	-	-	-	-	-
HIDALGO	68	24,066	0.3	-	0.3	-	0.2
HILL	-	1,015	-	-	-	-	-
HOCKLEY	-	785	-	-	-	-	-
HOOD	-	1,373	-	-	-	-	-
HOPKINS	-	990	-	-	-	-	-
HOUSTON	-	602	-	-	-	-	-
HOWARD	-	967	-	-	-	-	-
HUDSPETH	-	136	-	-	-	-	-
HUNT	5	2,498	0.2	-	-	-	-
HUTCHINSON	-	732	-	-	-	-	-
IRION	-	67	-	-	-	-	-
JACK	-	301	-	-	-	-	-
JACKSON	-	510	-	-	-	-	-

Note. A dash (-) indicates data are not reported to protect student anonymity.

Table 1
Annual Dropout Rates, Grades 7-8, by Student Group, Texas Public Schools, 2002-03: County Listing

County	All students			Rate by student group (%)			Econ. dis.
	Dropouts	Total	Rate (%)	African American	Hispanic	White	
JASPER	-	1,184	-	-	-	-	-
JEFF DAVIS	-	76	-	-	-	-	-
JEFFERSON	18	6,952	0.3	0.2	1.1	-	0.3
JIM HOGG	-	173	-	-	-	-	-
JIM WELLS	-	1,536	-	-	-	-	-
JOHNSON	6	4,578	0.1	-	-	0.1	-
JONES	-	513	-	-	-	-	-
KARNES	-	426	-	-	-	-	-
KAUFMAN	-	3,315	-	-	-	-	-
KENDALL	-	1,101	-	-	-	-	-
KENT	-	30	-	-	-	-	-
KERR	-	1,241	-	-	-	-	-
KIMBLE	-	127	-	-	-	-	-
KING	-	20	-	-	-	-	-
KINNEY	-	104	-	-	-	-	-
KLEBERG	-	967	-	-	-	-	-
KNOX	-	160	-	-	-	-	-
LA SALLE	-	202	-	-	-	-	-
LAMAR	-	1,513	-	-	-	-	-
LAMB	-	652	-	-	-	-	-
LAMPASAS	-	681	-	-	-	-	-
LAVACA	-	368	-	-	-	-	-
LEE	-	484	-	-	-	-	-
LEON	-	513	-	-	-	-	-
LIBERTY	7	2,573	0.3	-	-	0.3	-
LIMESTONE	-	718	-	-	-	-	-
LIPSCOMB	-	101	-	-	-	-	-
LIVE OAK	-	311	-	-	-	-	-
LLANO	-	318	-	-	-	-	-
LUBBOCK	-	6,735	-	-	-	-	-
LYNN	-	273	-	-	-	-	-
MADISON	-	421	-	-	-	-	-
MARION	-	283	-	-	-	-	-
MARTIN	-	193	-	-	-	-	-
MASON	-	103	-	-	-	-	-
MATAGORDA	-	1,344	-	-	-	-	-
MAVERICK	9	2,044	0.4	-	0.4	-	0.5
MCCULLOCH	-	296	-	-	-	-	-
MCLENNAN	12	6,395	0.2	-	-	-	0.2
MCMULLEN	-	26	-	-	-	-	-
MEDINA	-	1,528	-	-	-	-	-
MENARD	-	62	-	-	-	-	-
MIDLAND	9	3,906	0.2	-	0.3	-	0.3
MILAM	-	757	-	-	-	-	-
MILLS	-	187	-	-	-	-	-
MITCHELL	-	228	-	-	-	-	-
MONTAGUE	-	560	-	-	-	-	-
MONTGOMERY	14	11,139	0.1	-	-	0.1	0.2
MOORE	-	763	-	-	-	-	-
MORRIS	-	447	-	-	-	-	-
MOTLEY	-	33	-	-	-	-	-
NACOGDOCHES	-	1,679	-	-	-	-	-
NAVARRO	-	1,562	-	-	-	-	-
NEWTON	-	472	-	-	-	-	-
NOLAN	-	505	-	-	-	-	-
NUECES	28	9,840	0.3	-	0.4	-	0.3
OCHILTREE	-	313	-	-	-	-	-
OLDHAM	-	180	-	-	-	-	-
ORANGE	-	2,650	-	-	-	-	-
PALO PINTO	-	899	-	-	-	-	-

Note. A dash (-) indicates data are not reported to protect student anonymity.

Table 1
Annual Dropout Rates, Grades 7-8, by Student Group, Texas Public Schools, 2002-03: County Listing

County	All students			Rate by student group (%)			
	Dropouts	Total	Rate (%)	African American	Hispanic	White	Econ. dis.
PANOLA	-	612	-	-	-	-	-
PARKER	-	3,103	-	-	-	-	-
PARMER	-	373	-	-	-	-	-
PECOS	-	516	-	-	-	-	-
POLK	-	1,215	-	-	-	-	-
POTTER	9	5,147	0.2	-	0.3	-	0.3
PRESIDIO	-	314	-	-	-	-	-
RAINS	-	288	-	-	-	-	-
RANDALL	-	1,398	-	-	-	-	-
REAGAN	-	125	-	-	-	-	-
REAL	-	72	-	-	-	-	-
RED RIVER	-	446	-	-	-	-	-
REEVES	-	450	-	-	-	-	-
REFUGIO	-	265	-	-	-	-	-
ROBERTS	-	33	-	-	-	-	-
ROBERTSON	-	562	-	-	-	-	-
ROCKWALL	-	2,072	-	-	-	-	-
RUNNELS	-	409	-	-	-	-	-
RUSK	-	1,245	-	-	-	-	-
SABINE	-	264	-	-	-	-	-
SAN AUGUSTINE	-	236	-	-	-	-	-
SAN JACINTO	-	653	-	-	-	-	-
SAN PATRICIO	-	2,645	-	-	-	-	-
SAN SABA	-	174	-	-	-	-	-
SCHLEICHER	-	105	-	-	-	-	-
SCURRY	-	471	-	-	-	-	-
SHACKELFORD	-	113	-	-	-	-	-
SHELBY	-	809	-	-	-	-	-
SHERMAN	-	136	-	-	-	-	-
SMITH	12	5,185	0.2	-	0.5	-	0.3
SOMERVELL	-	280	-	-	-	-	-
STARR	14	2,401	0.6	-	0.6	-	0.5
STEPHENS	-	280	-	-	-	-	-
STERLING	-	55	-	-	-	-	-
STONEWALL	-	39	-	-	-	-	-
SUTTON	-	133	-	-	-	-	-
SWISHER	-	284	-	-	-	-	-
TARRANT	79	46,777	0.2	0.2	0.3	0.1	0.2
TAYLOR	6	3,869	0.2	-	-	-	-
TERRELL	-	31	-	-	-	-	-
TERRY	-	417	-	-	-	-	-
THROCKMORTON	-	64	-	-	-	-	-
TITUS	-	1,022	-	-	-	-	-
TOM GREEN	-	3,186	-	-	-	-	-
TRAVIS	70	18,898	0.4	0.2	0.7	0.2	0.4
TRINITY	-	406	-	-	-	-	-
TYLER	-	590	-	-	-	-	-
UPSHUR	5	1,209	0.4	-	-	-	-
UPTON	-	152	-	-	-	-	-
UVALDE	-	1,016	-	-	-	-	-
VAL VERDE	21	1,686	1.2	-	1.2	-	1.2
VAN ZANDT	-	1,701	-	-	-	-	-
VICTORIA	-	2,596	-	-	-	-	-
WALKER	-	1,247	-	-	-	-	-
WALLER	-	1,330	-	-	-	-	-
WARD	-	375	-	-	-	-	-
WASHINGTON	-	863	-	-	-	-	-
WEBB	49	8,072	0.6	-	0.6	-	0.6
WHARTON	-	1,363	-	-	-	-	-
WHEELER	-	147	-	-	-	-	-

Note. A dash (-) indicates data are not reported to protect student anonymity.

Table 1
Annual Dropout Rates, Grades 7-8, by Student Group, Texas Public Schools, 2002-03: County Listing

County	All students			Rate by student group (%)			
	Dropouts	Total	Rate (%)	African American	Hispanic	White	Econ. dis.
WICHITA	-	3,677	-	-	-	-	-
WILBARGER	-	470	-	-	-	-	-
WILLACY	-	750	-	-	-	-	-
WILLIAMSON	8	11,164	0.1	-	-	-	-
WILSON	-	1,264	-	-	-	-	-
WINKLER	-	265	-	-	-	-	-
WISE	-	1,503	-	-	-	-	-
WOOD	-	1,049	-	-	-	-	-
YOAKUM	-	281	-	-	-	-	-
YOUNG	-	563	-	-	-	-	-
ZAPATA	10	465	2.2	-	1.8	-	-
ZAVALA	-	405	-	-	-	-	-

Note. A dash (-) indicates data are not reported to protect student anonymity.

Table 2
Annual Dropout Rates, Grades 7-12,
by Student Group, Texas Public Schools, 2002-03:
County Listing

Table 2
Annual Dropout Rates, Grades 7-12, by Student Group, Texas Public Schools, 2002-03: County Listing

County	All students			Rate by student group (%)			Econ. dis.
	Dropouts	Total	Rate (%)	African American	Hispanic	White	
ANDERSON	30	4,172	0.7	0.9	2.0	0.5	0.6
ANDREWS	-	1,542	-	-	-	-	-
ANGELINA	49	7,594	0.6	0.8	1.1	0.5	0.5
ARANSAS	7	1,673	0.4	-	-	0.5	-
ARCHER	-	1,000	-	-	-	-	-
ARMSTRONG	-	176	-	-	-	-	-
ATASCOSA	26	4,130	0.6	-	0.9	-	0.8
AUSTIN	6	2,615	0.2	-	-	-	-
BAILEY	5	682	0.7	-	1.2	-	-
BANDERA	-	1,650	-	-	-	-	-
BASTROP	73	6,011	1.2	2.4	1.7	0.7	1.2
BAYLOR	-	346	-	-	-	-	-
BEE	14	2,547	0.5	-	0.5	0.8	0.5
BELL	177	23,763	0.7	0.9	0.8	0.6	0.8
BEXAR	1,413	125,399	1.1	0.9	1.4	0.5	1.1
BLANCO	-	793	-	-	-	-	-
BORDEN	-	105	-	-	-	-	-
BOSQUE	-	1,620	-	-	-	-	-
BOWIE	27	7,775	0.3	0.4	-	0.3	0.4
BRAZORIA	52	23,015	0.2	0.3	0.3	0.2	0.2
BRAZOS	78	10,012	0.8	1.1	1.4	0.4	1.0
BREWSTER	-	691	-	-	-	-	-
BRISCOE	-	128	-	-	-	-	-
BROOKS	-	864	-	-	-	-	-
BROWN	7	3,497	0.2	-	-	0.2	-
BURLESON	6	1,562	0.4	-	-	-	-
BURNET	10	3,300	0.3	-	-	0.2	-
CALDWELL	33	3,099	1.1	-	1.9	0.4	0.9
CALHOUN	-	1,887	-	-	-	-	-
CALLAHAN	7	1,539	0.5	-	-	0.4	-
CAMERON	419	39,537	1.1	-	1.1	0.2	0.9
CAMP	5	1,060	0.5	-	-	-	-
CARSON	5	634	0.8	-	-	0.9	-
CASS	-	2,961	-	-	-	-	-
CASTRO	20	889	2.2	-	3.1	-	2.3
CHAMBERS	7	2,611	0.3	-	-	0.3	-
CHEROKEE	7	3,635	0.2	-	-	0.2	-
CHILDRESS	-	545	-	-	-	-	-
CLAY	-	1,022	-	-	-	-	-
COCHRAN	8	522	1.5	-	2.3	-	-
COKE	-	841	-	-	-	-	-
COLEMAN	10	843	1.2	-	-	1.3	1.7
COLLIN	132	46,146	0.3	0.4	0.9	0.2	0.5
COLLINGSWORTH	-	335	-	-	-	-	-
COLORADO	6	1,977	0.3	-	-	-	0.6
COMAL	83	9,033	0.9	-	1.4	0.8	1.3
COMANCHE	6	1,272	0.5	-	-	-	-
CONCHO	-	238	-	-	-	-	-
COOKE	6	3,000	0.2	-	-	0.2	-
CORYELL	35	5,265	0.7	0.9	0.8	0.5	0.9
COTTLE	-	159	-	-	-	-	-
CRANE	-	473	-	-	-	-	-
CROCKETT	-	431	-	-	-	-	-
CROSBY	-	715	-	-	-	-	-
CULBERSON	-	319	-	-	-	-	-
DALLAM	7	785	0.9	-	-	-	-
DALLAS	2,100	192,059	1.1	1.3	1.4	0.6	1.0
DAWSON	9	1,337	0.7	-	1.0	-	-
DEAF SMITH	29	1,918	1.5	-	1.7	1.0	1.8
DELTA	-	572	-	-	-	-	-

Note. A dash (-) indicates data are not reported to protect student anonymity.

Table 2
Annual Dropout Rates, Grades 7-12, by Student Group, Texas Public Schools, 2002-03: County Listing

County	All students			Rate by student group (%)			
	Dropouts	Total	Rate (%)	African American	Hispanic	White	Econ. dis.
DENTON	128	36,175	0.4	0.7	0.8	0.2	0.6
DEWITT	11	2,436	0.5	-	0.6	-	-
DICKENS	-	218	-	-	-	-	-
DIMITT	12	1,200	1.0	-	1.1	-	-
DONLEY	-	337	-	-	-	-	-
DUVAL	12	1,451	0.8	-	0.8	-	0.7
EASTLAND	6	1,655	0.4	-	-	0.4	-
ECTOR	308	12,625	2.4	3.1	3.1	1.4	2.1
EDWARDS	6	359	1.7	-	-	-	1.9
EL PASO	907	74,232	1.2	1.1	1.3	0.7	0.8
ELLIS	40	12,856	0.3	-	0.7	0.2	0.3
ERATH	16	2,709	0.6	-	1.8	-	1.0
FALLS	8	1,513	0.5	-	-	-	-
FANNIN	12	2,523	0.5	-	-	0.4	-
FAYETTE	11	1,840	0.6	2.8	-	-	-
FISHER	-	354	-	-	-	-	-
FLOYD	5	950	0.5	-	0.9	-	-
FOARD	-	151	-	-	-	-	-
FORT BEND	143	40,507	0.4	0.4	0.8	0.2	0.5
FRANKLIN	-	767	-	-	-	-	-
FREESTONE	-	1,662	-	-	-	-	-
FRIO	8	1,390	0.6	-	0.7	-	-
GAINES	6	1,377	0.4	-	-	-	-
GALVESTON	226	32,405	0.7	1.0	1.2	0.5	0.9
GARZA	-	730	-	-	-	-	-
GILLESPIE	14	1,790	0.8	-	2.9	-	1.6
GLASSCOCK	-	156	-	-	-	-	-
GOLIAD	-	708	-	-	-	-	-
GONZALES	10	1,915	0.5	-	0.7	-	0.5
GRAY	23	1,956	1.2	-	2.0	0.8	1.1
GRAYSON	62	10,185	0.6	0.9	1.1	0.5	0.5
GREGG	81	11,454	0.7	0.9	0.6	0.6	0.6
GRIMES	5	2,012	0.2	-	-	-	-
GUADALUPE	75	8,482	0.9	0.8	1.6	0.4	1.1
HALE	39	3,751	1.0	-	1.3	0.5	0.4
HALL	-	362	-	-	-	-	-
HAMILTON	-	813	-	-	-	-	-
HANSFORD	-	572	-	-	-	-	-
HARDEMAN	-	401	-	-	-	-	-
HARDIN	23	5,173	0.4	-	-	0.4	0.5
HARRIS	3,676	300,191	1.2	1.3	1.9	0.4	1.4
HARRISON	39	6,296	0.6	1.5	-	0.3	0.6
HARTLEY	-	155	-	-	-	-	-
HASKELL	-	540	-	-	-	-	-
HAYS	54	10,063	0.5	-	0.7	0.4	0.6
HEMPHILL	-	531	-	-	-	-	-
HENDERSON	41	5,009	0.8	2.0	1.8	0.5	0.7
HIDALGO	752	66,866	1.1	-	1.2	0.4	0.9
HILL	14	2,975	0.5	-	0.9	0.2	0.4
HOCKLEY	13	2,374	0.5	-	0.9	-	0.7
HOOD	32	3,889	0.8	-	2.5	0.6	1.1
HOPKINS	-	3,028	-	-	-	-	-
HOUSTON	15	1,783	0.8	1.2	4.2	-	1.5
HOWARD	32	2,721	1.2	4.5	1.8	0.4	1.4
HUDSPETH	6	412	1.5	-	1.8	-	1.6
HUNT	73	7,363	1.0	2.6	2.4	0.5	1.4
HUTCHINSON	16	2,246	0.7	-	1.1	0.6	-
IRION	-	212	-	-	-	-	-
JACK	-	846	-	-	-	-	-
JACKSON	-	1,553	-	-	-	-	-

Note. A dash (-) indicates data are not reported to protect student anonymity.

Table 2
Annual Dropout Rates, Grades 7-12, by Student Group, Texas Public Schools, 2002-03: County Listing

County	All students			Rate by student group (%)			
	Dropouts	Total	Rate (%)	African American	Hispanic	White	Econ. dis.
JASPER	25	3,360	0.7	-	-	0.9	0.8
JEFF DAVIS	-	295	-	-	-	-	-
JEFFERSON	257	20,229	1.3	1.9	2.0	0.4	1.2
JIM HOGG	6	549	1.1	-	1.1	-	-
JIM WELLS	32	4,287	0.7	-	0.8	-	0.7
JOHNSON	58	12,932	0.4	-	0.5	0.4	0.4
JONES	-	1,426	-	-	-	-	-
KARNES	10	1,274	0.8	-	1.1	-	-
KAUFMAN	25	9,148	0.3	-	0.5	0.3	0.2
KENDALL	13	3,162	0.4	-	0.9	0.3	1.2
KENT	-	83	-	-	-	-	-
KERR	12	3,775	0.3	-	-	0.3	-
KIMBLE	-	388	-	-	-	-	-
KING	-	52	-	-	-	-	-
KINNEY	-	300	-	-	-	-	-
KLEBERG	47	2,961	1.6	-	1.7	0.8	1.2
KNOX	-	458	-	-	-	-	-
LA SALLE	6	603	1.0	-	1.2	-	-
LAMAR	12	4,176	0.3	-	-	0.2	0.6
LAMB	11	1,774	0.6	-	0.9	-	0.5
LAMPASAS	14	1,998	0.7	-	-	0.8	-
LAVACA	-	1,049	-	-	-	-	-
LEE	-	1,548	-	-	-	-	-
LEON	8	1,537	0.5	-	-	-	0.9
LIBERTY	60	6,960	0.9	0.6	1.3	0.8	1.1
LIMESTONE	7	2,058	0.3	-	-	-	-
LIPSCOMB	-	335	-	-	-	-	-
LIVE OAK	5	929	0.5	-	-	-	-
LLANO	6	880	0.7	-	-	-	-
LUBBOCK	184	19,903	0.9	1.2	1.4	0.5	0.7
LYNN	-	787	-	-	-	-	-
MADISON	-	1,153	-	-	-	-	-
MARION	-	783	-	-	-	-	-
MARTIN	-	517	-	-	-	-	-
MASON	-	331	-	-	-	-	-
MATAGORDA	22	3,847	0.6	-	1.3	-	0.7
MAVERICK	131	5,765	2.3	-	2.3	-	1.8
MCCULLOCH	-	877	-	-	-	-	-
MCLENNAN	145	18,951	0.8	1.2	1.2	0.4	0.6
MCMULLEN	-	92	-	-	-	-	-
MEDINA	19	4,327	0.4	-	0.6	-	0.3
MENARD	-	209	-	-	-	-	-
MIDLAND	108	11,885	0.9	1.7	1.1	0.6	1.0
MILAM	8	2,286	0.3	-	-	-	-
MILLS	-	547	-	-	-	-	-
MITCHELL	7	660	1.1	-	-	-	-
MONTAGUE	12	1,649	0.7	-	-	0.6	-
MONTGOMERY	184	30,931	0.6	0.9	1.1	0.5	0.9
MOORE	8	2,113	0.4	-	0.6	-	-
MORRIS	10	1,239	0.8	1.4	-	-	1.0
MOTLEY	-	86	-	-	-	-	-
NACOGDOCHES	34	4,886	0.7	0.6	2.1	0.3	1.0
NAVARRO	36	4,300	0.8	1.6	1.4	0.4	0.9
NEWTON	-	1,229	-	-	-	-	-
NOLAN	-	1,525	-	-	-	-	-
NUECES	202	28,947	0.7	1.1	0.8	0.3	0.7
OCHILTREE	9	927	1.0	-	1.5	-	-
OLDHAM	-	591	-	-	-	-	-
ORANGE	32	7,859	0.4	1.3	-	0.3	0.7
PALO PINTO	7	2,423	0.3	-	-	0.3	-

Note. A dash (-) indicates data are not reported to protect student anonymity.

Table 2
Annual Dropout Rates, Grades 7-12, by Student Group, Texas Public Schools, 2002-03: County Listing

County	All students			Rate by student group (%)			
	Dropouts	Total	Rate (%)	African American	Hispanic	White	Econ. dis.
PANOLA	24	1,905	1.3	1.4	5.0	1.0	1.6
PARKER	36	8,757	0.4	-	1.2	0.3	0.4
PARMER	5	1,112	0.4	-	-	-	-
PECOS	11	1,653	0.7	-	0.8	-	0.7
POLK	9	3,390	0.3	-	-	0.2	0.3
POTTER	70	14,314	0.5	0.7	0.5	0.5	0.4
PRESIDIO	17	904	1.9	-	2.0	-	1.9
RAINS	-	774	-	-	-	-	-
RANDALL	17	4,036	0.4	-	1.4	0.2	-
REAGAN	-	432	-	-	-	-	-
REAL	-	182	-	-	-	-	-
RED RIVER	-	1,273	-	-	-	-	-
REEVES	7	1,310	0.5	-	0.5	-	-
REFUGIO	5	736	0.7	-	-	-	-
ROBERTS	-	98	-	-	-	-	-
ROBERTSON	7	1,520	0.5	-	-	-	-
ROCKWALL	40	5,753	0.7	-	1.6	0.5	0.8
RUNNELS	8	1,172	0.7	-	1.1	-	-
RUSK	23	3,601	0.6	1.0	-	0.6	0.5
SABINE	-	782	-	-	-	-	-
SAN AUGUSTINE	-	720	-	-	-	-	-
SAN JACINTO	6	1,799	0.3	-	-	0.5	-
SAN PATRICIO	38	7,639	0.5	-	0.5	0.5	0.5
SAN SABA	-	534	-	-	-	-	-
SCHLEICHER	-	307	-	-	-	-	-
SCURRY	5	1,414	0.4	-	-	-	-
SHACKELFORD	-	338	-	-	-	-	-
SHELBY	15	2,244	0.7	1.2	-	-	0.6
SHERMAN	-	358	-	-	-	-	-
SMITH	121	15,087	0.8	1.3	1.4	0.4	0.8
SOMERVELL	-	961	-	-	-	-	-
STARR	173	6,609	2.6	-	2.6	-	2.1
STEPHENS	10	801	1.2	-	2.8	0.8	-
STERLING	-	170	-	-	-	-	-
STONEWALL	-	126	-	-	-	-	-
SUTTON	-	402	-	-	-	-	-
SWISHER	10	862	1.2	-	-	1.3	1.6
TARRANT	1,156	131,471	0.9	1.3	1.3	0.5	0.8
TAYLOR	55	10,925	0.5	0.6	0.8	0.4	0.6
TERRELL	-	115	-	-	-	-	-
TERRY	-	1,250	-	-	-	-	-
THROCKMORTON	-	186	-	-	-	-	-
TITUS	7	2,707	0.3	-	-	-	-
TOM GREEN	93	9,297	1.0	1.4	1.4	0.6	0.7
TRAVIS	616	54,308	1.1	1.5	1.7	0.5	1.2
TRINITY	-	1,182	-	-	-	-	-
TYLER	-	1,783	-	-	-	-	-
UPSHUR	17	3,307	0.5	1.8	-	0.3	0.8
UPTON	-	410	-	-	-	-	-
UVALDE	34	2,963	1.1	-	1.4	-	1.2
VAL VERDE	81	4,762	1.7	-	1.8	-	1.7
VAN ZANDT	20	5,104	0.4	-	-	0.4	-
VICTORIA	64	7,306	0.9	0.9	1.4	0.3	1.1
WALKER	10	4,100	0.2	-	-	0.2	-
WALLER	26	3,622	0.7	0.8	0.9	0.5	0.4
WARD	-	1,076	-	-	-	-	-
WASHINGTON	9	2,678	0.3	1.0	-	-	0.6
WEBB	227	22,077	1.0	-	1.0	-	0.9
WHARTON	-	4,082	-	-	-	-	-
WHEELER	-	463	-	-	-	-	-

Note. A dash (-) indicates data are not reported to protect student anonymity.

Table 2
Annual Dropout Rates, Grades 7-12, by Student Group, Texas Public Schools, 2002-03: County Listing

County	All students			Rate by student group (%)			
	Dropouts	Total	Rate (%)	African American	Hispanic	White	Econ. dis.
WICHITA	56	10,471	0.5	0.9	0.5	0.5	0.5
WILBARGER	6	1,542	0.4	-	-	-	-
WILLACY	30	2,250	1.3	-	1.4	-	1.1
WILLIAMSON	110	31,734	0.3	0.3	0.6	0.3	0.5
WILSON	19	3,595	0.5	-	0.7	0.4	0.6
WINKLER	-	783	-	-	-	-	-
WISE	18	4,349	0.4	-	-	0.4	-
WOOD	5	3,022	0.2	-	-	-	-
YOAKUM	6	865	0.7	-	0.9	-	-
YOUNG	-	1,718	-	-	-	-	-
ZAPATA	31	1,357	2.3	-	2.2	-	1.8
ZAVALA	23	1,162	2.0	-	1.9	-	2.1

Note. A dash (-) indicates data are not reported to protect student anonymity.

Table 3
Longitudinal Completion/Student Status Rates,
Grades 9-12, by Student Group, Texas Public Schools,
Class of 2003: County Listing

Table 3
 Longitudinal Completion/Student Status Rates, Grades 9-12, by Student Group, Texas Public
 Schools, Class of 2003: County Listing

County	Final status ^a	Number	Number in class	Rate (%)				
				All students	Afr. Am.	His- panic	White	Econ. dis.
ANDERSON	Completion I	523	546	95.8	94.9	97.7	95.8	95.4
	Completion II	530	546	97.1	94.9	97.7	97.5	95.4
	Graduated	503	546	92.1	88.8	88.6	93.3	88.7
	Continued HS	20	546	3.7	6.1	-	2.5	6.6
	Received GED	7	546	1.3	-	-	1.7	-
	Dropped Out	16	546	2.9	5.1	-	2.5	4.6
ANDREWS	Completion I	245	248	98.8	100.0	99.1	98.5	100.0
	Completion II	247	248	99.6	100.0	100.0	99.3	100.0
	Graduated	242	248	97.6	100.0	98.1	97.1	98.0
	Continued HS	-	248	-	-	-	-	-
	Received GED	-	248	-	-	-	-	-
	Dropped Out	-	248	-	-	-	-	-
ANGELINA	Completion I	1,025	1,077	95.2	96.2	91.1	95.9	94.8
	Completion II	1,042	1,077	96.8	96.2	92.9	97.8	96.2
	Graduated	938	1,077	87.1	85.6	81.0	89.3	82.6
	Continued HS	87	1,077	8.1	10.6	10.1	6.7	12.2
	Received GED	17	1,077	1.6	-	-	1.9	1.5
	Dropped Out	35	1,077	3.2	3.8	7.1	2.2	3.8
ARANSAS	Completion I	227	247	91.9	90.0	89.4	92.9	86.0
	Completion II	239	247	96.8	100.0	93.9	97.4	91.2
	Graduated	218	247	88.3	90.0	83.3	89.6	80.7
	Continued HS	9	247	3.6	-	-	3.2	-
	Received GED	12	247	4.9	-	-	4.5	-
	Dropped Out	8	247	3.2	-	-	-	8.8
ARCHER	Completion I	163	169	96.4	-	84.6	97.4	89.3
	Completion II	166	169	98.2	-	84.6	99.4	92.9
	Graduated	162	169	95.9	-	84.6	96.8	85.7
	Continued HS	-	169	-	-	-	-	-
	Received GED	-	169	-	-	-	-	-
	Dropped Out	-	169	-	-	-	-	-
ARMSTRONG	Completion I	26	26	100.0	-	-	100.0	-
	Completion II	26	26	100.0	-	-	100.0	-
	Graduated	26	26	100.0	-	-	100.0	-
	Continued HS	-	26	-	-	-	-	-
	Received GED	-	26	-	-	-	-	-
	Dropped Out	-	26	-	-	-	-	-
ATASCOSA	Completion I	535	561	95.4	-	94.0	97.6	92.2
	Completion II	545	561	97.1	-	96.0	99.0	94.7
	Graduated	509	561	90.7	-	88.9	93.7	87.2
	Continued HS	26	561	4.6	-	5.1	3.9	5.0
	Received GED	10	561	1.8	-	2.0	-	2.5
	Dropped Out	16	561	2.9	-	4.0	-	5.3
AUSTIN	Completion I	377	386	97.7	100.0	94.5	98.1	97.8
	Completion II	381	386	98.7	100.0	94.5	99.6	98.9
	Graduated	367	386	95.1	94.3	89.0	96.9	91.0
	Continued HS	10	386	2.6	-	-	-	6.7
	Received GED	-	386	-	-	-	-	-
	Dropped Out	5	386	1.3	-	-	-	-
BAILEY	Completion I	76	83	91.6	-	88.0	96.9	83.3
	Completion II	78	83	94.0	-	90.0	100.0	86.1
	Graduated	74	83	89.2	-	84.0	96.9	77.8
	Continued HS	-	83	-	-	-	-	-
	Received GED	-	83	-	-	-	-	-
	Dropped Out	5	83	6.0	-	10.0	-	13.9
BANDERA	Completion I	189	199	95.0	-	95.7	94.9	91.5
	Completion II	199	199	100.0	-	100.0	100.0	100.0
	Graduated	179	199	89.9	-	91.3	89.8	80.9
	Continued HS	10	199	5.0	-	-	5.1	10.6
	Received GED	10	199	5.0	-	-	5.1	-
	Dropped Out	-	199	-	-	-	-	-

Note. A dash (-) indicates data are not reported to protect student anonymity.

^aCompletion I consists of students who graduated or continued high school. Completion II consists of students who graduated, continued high school, or received GEDs.

Table 3
 Longitudinal Completion/Student Status Rates, Grades 9-12, by Student Group, Texas Public
 Schools, Class of 2003: County Listing

County	Final status ^a	Number	Number in class	Rate (%)				
				All students	Afr. Am.	His-panic	White	Econ. dis.
BASTROP	Completion I	696	750	92.8	89.3	88.1	95.3	88.5
	Completion II	706	750	94.1	90.5	89.6	96.6	90.0
	Graduated	648	750	86.4	81.0	76.2	91.6	76.6
	Continued HS	48	750	6.4	8.3	11.9	3.7	12.0
	Received GED	10	750	1.3	-	-	1.3	-
	Dropped Out	44	750	5.9	9.5	10.4	3.4	10.0
BAYLOR	Completion I	49	53	92.5	-	-	93.8	92.9
	Completion II	52	53	98.1	-	-	100.0	92.9
	Graduated	49	53	92.5	-	-	93.8	92.9
	Continued HS	-	53	-	-	-	-	-
	Received GED	-	53	-	-	-	-	-
	Dropped Out	-	53	-	-	-	-	-
BEE	Completion I	325	337	96.4	100.0	96.1	96.6	96.1
	Completion II	329	337	97.6	100.0	97.5	97.5	97.4
	Graduated	286	337	84.9	71.4	82.4	90.7	79.4
	Continued HS	39	337	11.6	-	13.7	5.9	16.8
	Received GED	-	337	-	-	-	-	-
	Dropped Out	8	337	2.4	-	2.5	-	-
BELL	Completion I	2,743	2,971	92.3	91.4	92.4	92.4	88.8
	Completion II	2,858	2,971	96.2	94.1	95.8	97.3	94.0
	Graduated	2,581	2,971	86.9	83.9	84.1	89.0	78.9
	Continued HS	162	2,971	5.5	7.5	8.3	3.5	9.9
	Received GED	115	2,971	3.9	2.7	3.4	4.9	5.1
	Dropped Out	113	2,971	3.8	5.9	4.2	2.7	6.0
BEXAR	Completion I	16,018	17,601	91.0	93.3	89.7	92.7	90.1
	Completion II	16,632	17,601	94.5	95.1	93.1	97.0	93.0
	Graduated	14,347	17,601	81.5	82.2	78.2	87.5	78.3
	Continued HS	1,671	17,601	9.5	11.1	11.5	5.1	11.8
	Received GED	614	17,601	3.5	1.8	3.4	4.4	2.9
	Dropped Out	969	17,601	5.5	4.9	6.9	3.0	7.0
BLANCO	Completion I	106	109	97.2	-	96.9	97.4	100.0
	Completion II	108	109	99.1	-	96.9	100.0	100.0
	Graduated	104	109	95.4	-	96.9	94.7	95.5
	Continued HS	-	109	-	-	-	-	-
	Received GED	-	109	-	-	-	-	-
	Dropped Out	-	109	-	-	-	-	-
BORDEN	Completion I	19	19	100.0	-	100.0	100.0	100.0
	Completion II	19	19	100.0	-	100.0	100.0	100.0
	Graduated	19	19	100.0	-	100.0	100.0	100.0
	Continued HS	-	19	-	-	-	-	-
	Received GED	-	19	-	-	-	-	-
	Dropped Out	-	19	-	-	-	-	-
BOSQUE	Completion I	209	220	95.0	100.0	88.9	95.7	94.6
	Completion II	214	220	97.3	100.0	88.9	98.4	94.6
	Graduated	205	220	93.2	100.0	85.2	94.0	90.5
	Continued HS	-	220	-	-	-	-	-
	Received GED	5	220	2.3	-	-	2.7	-
	Dropped Out	6	220	2.7	-	-	-	-
BOWIE	Completion I	1,028	1,100	93.5	92.9	78.8	94.4	90.7
	Completion II	1,067	1,100	97.0	94.9	100.0	97.9	96.7
	Graduated	998	1,100	90.7	89.1	75.8	92.1	86.4
	Continued HS	30	1,100	2.7	3.8	-	2.3	4.2
	Received GED	39	1,100	3.5	1.9	21.2	3.5	6.0
	Dropped Out	33	1,100	3.0	5.1	-	2.1	3.3
BRAZORIA	Completion I	2,816	3,032	92.9	94.7	92.1	92.7	91.0
	Completion II	2,994	3,032	98.7	98.9	98.6	98.7	99.0
	Graduated	2,579	3,032	85.1	87.9	76.9	87.3	76.4
	Continued HS	237	3,032	7.8	6.8	15.2	5.4	14.6
	Received GED	178	3,032	5.9	4.2	6.5	6.0	8.0
	Dropped Out	38	3,032	1.3	-	1.4	1.3	1.0

Note. A dash (-) indicates data are not reported to protect student anonymity.

^aCompletion I consists of students who graduated or continued high school. Completion II consists of students who graduated, continued high school, or received GEDs.

Table 3
 Longitudinal Completion/Student Status Rates, Grades 9-12, by Student Group, Texas Public
 Schools, Class of 2003: County Listing

County	Final status ^a	Number	Number in class	Rate (%)				
				All students	Afr. Am.	His- panic	White	Econ. dis.
BRAZOS	Completion I	1,216	1,359	89.5	82.8	81.1	94.1	80.4
	Completion II	1,303	1,359	95.9	90.7	91.6	98.9	91.8
	Graduated	1,142	1,359	84.0	73.5	69.6	91.7	70.6
	Continued HS	74	1,359	5.4	9.3	11.5	2.3	9.8
	Received GED	87	1,359	6.4	7.9	10.5	4.8	11.3
	Dropped Out	56	1,359	4.1	9.3	8.4	1.1	8.2
BREWSTER	Completion I	92	94	97.9	-	98.5	96.4	100.0
	Completion II	93	94	98.9	-	98.5	100.0	100.0
	Graduated	79	94	84.0	-	81.8	89.3	77.8
	Continued HS	13	94	13.8	-	16.7	-	22.2
	Received GED	-	94	-	-	-	-	-
	Dropped Out	-	94	-	-	-	-	-
BRISCOE	Completion I	14	14	100.0	-	-	100.0	100.0
	Completion II	14	14	100.0	-	-	100.0	100.0
	Graduated	14	14	100.0	-	-	100.0	100.0
	Continued HS	-	14	-	-	-	-	-
	Received GED	-	14	-	-	-	-	-
	Dropped Out	-	14	-	-	-	-	-
BROOKS	Completion I	113	116	97.4	-	97.1	100.0	98.7
	Completion II	115	116	99.1	-	99.0	100.0	98.7
	Graduated	108	116	93.1	-	93.3	90.9	92.3
	Continued HS	5	116	4.3	-	-	-	6.4
	Received GED	-	116	-	-	-	-	-
	Dropped Out	-	116	-	-	-	-	-
BROWN	Completion I	440	471	93.4	92.5	90.1	94.5	91.0
	Completion II	464	471	98.5	95.0	97.5	99.1	97.7
	Graduated	416	471	88.3	87.5	80.2	90.5	82.7
	Continued HS	24	471	5.1	-	9.9	4.0	8.3
	Received GED	24	471	5.1	-	7.4	4.6	6.8
	Dropped Out	7	471	1.5	-	-	-	-
BURLESON	Completion I	197	220	89.5	95.1	86.8	88.7	87.9
	Completion II	206	220	93.6	97.6	92.1	92.9	90.9
	Graduated	185	220	84.1	90.2	81.6	83.0	78.8
	Continued HS	12	220	5.5	-	-	5.7	9.1
	Received GED	9	220	4.1	-	-	4.3	-
	Dropped Out	14	220	6.4	-	-	7.1	9.1
BURNET	Completion I	424	442	95.9	90.9	93.9	96.5	95.5
	Completion II	431	442	97.5	90.9	93.9	98.6	96.4
	Graduated	388	442	87.8	63.6	82.9	89.6	78.6
	Continued HS	36	442	8.1	-	11.0	6.9	17.0
	Received GED	7	442	1.6	-	-	2.0	-
	Dropped Out	11	442	2.5	-	6.1	1.4	-
CALDWELL	Completion I	405	438	92.5	93.3	89.7	94.4	88.2
	Completion II	415	438	94.7	100.0	91.4	96.5	90.8
	Graduated	376	438	85.8	80.0	81.1	90.0	79.6
	Continued HS	29	438	6.6	-	8.6	4.3	8.6
	Received GED	10	438	2.3	-	-	2.2	-
	Dropped Out	23	438	5.3	-	8.6	3.5	9.2
CALHOUN	Completion I	232	238	97.5	100.0	97.9	96.8	98.4
	Completion II	236	238	99.2	100.0	97.9	100.0	98.4
	Graduated	214	238	89.9	100.0	92.6	86.4	88.7
	Continued HS	18	238	7.6	-	5.3	10.4	9.7
	Received GED	-	238	-	-	-	-	-
	Dropped Out	-	238	-	-	-	-	-
CALLAHAN	Completion I	206	219	94.1	-	94.4	94.0	88.5
	Completion II	212	219	96.8	-	100.0	96.5	93.4
	Graduated	198	219	90.4	-	88.9	91.0	78.7
	Continued HS	8	219	3.7	-	-	3.0	9.8
	Received GED	6	219	2.7	-	-	2.5	-
	Dropped Out	7	219	3.2	-	-	3.5	-

Note. A dash (-) indicates data are not reported to protect student anonymity.

^aCompletion I consists of students who graduated or continued high school. Completion II consists of students who graduated, continued high school, or received GEDs.

Table 3
 Longitudinal Completion/Student Status Rates, Grades 9-12, by Student Group, Texas Public
 Schools, Class of 2003: County Listing

County	Final status ^a	Number	Number in class	Rate (%)				
				All students	Afr. Am.	His-panic	White	Econ. dis.
CAMERON	Completion I	4,777	5,126	93.2	83.3	93.1	93.6	93.5
	Completion II	4,893	5,126	95.5	100.0	95.1	99.3	95.3
	Graduated	4,144	5,126	80.8	77.8	79.9	89.3	79.9
	Continued HS	633	5,126	12.3	-	13.2	4.3	13.6
	Received GED	116	5,126	2.3	-	1.9	5.7	1.8
	Dropped Out	233	5,126	4.5	-	4.9	-	4.7
CAMP	Completion I	130	145	89.7	100.0	94.7	83.7	91.5
	Completion II	142	145	97.9	100.0	100.0	96.5	98.3
	Graduated	127	145	87.6	97.5	89.5	82.6	86.4
	Continued HS	-	145	-	-	-	-	-
	Received GED	12	145	8.3	-	-	12.8	-
	Dropped Out	-	145	-	-	-	-	-
CARSON	Completion I	88	93	94.6	-	-	94.4	80.0
	Completion II	91	93	97.8	-	-	97.8	90.0
	Graduated	87	93	93.5	-	-	93.3	80.0
	Continued HS	-	93	-	-	-	-	-
	Received GED	-	93	-	-	-	-	-
	Dropped Out	-	93	-	-	-	-	-
CASS	Completion I	451	469	96.2	99.1	100.0	95.1	96.1
	Completion II	467	469	99.6	100.0	100.0	99.4	99.4
	Graduated	444	469	94.7	98.2	-	93.7	93.9
	Continued HS	7	469	1.5	-	-	1.4	-
	Received GED	16	469	3.4	-	-	4.3	3.3
	Dropped Out	-	469	-	-	-	-	-
CASTRO	Completion I	126	149	84.6	-	78.7	94.7	79.7
	Completion II	130	149	87.2	-	82.0	96.5	86.4
	Graduated	121	149	81.2	-	73.0	94.7	74.6
	Continued HS	5	149	3.4	-	5.6	-	-
	Received GED	-	149	-	-	-	-	-
	Dropped Out	19	149	12.8	-	18.0	-	13.6
CHAMBERS	Completion I	343	355	96.6	96.2	100.0	96.1	100.0
	Completion II	350	355	98.6	100.0	100.0	98.2	100.0
	Graduated	335	355	94.4	96.2	97.3	94.0	96.0
	Continued HS	8	355	2.3	-	-	2.1	-
	Received GED	7	355	2.0	-	-	2.1	-
	Dropped Out	5	355	1.4	-	-	1.8	-
CHEROKEE	Completion I	440	462	95.2	99.0	98.7	92.9	95.5
	Completion II	456	462	98.7	99.0	98.7	98.6	97.2
	Graduated	419	462	90.7	95.0	88.0	89.8	88.3
	Continued HS	21	462	4.5	-	10.7	3.2	7.3
	Received GED	16	462	3.5	-	-	5.7	-
	Dropped Out	6	462	1.3	-	-	-	2.8
CHILDRESS	Completion I	79	84	94.0	-	88.9	96.1	96.0
	Completion II	81	84	96.4	-	92.6	98.0	96.0
	Graduated	79	84	94.0	-	88.9	96.1	96.0
	Continued HS	-	84	-	-	-	-	-
	Received GED	-	84	-	-	-	-	-
	Dropped Out	-	84	-	-	-	-	-
CLAY	Completion I	139	141	98.6	-	100.0	98.5	93.3
	Completion II	140	141	99.3	-	100.0	99.2	100.0
	Graduated	138	141	97.9	-	100.0	97.7	93.3
	Continued HS	-	141	-	-	-	-	-
	Received GED	-	141	-	-	-	-	-
	Dropped Out	-	141	-	-	-	-	-
COCHRAN	Completion I	89	95	93.7	-	89.1	100.0	89.5
	Completion II	90	95	94.7	-	90.9	100.0	91.2
	Graduated	87	95	91.6	-	85.5	100.0	89.5
	Continued HS	-	95	-	-	-	-	-
	Received GED	-	95	-	-	-	-	-
	Dropped Out	5	95	5.3	-	9.1	-	8.8

Note. A dash (-) indicates data are not reported to protect student anonymity.
^aCompletion I consists of students who graduated or continued high school. Completion II consists of students who graduated, continued high school, or received GEDs.

Table 3
 Longitudinal Completion/Student Status Rates, Grades 9-12, by Student Group, Texas Public
 Schools, Class of 2003: County Listing

County	Final status ^a	Number	Number in class	Rate (%)				
				All students	Afr. Am.	His- panic	White	Econ. dis.
COKE	Completion I	76	151	50.3	51.9	22.2	65.4	40.7
	Completion II	150	151	99.3	100.0	97.8	100.0	98.9
	Graduated	54	151	35.8	-	11.1	59.0	19.8
	Continued HS	22	151	14.6	44.4	11.1	6.4	20.9
	Received GED	74	151	49.0	48.1	75.6	34.6	58.2
	Dropped Out	-	151	-	-	-	-	-
COLEMAN	Completion I	124	132	93.9	100.0	89.3	94.8	92.7
	Completion II	124	132	93.9	100.0	89.3	94.8	92.7
	Graduated	119	132	90.2	83.3	85.7	91.8	82.9
	Continued HS	5	132	3.8	-	-	-	-
	Received GED	-	132	-	-	-	-	-
	Dropped Out	8	132	6.1	-	-	5.2	-
COLLIN	Completion I	5,792	6,125	94.6	94.1	89.6	94.9	89.3
	Completion II	6,052	6,125	98.8	97.8	95.6	99.2	95.5
	Graduated	5,557	6,125	90.7	83.8	78.2	92.6	77.7
	Continued HS	235	6,125	3.8	10.3	11.4	2.3	11.6
	Received GED	260	6,125	4.2	3.7	6.0	4.3	6.1
	Dropped Out	73	6,125	1.2	2.2	4.4	0.8	4.5
COLLINGSWORTH	Completion I	46	47	97.9	-	100.0	100.0	95.5
	Completion II	46	47	97.9	-	100.0	100.0	95.5
	Graduated	45	47	95.7	-	94.1	100.0	90.9
	Continued HS	-	47	-	-	-	-	-
	Received GED	-	47	-	-	-	-	-
	Dropped Out	-	47	-	-	-	-	-
COLORADO	Completion I	271	296	91.6	86.4	88.9	93.7	88.6
	Completion II	289	296	97.6	93.2	96.8	98.9	97.7
	Graduated	259	296	87.5	81.8	79.4	91.5	80.7
	Continued HS	12	296	4.1	-	9.5	-	8.0
	Received GED	18	296	6.1	-	7.9	5.3	9.1
	Dropped Out	7	296	2.4	-	-	-	-
COMAL	Completion I	1,173	1,301	90.2	100.0	85.0	91.7	77.8
	Completion II	1,229	1,301	94.5	100.0	90.8	95.6	84.4
	Graduated	1,088	1,301	83.6	100.0	73.6	86.8	66.7
	Continued HS	85	1,301	6.5	-	11.3	4.9	11.1
	Received GED	56	1,301	4.3	-	5.8	3.9	6.7
	Dropped Out	72	1,301	5.5	-	9.2	4.4	15.6
COMANCHE	Completion I	171	186	91.9	-	88.1	93.6	93.3
	Completion II	174	186	93.5	-	88.1	95.0	95.0
	Graduated	166	186	89.2	-	78.6	92.9	86.7
	Continued HS	5	186	2.7	-	-	-	-
	Received GED	-	186	-	-	-	-	-
	Dropped Out	12	186	6.5	-	11.9	5.0	-
CONCHO	Completion I	28	29	96.6	-	94.1	100.0	100.0
	Completion II	28	29	96.6	-	94.1	100.0	100.0
	Graduated	27	29	93.1	-	88.2	100.0	93.3
	Continued HS	-	29	-	-	-	-	-
	Received GED	-	29	-	-	-	-	-
	Dropped Out	-	29	-	-	-	-	-
COOKE	Completion I	361	386	93.5	94.1	100.0	92.9	81.7
	Completion II	379	386	98.2	94.1	100.0	98.1	93.3
	Graduated	354	386	91.7	94.1	87.5	92.6	76.7
	Continued HS	7	386	1.8	-	12.5	-	-
	Received GED	18	386	4.7	-	-	5.3	11.7
	Dropped Out	7	386	1.8	-	-	1.9	-
CORYELL	Completion I	666	716	93.0	91.7	90.0	94.0	85.6
	Completion II	688	716	96.1	93.2	93.3	97.6	89.6
	Graduated	612	716	85.5	82.7	86.7	86.5	73.6
	Continued HS	54	716	7.5	9.0	-	7.5	12.0
	Received GED	22	716	3.1	-	-	3.6	4.0
	Dropped Out	28	716	3.9	6.8	6.7	2.4	10.4

Note. A dash (-) indicates data are not reported to protect student anonymity.

^aCompletion I consists of students who graduated or continued high school. Completion II consists of students who graduated, continued high school, or received GEDs.

Table 3
 Longitudinal Completion/Student Status Rates, Grades 9-12, by Student Group, Texas Public
 Schools, Class of 2003: County Listing

County	Final status ^a	Number	Number in class	Rate (%)				
				All students	Afr. Am.	Hispanic	White	Econ. dis.
COTTLE	Completion I	29	30	96.7	100.0	-	94.4	100.0
	Completion II	29	30	96.7	100.0	-	94.4	100.0
	Graduated	29	30	96.7	100.0	-	94.4	100.0
	Continued HS	-	30	-	-	-	-	-
	Received GED	-	30	-	-	-	-	-
	Dropped Out	-	30	-	-	-	-	-
CRANE	Completion I	78	80	97.5	-	96.2	100.0	100.0
	Completion II	78	80	97.5	-	96.2	100.0	100.0
	Graduated	71	80	88.8	-	84.9	95.8	87.0
	Continued HS	7	80	8.8	-	11.3	-	-
	Received GED	-	80	-	-	-	-	-
	Dropped Out	-	80	-	-	-	-	-
CROCKETT	Completion I	68	68	100.0	-	100.0	100.0	100.0
	Completion II	68	68	100.0	-	100.0	100.0	100.0
	Graduated	68	68	100.0	-	100.0	100.0	100.0
	Continued HS	-	68	-	-	-	-	-
	Received GED	-	68	-	-	-	-	-
	Dropped Out	-	68	-	-	-	-	-
CROSBY	Completion I	101	103	98.1	100.0	98.3	97.4	96.6
	Completion II	103	103	100.0	100.0	100.0	100.0	100.0
	Graduated	96	103	93.2	-	91.5	97.4	89.8
	Continued HS	5	103	4.9	-	-	-	-
	Received GED	-	103	-	-	-	-	-
	Dropped Out	-	103	-	-	-	-	-
CULBERSON	Completion I	47	49	95.9	-	97.5	88.9	94.6
	Completion II	48	49	98.0	-	100.0	88.9	97.3
	Graduated	47	49	95.9	-	97.5	88.9	94.6
	Continued HS	-	49	-	-	-	-	-
	Received GED	-	49	-	-	-	-	-
	Dropped Out	-	49	-	-	-	-	-
DALLAM	Completion I	97	103	94.2	-	90.9	94.9	93.1
	Completion II	99	103	96.1	-	95.5	96.2	96.6
	Graduated	97	103	94.2	-	90.9	94.9	93.1
	Continued HS	-	103	-	-	-	-	-
	Received GED	-	103	-	-	-	-	-
	Dropped Out	-	103	-	-	-	-	-
DALLAS	Completion I	22,153	23,781	93.2	93.3	91.5	93.8	92.2
	Completion II	22,798	23,781	95.9	94.6	94.1	97.8	94.3
	Graduated	19,726	23,781	82.9	82.3	75.0	88.6	78.9
	Continued HS	2,427	23,781	10.2	11.0	16.5	5.2	13.3
	Received GED	645	23,781	2.7	1.3	2.6	4.0	2.1
	Dropped Out	983	23,781	4.1	5.4	5.9	2.2	5.7
DAWSON	Completion I	210	229	91.7	-	89.9	95.3	88.0
	Completion II	220	229	96.1	-	94.9	98.8	94.0
	Graduated	203	229	88.6	-	84.8	95.3	81.9
	Continued HS	7	229	3.1	-	5.1	-	6.0
	Received GED	10	229	4.4	-	5.1	-	6.0
	Dropped Out	9	229	3.9	-	5.1	-	6.0
DEAF SMITH	Completion I	269	307	87.6	100.0	84.4	93.6	79.8
	Completion II	281	307	91.5	100.0	88.8	96.8	84.5
	Graduated	260	307	84.7	100.0	80.0	93.6	75.2
	Continued HS	9	307	2.9	-	4.4	-	4.7
	Received GED	12	307	3.9	-	4.4	-	4.7
	Dropped Out	26	307	8.5	-	11.2	-	15.5
DELTA	Completion I	70	70	100.0	100.0	-	100.0	100.0
	Completion II	70	70	100.0	100.0	-	100.0	100.0
	Graduated	67	70	95.7	100.0	-	96.3	90.3
	Continued HS	-	70	-	-	-	-	-
	Received GED	-	70	-	-	-	-	-
	Dropped Out	-	70	-	-	-	-	-

Note. A dash (-) indicates data are not reported to protect student anonymity.
^aCompletion I consists of students who graduated or continued high school. Completion II consists of students who graduated, continued high school, or received GEDs.

Table 3
 Longitudinal Completion/Student Status Rates, Grades 9-12, by Student Group, Texas Public
 Schools, Class of 2003: County Listing

County	Final status ^a	Number	Number in class	Rate (%)				
				All students	Afr. Am.	His- panic	White	Econ. dis.
DENTON	Completion I	4,495	4,773	94.2	93.8	89.9	94.7	88.6
	Completion II	4,677	4,773	98.0	96.0	94.3	98.7	93.8
	Graduated	4,270	4,773	89.5	84.4	76.7	91.8	74.0
	Continued HS	225	4,773	4.7	9.3	13.3	3.0	14.6
	Received GED	182	4,773	3.8	2.3	4.3	4.0	5.2
	Dropped Out	96	4,773	2.0	4.0	5.7	1.3	6.2
DEWITT	Completion I	364	389	93.6	92.1	92.1	94.6	90.8
	Completion II	378	389	97.2	94.7	96.0	98.2	94.9
	Graduated	337	389	86.6	81.6	77.8	92.4	78.6
	Continued HS	27	389	6.9	-	14.3	2.2	12.2
	Received GED	14	389	3.6	-	4.0	3.6	-
	Dropped Out	11	389	2.8	-	4.0	-	5.1
DICKENS	Completion I	29	29	100.0	-	100.0	100.0	100.0
	Completion II	29	29	100.0	-	100.0	100.0	100.0
	Graduated	28	29	96.6	-	100.0	94.7	100.0
	Continued HS	-	29	-	-	-	-	-
	Received GED	-	29	-	-	-	-	-
	Dropped Out	-	29	-	-	-	-	-
DIMMIT	Completion I	148	169	87.6	-	87.3	87.5	92.8
	Completion II	154	169	91.1	-	91.3	87.5	95.5
	Graduated	143	169	84.6	-	84.0	87.5	90.1
	Continued HS	5	169	3.0	-	3.3	-	-
	Received GED	6	169	3.6	-	4.0	-	-
	Dropped Out	15	169	8.9	-	8.7	-	4.5
DONLEY	Completion I	53	54	98.1	100.0	100.0	97.5	100.0
	Completion II	53	54	98.1	100.0	100.0	97.5	100.0
	Graduated	52	54	96.3	100.0	100.0	95.0	94.7
	Continued HS	-	54	-	-	-	-	-
	Received GED	-	54	-	-	-	-	-
	Dropped Out	-	54	-	-	-	-	-
DUVAL	Completion I	157	170	92.4	-	92.3	92.9	91.9
	Completion II	163	170	95.9	-	95.5	100.0	94.3
	Graduated	155	170	91.2	-	91.0	92.9	90.2
	Continued HS	-	170	-	-	-	-	-
	Received GED	6	170	3.5	-	3.2	-	-
	Dropped Out	7	170	4.1	-	4.5	-	5.7
EASTLAND	Completion I	244	270	90.4	62.5	88.9	92.1	80.2
	Completion II	264	270	97.8	100.0	95.6	98.1	94.8
	Graduated	224	270	83.0	-	68.9	87.9	63.5
	Continued HS	20	270	7.4	-	20.0	4.2	16.7
	Received GED	20	270	7.4	-	-	6.0	14.6
	Dropped Out	6	270	2.2	-	-	-	5.2
ECTOR	Completion I	1,549	1,782	86.9	87.9	84.3	89.5	84.1
	Completion II	1,595	1,782	89.5	89.9	86.4	92.7	86.3
	Graduated	1,322	1,782	74.2	65.7	69.1	80.3	66.8
	Continued HS	227	1,782	12.7	22.2	15.2	9.2	17.4
	Received GED	46	1,782	2.6	-	2.1	3.2	2.1
	Dropped Out	187	1,782	10.5	10.1	13.6	7.3	13.7
EDWARDS	Completion I	53	56	94.6	-	93.3	96.2	93.2
	Completion II	54	56	96.4	-	93.3	100.0	95.5
	Graduated	53	56	94.6	-	93.3	96.2	93.2
	Continued HS	-	56	-	-	-	-	-
	Received GED	-	56	-	-	-	-	-
	Dropped Out	-	56	-	-	-	-	-
EL PASO	Completion I	9,586	10,346	92.7	93.8	92.6	93.3	93.0
	Completion II	9,817	10,346	94.9	96.2	94.7	96.2	94.9
	Graduated	8,183	10,346	79.1	83.0	77.7	87.8	78.4
	Continued HS	1,403	10,346	13.6	10.7	14.9	5.5	14.6
	Received GED	231	10,346	2.2	2.4	2.1	2.9	1.9
	Dropped Out	529	10,346	5.1	3.8	5.3	3.8	5.1

Note. A dash (-) indicates data are not reported to protect student anonymity.

^aCompletion I consists of students who graduated or continued high school. Completion II consists of students who graduated, continued high school, or received GEDs.

Table 3
 Longitudinal Completion/Student Status Rates, Grades 9-12, by Student Group, Texas Public
 Schools, Class of 2003: County Listing

County	Final status ^a	Number	Number in class	Rate (%)				
				All students	Afr. Am.	Hispanic	White	Econ. dis.
ELLIS	Completion I	1,637	1,723	95.0	95.5	92.0	95.8	91.1
	Completion II	1,680	1,723	97.5	95.5	94.2	98.7	94.2
	Graduated	1,574	1,723	91.4	91.6	84.3	93.2	85.0
	Continued HS	63	1,723	3.7	3.9	7.7	2.6	6.1
	Received GED	43	1,723	2.5	-	2.2	2.9	3.2
	Dropped Out	43	1,723	2.5	4.5	5.8	1.3	5.8
ERATH	Completion I	305	320	95.3	100.0	92.3	96.0	88.7
	Completion II	310	320	96.9	100.0	93.8	97.6	90.1
	Graduated	294	320	91.9	100.0	83.1	94.0	77.5
	Continued HS	11	320	3.4	-	9.2	2.0	11.3
	Received GED	5	320	1.6	-	-	-	-
	Dropped Out	10	320	3.1	-	-	2.4	9.9
FALLS	Completion I	191	205	93.2	92.2	90.6	94.4	88.5
	Completion II	194	205	94.6	93.8	90.6	96.3	91.0
	Graduated	184	205	89.8	89.1	78.1	93.5	83.3
	Continued HS	7	205	3.4	-	-	-	-
	Received GED	-	205	-	-	-	-	-
	Dropped Out	11	205	5.4	-	-	-	9.0
FANNIN	Completion I	311	322	96.6	94.7	94.1	96.8	95.7
	Completion II	314	322	97.5	94.7	94.1	97.9	95.7
	Graduated	299	322	92.9	94.7	88.2	92.9	87.1
	Continued HS	12	322	3.7	-	-	3.9	8.6
	Received GED	-	322	-	-	-	-	-
	Dropped Out	8	322	2.5	-	-	2.1	-
FAYETTE	Completion I	275	294	93.5	91.7	86.1	94.8	92.0
	Completion II	286	294	97.3	91.7	94.4	98.3	98.0
	Graduated	262	294	89.1	83.3	75.0	91.7	86.0
	Continued HS	13	294	4.4	-	-	3.0	-
	Received GED	11	294	3.7	-	-	3.5	-
	Dropped Out	8	294	2.7	-	-	-	-
FISHER	Completion I	51	51	100.0	-	100.0	100.0	100.0
	Completion II	51	51	100.0	-	100.0	100.0	100.0
	Graduated	50	51	98.0	-	95.0	100.0	95.2
	Continued HS	-	51	-	-	-	-	-
	Received GED	-	51	-	-	-	-	-
	Dropped Out	-	51	-	-	-	-	-
FLOYD	Completion I	114	120	95.0	-	91.9	98.1	90.5
	Completion II	115	120	95.8	-	91.9	100.0	90.5
	Graduated	108	120	90.0	-	85.5	94.4	81.0
	Continued HS	6	120	5.0	-	-	-	-
	Received GED	-	120	-	-	-	-	-
	Dropped Out	5	120	4.2	-	8.1	-	-
FOARD	Completion I	30	30	100.0	-	100.0	100.0	100.0
	Completion II	30	30	100.0	-	100.0	100.0	100.0
	Graduated	29	30	96.7	-	90.0	100.0	93.8
	Continued HS	-	30	-	-	-	-	-
	Received GED	-	30	-	-	-	-	-
	Dropped Out	-	30	-	-	-	-	-
FORT BEND	Completion I	5,263	5,534	95.1	96.6	90.3	95.4	91.6
	Completion II	5,409	5,534	97.7	97.6	94.7	98.7	95.2
	Graduated	4,928	5,534	89.0	89.3	77.7	92.3	79.0
	Continued HS	335	5,534	6.1	7.3	12.5	3.1	12.7
	Received GED	146	5,534	2.6	1.0	4.5	3.3	3.6
	Dropped Out	125	5,534	2.3	2.4	5.3	1.3	4.8
FRANKLIN	Completion I	98	101	97.0	87.5	100.0	97.6	100.0
	Completion II	100	101	99.0	87.5	100.0	100.0	100.0
	Graduated	95	101	94.1	75.0	100.0	95.1	90.9
	Continued HS	-	101	-	-	-	-	-
	Received GED	-	101	-	-	-	-	-
	Dropped Out	-	101	-	-	-	-	-

Note. A dash (-) indicates data are not reported to protect student anonymity.
^aCompletion I consists of students who graduated or continued high school. Completion II consists of students who graduated, continued high school, or received GEDs.

Table 3
 Longitudinal Completion/Student Status Rates, Grades 9-12, by Student Group, Texas Public
 Schools, Class of 2003: County Listing

County	Final status ^a	Number	Number in class	Rate (%)				
				All students	Afr. Am.	His- panic	White	Econ. dis.
FREESTONE	Completion I	222	229	96.9	100.0	85.7	96.9	96.9
	Completion II	225	229	98.3	100.0	85.7	98.8	96.9
	Graduated	213	229	93.0	95.9	78.6	93.2	95.3
	Continued HS	9	229	3.9	-	-	3.7	-
	Received GED	-	229	-	-	-	-	-
	Dropped Out	-	229	-	-	-	-	-
FRIO	Completion I	176	195	90.3	-	89.6	93.5	89.0
	Completion II	184	195	94.4	-	93.3	100.0	92.9
	Graduated	164	195	84.1	-	82.3	93.5	81.1
	Continued HS	12	195	6.2	-	7.3	-	7.9
	Received GED	8	195	4.1	-	3.7	-	3.9
	Dropped Out	11	195	5.6	-	6.7	-	7.1
GAINES	Completion I	191	212	90.1	88.9	89.7	90.5	86.5
	Completion II	203	212	95.8	88.9	95.9	96.2	94.4
	Graduated	185	212	87.3	88.9	83.5	90.5	82.0
	Continued HS	6	212	2.8	-	6.2	-	-
	Received GED	12	212	5.7	-	6.2	5.7	7.9
	Dropped Out	9	212	4.2	-	-	-	5.6
GALVESTON	Completion I	4,021	4,371	92.0	93.9	89.5	91.8	88.2
	Completion II	4,204	4,371	96.2	95.8	93.0	97.0	92.3
	Graduated	3,718	4,371	85.1	81.4	76.1	87.4	73.3
	Continued HS	303	4,371	6.9	12.6	13.4	4.4	14.9
	Received GED	183	4,371	4.2	1.8	3.5	5.2	4.1
	Dropped Out	167	4,371	3.8	4.2	7.0	3.0	7.7
GARZA	Completion I	74	82	90.2	75.0	86.1	97.4	87.5
	Completion II	79	82	96.3	87.5	94.4	100.0	93.8
	Graduated	73	82	89.0	75.0	83.3	97.4	87.5
	Continued HS	-	82	-	-	-	-	-
	Received GED	5	82	6.1	-	-	-	-
	Dropped Out	-	82	-	-	-	-	-
GILLESPIE	Completion I	315	324	97.2	-	97.3	97.1	90.9
	Completion II	324	324	100.0	-	100.0	100.0	100.0
	Graduated	309	324	95.4	-	93.3	95.8	87.3
	Continued HS	6	324	1.9	-	-	-	-
	Received GED	9	324	2.8	-	-	2.9	9.1
	Dropped Out	-	324	-	-	-	-	-
GLASSCOCK	Completion I	30	30	100.0	-	100.0	100.0	100.0
	Completion II	30	30	100.0	-	100.0	100.0	100.0
	Graduated	29	30	96.7	-	90.0	100.0	90.0
	Continued HS	-	30	-	-	-	-	-
	Received GED	-	30	-	-	-	-	-
	Dropped Out	-	30	-	-	-	-	-
GOLIAD	Completion I	97	98	99.0	-	100.0	98.4	100.0
	Completion II	97	98	99.0	-	100.0	98.4	100.0
	Graduated	97	98	99.0	-	100.0	98.4	100.0
	Continued HS	-	98	-	-	-	-	-
	Received GED	-	98	-	-	-	-	-
	Dropped Out	-	98	-	-	-	-	-
GONZALES	Completion I	244	259	94.2	91.3	97.7	90.6	93.3
	Completion II	256	259	98.8	95.7	100.0	98.1	100.0
	Graduated	232	259	89.6	91.3	90.8	87.7	86.7
	Continued HS	12	259	4.6	-	6.9	-	6.7
	Received GED	12	259	4.6	-	-	7.5	6.7
	Dropped Out	-	259	-	-	-	-	-
GRAY	Completion I	282	316	89.2	70.0	82.2	91.7	82.6
	Completion II	298	316	94.3	80.0	91.1	95.7	88.4
	Graduated	263	316	83.2	-	77.8	86.2	67.4
	Continued HS	19	316	6.0	-	-	5.5	15.1
	Received GED	16	316	5.1	-	-	4.0	5.8
	Dropped Out	18	316	5.7	-	-	4.3	11.6

Note. A dash (-) indicates data are not reported to protect student anonymity.

^aCompletion I consists of students who graduated or continued high school. Completion II consists of students who graduated, continued high school, or received GEDs.

Table 3
 Longitudinal Completion/Student Status Rates, Grades 9-12, by Student Group, Texas Public
 Schools, Class of 2003: County Listing

County	Final status ^a	Number	Number in class	Rate (%)				
				All students	Afr. Am.	His- panic	White	Econ. dis.
GRAYSON	Completion I	1,310	1,406	93.2	88.5	93.1	93.5	91.6
	Completion II	1,365	1,406	97.1	92.9	95.4	97.5	95.4
	Graduated	1,256	1,406	89.3	80.5	85.1	90.3	83.1
	Continued HS	54	1,406	3.8	8.0	8.0	3.2	8.4
	Received GED	55	1,406	3.9	4.4	-	4.0	3.8
	Dropped Out	41	1,406	2.9	7.1	-	2.5	4.6
GREGG	Completion I	1,419	1,540	92.1	92.8	91.8	91.8	88.8
	Completion II	1,476	1,540	95.8	94.8	94.3	96.3	93.1
	Graduated	1,316	1,540	85.5	83.6	77.9	86.7	76.9
	Continued HS	103	1,540	6.7	9.2	13.9	5.1	11.9
	Received GED	57	1,540	3.7	2.0	-	4.5	4.4
	Dropped Out	64	1,540	4.2	5.2	5.7	3.7	6.9
GRIMES	Completion I	251	272	92.3	98.2	80.0	93.9	87.5
	Completion II	268	272	98.5	100.0	96.0	98.8	95.8
	Graduated	243	272	89.3	98.2	72.0	91.4	83.3
	Continued HS	8	272	2.9	-	-	-	-
	Received GED	17	272	6.3	-	16.0	4.9	8.3
	Dropped Out	-	272	-	-	-	-	-
GUADALUPE	Completion I	1,131	1,195	94.6	97.6	91.9	95.9	93.2
	Completion II	1,158	1,195	96.9	98.8	94.1	98.3	95.4
	Graduated	1,053	1,195	88.1	89.0	80.1	92.6	83.1
	Continued HS	78	1,195	6.5	8.5	11.8	3.3	10.0
	Received GED	27	1,195	2.3	-	2.2	2.3	2.3
	Dropped Out	37	1,195	3.1	-	5.9	1.7	4.6
HALE	Completion I	467	528	88.4	85.7	84.0	94.8	87.8
	Completion II	479	528	90.7	85.7	86.0	97.6	89.1
	Graduated	434	528	82.2	81.0	74.4	92.9	82.7
	Continued HS	33	528	6.3	-	9.6	-	5.1
	Received GED	12	528	2.3	-	2.0	2.8	-
	Dropped Out	49	528	9.3	-	14.0	2.4	10.9
HALL	Completion I	52	53	98.1	-	95.0	100.0	96.0
	Completion II	52	53	98.1	-	95.0	100.0	96.0
	Graduated	51	53	96.2	-	95.0	96.4	92.0
	Continued HS	-	53	-	-	-	-	-
	Received GED	-	53	-	-	-	-	-
	Dropped Out	-	53	-	-	-	-	-
HAMILTON	Completion I	107	112	95.5	-	100.0	95.0	90.6
	Completion II	111	112	99.1	-	100.0	99.0	100.0
	Graduated	106	112	94.6	-	100.0	94.0	90.6
	Continued HS	-	112	-	-	-	-	-
	Received GED	-	112	-	-	-	-	-
	Dropped Out	-	112	-	-	-	-	-
HANSFORD	Completion I	77	79	97.5	-	97.1	97.8	96.3
	Completion II	78	79	98.7	-	97.1	100.0	96.3
	Graduated	75	79	94.9	-	91.2	97.8	92.6
	Continued HS	-	79	-	-	-	-	-
	Received GED	-	79	-	-	-	-	-
	Dropped Out	-	79	-	-	-	-	-
HARDEMAN	Completion I	61	61	100.0	-	100.0	100.0	100.0
	Completion II	61	61	100.0	-	100.0	100.0	100.0
	Graduated	60	61	98.4	-	100.0	97.7	100.0
	Continued HS	-	61	-	-	-	-	-
	Received GED	-	61	-	-	-	-	-
	Dropped Out	-	61	-	-	-	-	-
HARDIN	Completion I	638	668	95.5	95.3	94.4	95.5	93.9
	Completion II	651	668	97.5	95.3	94.4	97.8	94.7
	Graduated	623	668	93.3	92.2	88.9	93.5	89.5
	Continued HS	15	668	2.2	-	-	2.1	4.4
	Received GED	13	668	1.9	-	-	2.2	-
	Dropped Out	17	668	2.5	-	-	2.2	5.3

Note. A dash (-) indicates data are not reported to protect student anonymity.

^aCompletion I consists of students who graduated or continued high school. Completion II consists of students who graduated, continued high school, or received GEDs.

Table 3
 Longitudinal Completion/Student Status Rates, Grades 9-12, by Student Group, Texas Public
 Schools, Class of 2003: County Listing

County	Final status ^a	Number	Number in class	Rate (%)				
				All students	Afr. Am.	His- panic	White	Econ. dis.
HARRIS	Completion I	36,715	40,742	90.1	88.9	86.0	93.8	88.7
	Completion II	37,986	40,742	93.2	91.1	89.1	97.8	91.2
	Graduated	32,457	40,742	79.7	75.3	70.4	89.3	72.2
	Continued HS	4,258	40,742	10.5	13.6	15.5	4.5	16.5
	Received GED	1,271	40,742	3.1	2.3	3.1	4.0	2.5
	Dropped Out	2,756	40,742	6.8	8.9	10.9	2.2	8.8
HARRISON	Completion I	811	874	92.8	91.3	96.3	93.2	91.0
	Completion II	850	874	97.3	94.1	96.3	98.6	95.7
	Graduated	769	874	88.0	84.2	70.4	90.4	83.3
	Continued HS	42	874	4.8	7.1	25.9	2.9	7.6
	Received GED	39	874	4.5	2.8	-	5.4	4.8
	Dropped Out	24	874	2.7	5.9	-	1.4	4.3
HARTLEY	Completion I	28	29	96.6	-	-	96.0	90.0
	Completion II	29	29	100.0	-	-	100.0	100.0
	Graduated	28	29	96.6	-	-	96.0	90.0
	Continued HS	-	29	-	-	-	-	-
	Received GED	-	29	-	-	-	-	-
	Dropped Out	-	29	-	-	-	-	-
HASKELL	Completion I	95	98	96.9	-	94.6	98.3	94.4
	Completion II	96	98	98.0	-	94.6	100.0	96.3
	Graduated	94	98	95.9	-	91.9	98.3	92.6
	Continued HS	-	98	-	-	-	-	-
	Received GED	-	98	-	-	-	-	-
	Dropped Out	-	98	-	-	-	-	-
HAYS	Completion I	1,393	1,480	94.1	95.7	91.9	95.5	90.8
	Completion II	1,439	1,480	97.2	97.9	95.4	98.5	95.1
	Graduated	1,258	1,480	85.0	83.0	76.1	91.2	75.3
	Continued HS	135	1,480	9.1	12.8	15.8	4.3	15.5
	Received GED	46	1,480	3.1	-	3.4	3.0	4.3
	Dropped Out	41	1,480	2.8	-	4.6	1.5	4.9
HEMPHILL	Completion I	64	86	74.4	-	47.8	91.2	42.9
	Completion II	85	86	98.8	100.0	95.7	100.0	100.0
	Graduated	60	86	69.8	-	34.8	91.2	39.3
	Continued HS	-	86	-	-	-	-	-
	Received GED	21	86	24.4	83.3	47.8	8.8	57.1
	Dropped Out	-	86	-	-	-	-	-
HENDERSON	Completion I	628	679	92.5	90.0	91.2	92.9	91.4
	Completion II	647	679	95.3	90.0	91.2	96.5	95.7
	Graduated	607	679	89.4	85.0	87.7	90.1	86.6
	Continued HS	21	679	3.1	-	-	2.8	4.8
	Received GED	19	679	2.8	-	-	3.5	4.3
	Dropped Out	32	679	4.7	10.0	8.8	3.5	4.3
HIDALGO	Completion I	7,779	8,426	92.3	90.0	92.2	94.4	93.1
	Completion II	7,928	8,426	94.1	95.0	93.9	97.7	94.6
	Graduated	6,695	8,426	79.5	80.0	78.9	88.3	79.6
	Continued HS	1,084	8,426	12.9	-	13.3	6.1	13.6
	Received GED	149	8,426	1.8	-	1.7	3.3	1.5
	Dropped Out	498	8,426	5.9	-	6.1	2.3	5.4
HILL	Completion I	402	425	94.6	96.5	87.3	95.7	92.1
	Completion II	410	425	96.5	96.5	88.9	98.0	95.4
	Graduated	387	425	91.1	96.5	84.1	91.4	88.7
	Continued HS	15	425	3.5	-	-	4.3	3.3
	Received GED	8	425	1.9	-	-	2.3	3.3
	Dropped Out	15	425	3.5	-	11.1	2.0	4.6
HOCKLEY	Completion I	330	348	94.8	100.0	90.8	98.2	90.6
	Completion II	338	348	97.1	100.0	94.5	99.4	93.2
	Graduated	315	348	90.5	100.0	82.8	97.0	82.9
	Continued HS	15	348	4.3	-	8.0	-	7.7
	Received GED	8	348	2.3	-	3.7	-	-
	Dropped Out	10	348	2.9	-	5.5	-	6.8

Note. A dash (-) indicates data are not reported to protect student anonymity.

^aCompletion I consists of students who graduated or continued high school. Completion II consists of students who graduated, continued high school, or received GEDs.

Table 3
 Longitudinal Completion/Student Status Rates, Grades 9-12, by Student Group, Texas Public
 Schools, Class of 2003: County Listing

County	Final status ^a	Number	Number in class	Rate (%)				
				All students	Afr. Am.	His-panic	White	Econ. dis.
HOOD	Completion I	456	518	88.0	-	81.1	88.6	73.4
	Completion II	491	518	94.8	-	86.8	95.6	85.9
	Graduated	427	518	82.4	-	66.0	84.1	60.9
	Continued HS	29	518	5.6	-	15.1	4.6	12.5
	Received GED	35	518	6.8	-	-	7.0	12.5
	Dropped Out	27	518	5.2	-	13.2	4.4	14.1
HOPKINS	Completion I	416	434	95.9	100.0	100.0	94.9	96.3
	Completion II	426	434	98.2	100.0	100.0	97.7	96.3
	Graduated	404	434	93.1	97.6	87.2	93.1	91.4
	Continued HS	12	434	2.8	-	12.8	1.7	-
	Received GED	10	434	2.3	-	-	2.9	-
	Dropped Out	8	434	1.8	-	-	2.3	-
HOUSTON	Completion I	259	273	94.9	97.8	92.9	93.5	92.2
	Completion II	266	273	97.4	97.8	100.0	97.0	94.1
	Graduated	252	273	92.3	97.8	85.7	89.9	89.2
	Continued HS	7	273	2.6	-	-	3.6	-
	Received GED	7	273	2.6	-	-	3.6	-
	Dropped Out	7	273	2.6	-	-	3.0	5.9
HOWARD	Completion I	322	356	90.4	100.0	82.5	93.6	86.9
	Completion II	341	356	95.8	100.0	90.4	98.2	91.9
	Graduated	300	356	84.3	89.5	71.1	90.4	74.7
	Continued HS	22	356	6.2	-	11.4	3.2	12.1
	Received GED	19	356	5.3	-	7.9	4.6	5.1
	Dropped Out	15	356	4.2	-	9.6	-	8.1
HUDSPETH	Completion I	55	60	91.7	-	90.2	100.0	90.7
	Completion II	55	60	91.7	-	90.2	100.0	90.7
	Graduated	55	60	91.7	-	90.2	100.0	90.7
	Continued HS	-	60	-	-	-	-	-
	Received GED	-	60	-	-	-	-	-
	Dropped Out	5	60	8.3	-	9.8	-	9.3
HUNT	Completion I	909	1,002	90.7	82.6	87.9	92.5	87.4
	Completion II	946	1,002	94.4	84.1	91.2	96.6	89.5
	Graduated	833	1,002	83.1	68.2	75.8	86.5	77.8
	Continued HS	76	1,002	7.6	14.4	12.1	6.0	9.6
	Received GED	37	1,002	3.7	-	-	4.2	2.1
	Dropped Out	56	1,002	5.6	15.9	8.8	3.4	10.5
HUTCHINSON	Completion I	313	332	94.3	100.0	90.4	94.8	92.5
	Completion II	320	332	96.4	100.0	90.4	97.4	92.5
	Graduated	303	332	91.3	100.0	80.8	93.3	84.9
	Continued HS	10	332	3.0	-	9.6	-	-
	Received GED	7	332	2.1	-	-	2.6	-
	Dropped Out	12	332	3.6	-	9.6	2.6	-
IRION	Completion I	35	36	97.2	-	100.0	96.2	91.7
	Completion II	36	36	100.0	-	100.0	100.0	100.0
	Graduated	35	36	97.2	-	100.0	96.2	91.7
	Continued HS	-	36	-	-	-	-	-
	Received GED	-	36	-	-	-	-	-
	Dropped Out	-	36	-	-	-	-	-
JACK	Completion I	116	122	95.1	-	100.0	94.3	94.4
	Completion II	119	122	97.5	-	100.0	97.1	94.4
	Graduated	110	122	90.2	-	100.0	88.6	91.7
	Continued HS	6	122	4.9	-	-	5.7	-
	Received GED	-	122	-	-	-	-	-
	Dropped Out	-	122	-	-	-	-	-
JACKSON	Completion I	218	233	93.6	100.0	85.5	96.2	85.0
	Completion II	229	233	98.3	100.0	93.5	100.0	96.7
	Graduated	210	233	90.1	92.3	75.8	95.6	78.3
	Continued HS	8	233	3.4	-	9.7	-	-
	Received GED	11	233	4.7	-	8.1	3.8	11.7
	Dropped Out	-	233	-	-	-	-	-

Note. A dash (-) indicates data are not reported to protect student anonymity.
^aCompletion I consists of students who graduated or continued high school. Completion II consists of students who graduated, continued high school, or received GEDs.

Table 3
 Longitudinal Completion/Student Status Rates, Grades 9-12, by Student Group, Texas Public
 Schools, Class of 2003: County Listing

County	Final status ^a	Number	Number in class	Rate (%)				
				All students	Afr. Am.	His- panic	White	Econ. dis.
JASPER	Completion I	474	499	95.0	97.5	94.7	94.2	95.1
	Completion II	478	499	95.8	97.5	94.7	95.3	95.7
	Graduated	465	499	93.2	94.9	84.2	93.1	93.3
	Continued HS	9	499	1.8	-	-	-	-
	Received GED	-	499	-	-	-	-	-
	Dropped Out	21	499	4.2	-	-	4.7	4.3
JEFF DAVIS	Completion I	42	51	82.4	-	86.7	85.3	63.2
	Completion II	50	51	98.0	-	100.0	100.0	94.7
	Graduated	39	51	76.5	-	86.7	76.5	57.9
	Continued HS	-	51	-	-	-	-	-
	Received GED	8	51	15.7	-	-	14.7	31.6
	Dropped Out	-	51	-	-	-	-	-
JEFFERSON	Completion I	2,565	2,830	90.6	88.6	87.4	92.8	87.6
	Completion II	2,650	2,830	93.6	90.2	90.0	97.6	90.3
	Graduated	2,363	2,830	83.5	79.1	77.8	88.5	78.3
	Continued HS	202	2,830	7.1	9.5	9.6	4.3	9.3
	Received GED	85	2,830	3.0	1.6	2.5	4.9	2.7
	Dropped Out	180	2,830	6.4	9.8	10.0	2.4	9.7
JIM HOGG	Completion I	82	85	96.5	-	96.3	-	97.1
	Completion II	82	85	96.5	-	96.3	-	97.1
	Graduated	81	85	95.3	-	95.1	-	95.7
	Continued HS	-	85	-	-	-	-	-
	Received GED	-	85	-	-	-	-	-
	Dropped Out	-	85	-	-	-	-	-
JIM WELLS	Completion I	511	572	89.3	-	88.0	95.0	87.3
	Completion II	547	572	95.6	-	94.9	99.0	92.7
	Graduated	474	572	82.9	-	81.0	92.1	78.8
	Continued HS	37	572	6.5	-	7.1	-	8.5
	Received GED	36	572	6.3	-	6.8	-	5.4
	Dropped Out	25	572	4.4	-	5.1	-	7.3
JOHNSON	Completion I	1,613	1,710	94.3	100.0	95.2	93.9	89.8
	Completion II	1,660	1,710	97.1	100.0	97.6	96.9	94.8
	Graduated	1,523	1,710	89.1	90.2	81.3	90.1	80.2
	Continued HS	90	1,710	5.3	9.8	13.9	3.8	9.6
	Received GED	47	1,710	2.7	-	2.4	2.9	5.0
	Dropped Out	50	1,710	2.9	-	2.4	3.1	5.2
JONES	Completion I	208	220	94.5	100.0	96.2	93.5	94.1
	Completion II	215	220	97.7	100.0	100.0	96.8	98.8
	Graduated	206	220	93.6	100.0	94.2	92.9	92.9
	Continued HS	-	220	-	-	-	-	-
	Received GED	7	220	3.2	-	-	3.2	-
	Dropped Out	5	220	2.3	-	-	3.2	-
KARNES	Completion I	183	194	94.3	100.0	93.3	95.1	93.1
	Completion II	188	194	96.9	100.0	95.2	98.8	96.6
	Graduated	166	194	85.6	100.0	82.9	87.7	83.9
	Continued HS	17	194	8.8	-	10.5	7.4	9.2
	Received GED	5	194	2.6	-	-	-	-
	Dropped Out	6	194	3.1	-	4.8	-	-
KAUFMAN	Completion I	1,085	1,138	95.3	95.9	91.8	95.7	91.2
	Completion II	1,114	1,138	97.9	97.3	93.6	98.6	94.5
	Graduated	1,034	1,138	90.9	92.6	83.6	91.6	84.3
	Continued HS	51	1,138	4.5	3.4	8.2	4.2	6.9
	Received GED	29	1,138	2.5	-	-	2.9	3.2
	Dropped Out	24	1,138	2.1	-	6.4	1.4	5.5
KENDALL	Completion I	420	447	94.0	-	91.5	94.7	83.6
	Completion II	441	447	98.7	100.0	96.3	99.2	95.5
	Graduated	413	447	92.4	-	85.4	94.4	74.6
	Continued HS	7	447	1.6	-	6.1	-	9.0
	Received GED	21	447	4.7	-	-	4.5	11.9
	Dropped Out	6	447	1.3	-	-	-	-

Note. A dash (-) indicates data are not reported to protect student anonymity.

^aCompletion I consists of students who graduated or continued high school. Completion II consists of students who graduated, continued high school, or received GEDs.

Table 3
 Longitudinal Completion/Student Status Rates, Grades 9-12, by Student Group, Texas Public
 Schools, Class of 2003: County Listing

County	Final status ^a	Number	Number in class	Rate (%)				
				All students	Afr. Am.	Hispanic	White	Econ. dis.
KENT	Completion I	14	15	93.3	-	-	92.3	100.0
	Completion II	14	15	93.3	-	-	92.3	100.0
	Graduated	14	15	93.3	-	-	92.3	100.0
	Continued HS	-	15	-	-	-	-	-
	Received GED	-	15	-	-	-	-	-
	Dropped Out	-	15	-	-	-	-	-
KERR	Completion I	467	526	88.8	100.0	86.9	88.9	86.8
	Completion II	509	526	96.8	100.0	94.2	97.6	93.9
	Graduated	429	526	81.6	100.0	72.3	84.3	73.7
	Continued HS	38	526	7.2	-	14.6	4.6	13.2
	Received GED	42	526	8.0	-	7.3	8.7	7.0
	Dropped Out	17	526	3.2	-	5.8	2.4	6.1
KIMBLE	Completion I	46	48	95.8	-	100.0	94.3	90.0
	Completion II	46	48	95.8	-	100.0	94.3	90.0
	Graduated	42	48	87.5	-	83.3	88.6	80.0
	Continued HS	-	48	-	-	-	-	-
	Received GED	-	48	-	-	-	-	-
	Dropped Out	-	48	-	-	-	-	-
KING	Completion I	9	9	100.0	-	-	100.0	-
	Completion II	9	9	100.0	-	-	100.0	-
	Graduated	9	9	100.0	-	-	100.0	-
	Continued HS	-	9	-	-	-	-	-
	Received GED	-	9	-	-	-	-	-
	Dropped Out	-	9	-	-	-	-	-
KINNEY	Completion I	48	52	92.3	-	93.1	89.5	89.5
	Completion II	51	52	98.1	-	96.6	100.0	94.7
	Graduated	47	52	90.4	-	93.1	89.5	89.5
	Continued HS	-	52	-	-	-	-	-
	Received GED	-	52	-	-	-	-	-
	Dropped Out	-	52	-	-	-	-	-
KLEBERG	Completion I	433	473	91.5	92.9	90.1	96.0	86.1
	Completion II	443	473	93.7	92.9	92.7	97.0	89.4
	Graduated	399	473	84.4	92.9	82.5	90.1	78.8
	Continued HS	34	473	7.2	-	7.6	5.9	7.2
	Received GED	10	473	2.1	-	2.5	-	3.4
	Dropped Out	30	473	6.3	-	7.3	-	10.6
KNOX	Completion I	74	77	96.1	90.0	90.9	100.0	97.4
	Completion II	75	77	97.4	90.0	95.5	100.0	97.4
	Graduated	72	77	93.5	90.0	90.9	95.5	92.1
	Continued HS	-	77	-	-	-	-	-
	Received GED	-	77	-	-	-	-	-
	Dropped Out	-	77	-	-	-	-	-
LA SALLE	Completion I	86	96	89.6	-	88.0	100.0	88.9
	Completion II	93	96	96.9	-	96.4	100.0	95.2
	Graduated	80	96	83.3	-	81.9	92.3	81.0
	Continued HS	6	96	6.3	-	6.0	-	7.9
	Received GED	7	96	7.3	-	8.4	-	-
	Dropped Out	-	96	-	-	-	-	-
LAMAR	Completion I	534	559	95.5	96.2	100.0	95.2	96.8
	Completion II	553	559	98.9	98.1	100.0	99.1	99.2
	Graduated	518	559	92.7	90.4	100.0	93.1	91.1
	Continued HS	16	559	2.9	5.8	-	2.1	5.6
	Received GED	19	559	3.4	-	-	3.9	-
	Dropped Out	6	559	1.1	-	-	-	-
LAMB	Completion I	229	244	93.9	81.8	91.9	98.0	93.3
	Completion II	235	244	96.3	81.8	94.8	100.0	95.2
	Graduated	225	244	92.2	81.8	88.9	98.0	91.4
	Continued HS	-	244	-	-	-	-	-
	Received GED	6	244	2.5	-	-	-	-
	Dropped Out	9	244	3.7	-	5.2	-	4.8

Note. A dash (-) indicates data are not reported to protect student anonymity.
^aCompletion I consists of students who graduated or continued high school. Completion II consists of students who graduated, continued high school, or received GEDs.

Table 3
 Longitudinal Completion/Student Status Rates, Grades 9-12, by Student Group, Texas Public Schools, Class of 2003: County Listing

County	Final status ^a	Number	Number in class	Rate (%)				
				All students	Afr. Am.	Hispanic	White	Econ. dis.
LAMPASAS	Completion I	249	271	91.9	100.0	85.7	92.9	84.6
	Completion II	265	271	97.8	100.0	95.9	98.1	96.9
	Graduated	239	271	88.2	100.0	75.5	90.5	75.4
	Continued HS	10	271	3.7	-	10.2	2.4	9.2
	Received GED	16	271	5.9	-	10.2	5.2	12.3
	Dropped Out	6	271	2.2	-	-	-	-
LAVACA	Completion I	148	157	94.3	81.8	87.5	96.2	91.7
	Completion II	155	157	98.7	100.0	87.5	100.0	100.0
	Graduated	147	157	93.6	81.8	87.5	95.4	91.7
	Continued HS	-	157	-	-	-	-	-
	Received GED	7	157	4.5	-	-	3.8	-
	Dropped Out	-	157	-	-	-	-	-
LEE	Completion I	226	233	97.0	100.0	100.0	96.5	100.0
	Completion II	232	233	99.6	100.0	100.0	99.3	100.0
	Graduated	221	233	94.8	96.7	96.6	95.1	95.5
	Continued HS	5	233	2.1	-	-	-	-
	Received GED	6	233	2.6	-	-	-	-
	Dropped Out	-	233	-	-	-	-	-
LEON	Completion I	201	212	94.8	91.2	100.0	95.0	90.2
	Completion II	204	212	96.2	91.2	100.0	96.9	90.2
	Graduated	193	212	91.0	91.2	87.5	91.3	85.2
	Continued HS	8	212	3.8	-	-	3.7	-
	Received GED	-	212	-	-	-	-	-
	Dropped Out	8	212	3.8	-	-	3.1	9.8
LIBERTY	Completion I	852	917	92.9	93.3	91.1	93.0	91.5
	Completion II	877	917	95.6	95.0	93.1	96.1	94.1
	Graduated	796	917	86.8	84.2	77.2	88.7	80.9
	Continued HS	56	917	6.1	9.2	13.9	4.3	10.6
	Received GED	25	917	2.7	-	-	3.0	2.5
	Dropped Out	40	917	4.4	5.0	6.9	3.9	5.9
LIMESTONE	Completion I	274	290	94.5	93.8	85.7	96.7	92.1
	Completion II	279	290	96.2	95.3	85.7	98.9	93.3
	Graduated	267	290	92.1	92.2	81.0	94.6	91.0
	Continued HS	7	290	2.4	-	-	-	-
	Received GED	5	290	1.7	-	-	-	-
	Dropped Out	11	290	3.8	-	14.3	-	6.7
LIPSCOMB	Completion I	55	58	94.8	-	94.1	95.0	92.0
	Completion II	57	58	98.3	-	94.1	100.0	96.0
	Graduated	53	58	91.4	-	82.4	95.0	88.0
	Continued HS	-	58	-	-	-	-	-
	Received GED	-	58	-	-	-	-	-
	Dropped Out	-	58	-	-	-	-	-
LIVE OAK	Completion I	76	91	83.5	-	84.1	83.0	80.8
	Completion II	82	91	90.1	-	84.1	95.7	88.5
	Graduated	70	91	76.9	-	72.7	80.9	65.4
	Continued HS	6	91	6.6	-	11.4	-	-
	Received GED	6	91	6.6	-	-	12.8	-
	Dropped Out	9	91	9.9	-	15.9	-	-
LLANO	Completion I	107	115	93.0	-	90.9	93.1	83.3
	Completion II	110	115	95.7	-	90.9	96.1	83.3
	Graduated	104	115	90.4	-	81.8	91.2	83.3
	Continued HS	-	115	-	-	-	-	-
	Received GED	-	115	-	-	-	-	-
	Dropped Out	5	115	4.3	-	-	-	-
LUBBOCK	Completion I	2,795	3,019	92.6	89.0	89.5	95.4	89.1
	Completion II	2,870	3,019	95.1	91.0	91.8	98.0	91.6
	Graduated	2,623	3,019	86.9	81.3	80.7	92.2	79.7
	Continued HS	172	3,019	5.7	7.7	8.8	3.2	9.3
	Received GED	75	3,019	2.5	2.0	2.3	2.6	2.6
	Dropped Out	149	3,019	4.9	9.0	8.2	2.0	8.4

Note. A dash (-) indicates data are not reported to protect student anonymity.

^aCompletion I consists of students who graduated or continued high school. Completion II consists of students who graduated, continued high school, or received GEDs.

Table 3
 Longitudinal Completion/Student Status Rates, Grades 9-12, by Student Group, Texas Public
 Schools, Class of 2003: County Listing

County	Final status ^a	Number	Number in class	Rate (%)				
				All students	Afr. Am.	Hispanic	White	Econ. dis.
LYNN	Completion I	121	126	96.0	-	91.2	100.0	91.5
	Completion II	123	126	97.6	-	94.7	100.0	94.9
	Graduated	119	126	94.4	-	89.5	98.4	88.1
	Continued HS	-	126	-	-	-	-	-
	Received GED	-	126	-	-	-	-	-
	Dropped Out	-	126	-	-	-	-	-
MADISON	Completion I	135	146	92.5	95.7	94.7	91.3	93.5
	Completion II	144	146	98.6	95.7	100.0	99.0	100.0
	Graduated	131	146	89.7	87.0	89.5	90.3	87.1
	Continued HS	-	146	-	-	-	-	-
	Received GED	9	146	6.2	-	-	7.8	-
	Dropped Out	-	146	-	-	-	-	-
MARION	Completion I	96	101	95.0	100.0	-	93.7	97.6
	Completion II	97	101	96.0	100.0	-	95.2	97.6
	Graduated	93	101	92.1	97.2	-	90.5	95.1
	Continued HS	-	101	-	-	-	-	-
	Received GED	-	101	-	-	-	-	-
	Dropped Out	-	101	-	-	-	-	-
MARTIN	Completion I	66	71	93.0	-	90.6	94.7	90.9
	Completion II	67	71	94.4	-	90.6	97.4	90.9
	Graduated	65	71	91.5	-	87.5	94.7	87.9
	Continued HS	-	71	-	-	-	-	-
	Received GED	-	71	-	-	-	-	-
	Dropped Out	-	71	-	-	-	-	-
MASON	Completion I	49	51	96.1	-	95.5	96.6	100.0
	Completion II	50	51	98.0	-	100.0	96.6	100.0
	Graduated	48	51	94.1	-	90.9	96.6	95.7
	Continued HS	-	51	-	-	-	-	-
	Received GED	-	51	-	-	-	-	-
	Dropped Out	-	51	-	-	-	-	-
MATAGORDA	Completion I	471	509	92.5	94.2	86.8	95.9	89.0
	Completion II	485	509	95.3	94.2	91.0	98.4	92.8
	Graduated	458	509	90.0	89.9	82.0	95.5	85.6
	Continued HS	13	509	2.6	-	4.8	-	3.4
	Received GED	14	509	2.8	-	4.2	2.4	3.8
	Dropped Out	24	509	4.7	-	9.0	-	7.2
MAVERICK	Completion I	611	700	87.3	-	87.2	87.5	86.8
	Completion II	637	700	91.0	-	91.0	87.5	90.6
	Graduated	514	700	73.4	-	73.1	87.5	72.1
	Continued HS	97	700	13.9	-	14.1	-	14.7
	Received GED	26	700	3.7	-	3.8	-	3.8
	Dropped Out	63	700	9.0	-	9.0	-	9.4
MCCULLOCH	Completion I	113	117	96.6	-	95.0	97.4	93.0
	Completion II	116	117	99.1	-	97.5	100.0	98.2
	Graduated	112	117	95.7	-	92.5	97.4	91.2
	Continued HS	-	117	-	-	-	-	-
	Received GED	-	117	-	-	-	-	-
	Dropped Out	-	117	-	-	-	-	-
MCLENNAN	Completion I	2,466	2,678	92.1	91.1	88.4	93.6	88.3
	Completion II	2,570	2,678	96.0	94.1	91.7	98.0	93.1
	Graduated	2,286	2,678	85.4	78.6	76.7	90.2	79.0
	Continued HS	180	2,678	6.7	12.5	11.7	3.4	9.3
	Received GED	104	2,678	3.9	3.0	3.2	4.4	4.8
	Dropped Out	108	2,678	4.0	5.9	8.3	2.0	6.9
MCMULLEN	Completion I	13	13	100.0	-	100.0	100.0	100.0
	Completion II	13	13	100.0	-	100.0	100.0	100.0
	Graduated	13	13	100.0	-	100.0	100.0	100.0
	Continued HS	-	13	-	-	-	-	-
	Received GED	-	13	-	-	-	-	-
	Dropped Out	-	13	-	-	-	-	-

Note. A dash (-) indicates data are not reported to protect student anonymity.
^aCompletion I consists of students who graduated or continued high school. Completion II consists of students who graduated, continued high school, or received GEDs.

Table 3
 Longitudinal Completion/Student Status Rates, Grades 9-12, by Student Group, Texas Public
 Schools, Class of 2003: County Listing

County	Final status ^a	Number	Number in class	Rate (%)				
				All students	Afr. Am.	His- panic	White	Econ. dis.
MEDINA	Completion I	557	596	93.5	100.0	92.8	93.9	92.1
	Completion II	575	596	96.5	100.0	94.5	98.3	94.8
	Graduated	522	596	87.6	100.0	83.8	90.9	82.7
	Continued HS	35	596	5.9	-	9.0	3.0	9.4
	Received GED	18	596	3.0	-	1.7	4.4	2.6
	Dropped Out	21	596	3.5	-	5.5	1.7	5.2
MENARD	Completion I	36	36	100.0	-	100.0	100.0	100.0
	Completion II	36	36	100.0	-	100.0	100.0	100.0
	Graduated	36	36	100.0	-	100.0	100.0	100.0
	Continued HS	-	36	-	-	-	-	-
	Received GED	-	36	-	-	-	-	-
	Dropped Out	-	36	-	-	-	-	-
MIDLAND	Completion I	1,460	1,606	90.9	84.9	88.9	92.8	82.5
	Completion II	1,505	1,606	93.7	87.7	91.1	96.0	86.4
	Graduated	1,315	1,606	81.9	75.3	71.6	88.1	66.2
	Continued HS	145	1,606	9.0	9.6	17.3	4.7	16.3
	Received GED	45	1,606	2.8	-	2.2	3.2	3.9
	Dropped Out	101	1,606	6.3	12.3	8.9	4.0	13.6
MILAM	Completion I	346	365	94.8	96.4	92.0	95.5	93.1
	Completion II	356	365	97.5	98.2	93.1	99.1	95.4
	Graduated	329	365	90.1	89.1	80.5	94.2	85.4
	Continued HS	17	365	4.7	-	11.5	-	7.7
	Received GED	10	365	2.7	-	-	3.6	-
	Dropped Out	9	365	2.5	-	6.9	-	4.6
MILLS	Completion I	57	57	100.0	-	100.0	100.0	100.0
	Completion II	57	57	100.0	-	100.0	100.0	100.0
	Graduated	54	57	94.7	-	100.0	93.3	86.4
	Continued HS	-	57	-	-	-	-	-
	Received GED	-	57	-	-	-	-	-
	Dropped Out	-	57	-	-	-	-	-
MITCHELL	Completion I	102	109	93.6	66.7	97.6	94.8	92.3
	Completion II	105	109	96.3	66.7	100.0	98.3	94.9
	Graduated	100	109	91.7	66.7	92.9	94.8	87.2
	Continued HS	-	109	-	-	-	-	-
	Received GED	-	109	-	-	-	-	-
	Dropped Out	-	109	-	-	-	-	-
MONTAGUE	Completion I	214	233	91.8	-	85.7	92.1	88.0
	Completion II	223	233	95.7	-	85.7	96.3	90.0
	Graduated	206	233	88.4	-	78.6	89.4	82.0
	Continued HS	8	233	3.4	-	-	2.8	-
	Received GED	9	233	3.9	-	-	4.2	-
	Dropped Out	10	233	4.3	-	-	3.7	10.0
MONTGOMERY	Completion I	3,832	4,134	92.7	90.4	91.9	92.8	87.8
	Completion II	4,028	4,134	97.4	94.6	96.4	97.7	94.5
	Graduated	3,617	4,134	87.5	82.0	82.3	88.5	77.2
	Continued HS	215	4,134	5.2	8.4	9.6	4.4	10.6
	Received GED	196	4,134	4.7	4.2	4.4	4.9	6.7
	Dropped Out	106	4,134	2.6	5.4	3.6	2.3	5.5
MOORE	Completion I	280	296	94.6	-	92.1	97.1	89.7
	Completion II	290	296	98.0	-	96.7	99.3	94.9
	Graduated	273	296	92.2	-	88.2	96.4	84.6
	Continued HS	7	296	2.4	-	3.9	-	-
	Received GED	10	296	3.4	-	4.6	-	-
	Dropped Out	6	296	2.0	-	3.3	-	-
MORRIS	Completion I	147	166	88.6	89.1	-	89.5	82.0
	Completion II	157	166	94.6	89.1	83.3	98.1	88.5
	Graduated	145	166	87.3	89.1	-	87.6	80.3
	Continued HS	-	166	-	-	-	-	-
	Received GED	10	166	6.0	-	-	8.6	-
	Dropped Out	9	166	5.4	10.9	-	-	11.5

Note. A dash (-) indicates data are not reported to protect student anonymity.

^aCompletion I consists of students who graduated or continued high school. Completion II consists of students who graduated, continued high school, or received GEDs.

Table 3
 Longitudinal Completion/Student Status Rates, Grades 9-12, by Student Group, Texas Public
 Schools, Class of 2003: County Listing

County	Final status ^a	Number	Number in class	Rate (%)				
				All students	Afr. Am.	Hispanic	White	Econ. dis.
MOTLEY	Completion I	13	13	100.0	-	-	100.0	-
	Completion II	13	13	100.0	-	-	100.0	-
	Graduated	13	13	100.0	-	-	100.0	-
	Continued HS	-	13	-	-	-	-	-
	Received GED	-	13	-	-	-	-	-
	Dropped Out	-	13	-	-	-	-	-
NACOGDOCHES	Completion I	634	690	91.9	95.8	88.2	91.2	89.9
	Completion II	657	690	95.2	96.5	88.2	96.1	91.2
	Graduated	600	690	87.0	85.2	80.0	88.6	78.4
	Continued HS	34	690	4.9	10.6	8.2	2.6	11.5
	Received GED	23	690	3.3	-	-	4.8	-
	Dropped Out	33	690	4.8	3.5	11.8	3.9	8.8
NAVARRO	Completion I	490	554	88.4	85.7	93.9	88.0	84.5
	Completion II	515	554	93.0	88.1	93.9	94.4	88.7
	Graduated	460	554	83.0	80.2	75.6	86.3	81.0
	Continued HS	30	554	5.4	5.6	18.3	1.8	3.5
	Received GED	25	554	4.5	-	-	6.4	4.2
	Dropped Out	39	554	7.0	11.9	6.1	5.6	11.3
NEWTON	Completion I	146	150	97.3	100.0	-	95.6	97.3
	Completion II	149	150	99.3	100.0	-	98.9	98.7
	Graduated	142	150	94.7	96.3	-	93.4	93.3
	Continued HS	-	150	-	-	-	-	-
	Received GED	-	150	-	-	-	-	-
	Dropped Out	-	150	-	-	-	-	-
NOLAN	Completion I	222	231	96.1	100.0	96.3	95.5	93.4
	Completion II	230	231	99.6	100.0	98.8	100.0	98.7
	Graduated	217	231	93.9	100.0	91.5	94.7	86.8
	Continued HS	5	231	2.2	-	-	-	6.6
	Received GED	8	231	3.5	-	-	4.5	-
	Dropped Out	-	231	-	-	-	-	-
NUECES	Completion I	3,663	3,973	92.2	90.2	91.8	93.1	90.9
	Completion II	3,833	3,973	96.5	95.6	95.6	98.2	95.3
	Graduated	3,316	3,973	83.5	81.4	80.7	88.2	78.7
	Continued HS	347	3,973	8.7	8.7	11.1	4.9	12.2
	Received GED	170	3,973	4.3	5.5	3.8	5.1	4.5
	Dropped Out	140	3,973	3.5	4.4	4.4	1.8	4.7
OCHILTREE	Completion I	149	155	96.1	-	93.3	97.2	92.9
	Completion II	152	155	98.1	-	95.6	99.1	97.6
	Graduated	144	155	92.9	-	91.1	94.4	85.7
	Continued HS	5	155	3.2	-	-	-	-
	Received GED	-	155	-	-	-	-	-
	Dropped Out	-	155	-	-	-	-	-
OLDHAM	Completion I	71	74	95.9	-	100.0	95.1	100.0
	Completion II	74	74	100.0	-	100.0	100.0	100.0
	Graduated	71	74	95.9	-	100.0	95.1	100.0
	Continued HS	-	74	-	-	-	-	-
	Received GED	-	74	-	-	-	-	-
	Dropped Out	-	74	-	-	-	-	-
ORANGE	Completion I	1,072	1,142	93.9	91.1	92.5	94.1	89.2
	Completion II	1,113	1,142	97.5	92.9	97.5	97.9	94.0
	Graduated	1,030	1,142	90.2	90.2	77.5	90.5	81.9
	Continued HS	42	1,142	3.7	-	15.0	3.6	7.2
	Received GED	41	1,142	3.6	-	-	3.8	4.8
	Dropped Out	29	1,142	2.5	7.1	-	2.1	6.0
PALO PINTO	Completion I	293	315	93.0	91.7	88.4	93.7	92.0
	Completion II	306	315	97.1	91.7	95.3	97.6	98.0
	Graduated	281	315	89.2	91.7	76.7	91.0	81.0
	Continued HS	12	315	3.8	-	11.6	2.7	11.0
	Received GED	13	315	4.1	-	-	3.9	6.0
	Dropped Out	9	315	2.9	-	-	2.4	-

Note. A dash (-) indicates data are not reported to protect student anonymity.

^aCompletion I consists of students who graduated or continued high school. Completion II consists of students who graduated, continued high school, or received GEDs.

Table 3
 Longitudinal Completion/Student Status Rates, Grades 9-12, by Student Group, Texas Public
 Schools, Class of 2003: County Listing

County	Final status ^a	Number	Number in class	Rate (%)				
				All students	Afr. Am.	His- panic	White	Econ. dis.
PANOLA	Completion I	280	308	90.9	95.5	87.5	89.5	86.1
	Completion II	293	308	95.1	95.5	87.5	95.2	89.9
	Graduated	258	308	83.8	90.9	87.5	81.7	73.4
	Continued HS	22	308	7.1	-	-	7.9	12.7
	Received GED	13	308	4.2	-	-	5.7	-
	Dropped Out	15	308	4.9	-	-	4.8	10.1
PARKER	Completion I	1,131	1,212	93.3	63.6	89.7	93.9	89.3
	Completion II	1,182	1,212	97.5	90.9	93.6	97.8	93.4
	Graduated	1,102	1,212	90.9	63.6	85.9	91.6	84.4
	Continued HS	29	1,212	2.4	-	-	2.3	4.9
	Received GED	51	1,212	4.2	-	-	4.0	4.1
	Dropped Out	30	1,212	2.5	-	6.4	2.2	6.6
PARMER	Completion I	153	157	97.5	-	95.7	100.0	97.2
	Completion II	154	157	98.1	-	96.8	100.0	97.2
	Graduated	149	157	94.9	-	92.5	98.4	95.8
	Continued HS	-	157	-	-	-	-	-
	Received GED	-	157	-	-	-	-	-
	Dropped Out	-	157	-	-	-	-	-
PECOS	Completion I	235	277	84.8	-	87.7	87.6	72.1
	Completion II	266	277	96.0	85.7	95.0	98.9	93.4
	Graduated	226	277	81.6	-	82.7	87.6	66.4
	Continued HS	9	277	3.2	-	5.0	-	5.7
	Received GED	31	277	11.2	85.7	7.3	11.2	21.3
	Dropped Out	11	277	4.0	-	5.0	-	6.6
POLK	Completion I	403	433	93.1	100.0	87.3	92.7	91.4
	Completion II	419	433	96.8	100.0	89.1	97.3	92.9
	Graduated	384	433	88.7	97.0	80.0	88.7	85.7
	Continued HS	19	433	4.4	-	-	4.0	5.7
	Received GED	16	433	3.7	-	-	4.7	-
	Dropped Out	14	433	3.2	-	10.9	2.7	7.1
POTTER	Completion I	1,757	1,944	90.4	93.0	89.1	90.5	88.7
	Completion II	1,853	1,944	95.3	93.7	93.6	96.2	92.7
	Graduated	1,667	1,944	85.8	88.0	82.7	86.7	82.1
	Continued HS	90	1,944	4.6	5.1	6.4	3.8	6.6
	Received GED	96	1,944	4.9	-	4.6	5.7	4.0
	Dropped Out	91	1,944	4.7	6.3	6.4	3.8	7.3
PRESIDIO	Completion I	113	133	85.0	-	83.5	100.0	84.8
	Completion II	113	133	85.0	-	83.5	100.0	84.8
	Graduated	105	133	78.9	-	77.7	91.7	77.7
	Continued HS	8	133	6.0	-	5.8	-	7.1
	Received GED	-	133	-	-	-	-	-
	Dropped Out	20	133	15.0	-	16.5	-	15.2
RAINS	Completion I	97	102	95.1	-	100.0	94.6	91.7
	Completion II	100	102	98.0	-	100.0	97.8	95.8
	Graduated	92	102	90.2	-	100.0	89.2	83.3
	Continued HS	5	102	4.9	-	-	5.4	-
	Received GED	-	102	-	-	-	-	-
	Dropped Out	-	102	-	-	-	-	-
RANDALL	Completion I	493	563	87.6	54.5	73.6	89.7	71.4
	Completion II	547	563	97.2	90.9	86.8	98.4	90.5
	Graduated	481	563	85.4	54.5	69.8	87.7	69.0
	Continued HS	12	563	2.1	-	-	2.1	-
	Received GED	54	563	9.6	-	13.2	8.6	19.0
	Dropped Out	16	563	2.8	-	13.2	1.6	-
REAGAN	Completion I	74	74	100.0	-	100.0	100.0	100.0
	Completion II	74	74	100.0	-	100.0	100.0	100.0
	Graduated	74	74	100.0	-	100.0	100.0	100.0
	Continued HS	-	74	-	-	-	-	-
	Received GED	-	74	-	-	-	-	-
	Dropped Out	-	74	-	-	-	-	-

Note. A dash (-) indicates data are not reported to protect student anonymity.

^aCompletion I consists of students who graduated or continued high school. Completion II consists of students who graduated, continued high school, or received GEDs.

Table 3
 Longitudinal Completion/Student Status Rates, Grades 9-12, by Student Group, Texas Public
 Schools, Class of 2003: County Listing

County	Final status ^a	Number	Number in class	Rate (%)				
				All students	Afr. Am.	His-panic	White	Econ. dis.
REAL	Completion I	23	24	95.8	-	83.3	100.0	87.5
	Completion II	23	24	95.8	-	83.3	100.0	87.5
	Graduated	21	24	87.5	-	83.3	88.9	87.5
	Continued HS	-	24	-	-	-	-	-
	Received GED	-	24	-	-	-	-	-
	Dropped Out	-	24	-	-	-	-	-
RED RIVER	Completion I	167	179	93.3	95.0	66.7	95.3	89.1
	Completion II	174	179	97.2	97.5	88.9	98.4	95.3
	Graduated	161	179	89.9	90.0	55.6	93.0	81.3
	Continued HS	6	179	3.4	-	-	-	7.8
	Received GED	7	179	3.9	-	-	-	-
	Dropped Out	5	179	2.8	-	-	-	-
REEVES	Completion I	178	192	92.7	-	92.0	97.4	91.0
	Completion II	186	192	96.9	-	96.7	100.0	96.6
	Graduated	175	192	91.1	-	90.0	97.4	88.8
	Continued HS	-	192	-	-	-	-	-
	Received GED	8	192	4.2	-	4.7	-	5.6
	Dropped Out	6	192	3.1	-	3.3	-	-
REFUGIO	Completion I	94	100	94.0	77.8	93.6	97.6	91.9
	Completion II	96	100	96.0	88.9	95.7	97.6	97.3
	Graduated	89	100	89.0	77.8	85.1	95.2	83.8
	Continued HS	5	100	5.0	-	-	-	-
	Received GED	-	100	-	-	-	-	-
	Dropped Out	-	100	-	-	-	-	-
ROBERTS	Completion I	10	11	90.9	-	-	90.9	-
	Completion II	10	11	90.9	-	-	90.9	-
	Graduated	10	11	90.9	-	-	90.9	-
	Continued HS	-	11	-	-	-	-	-
	Received GED	-	11	-	-	-	-	-
	Dropped Out	-	11	-	-	-	-	-
ROBERTSON	Completion I	192	207	92.8	96.1	93.9	91.0	89.5
	Completion II	202	207	97.6	100.0	97.0	96.7	95.3
	Graduated	191	207	92.3	94.1	93.9	91.0	88.4
	Continued HS	-	207	-	-	-	-	-
	Received GED	10	207	4.8	-	-	5.7	5.8
	Dropped Out	5	207	2.4	-	-	-	-
ROCKWALL	Completion I	685	727	94.2	100.0	87.8	94.5	88.1
	Completion II	704	727	96.8	100.0	91.9	97.2	95.5
	Graduated	648	727	89.1	96.8	67.6	91.1	68.7
	Continued HS	37	727	5.1	-	20.3	3.5	19.4
	Received GED	19	727	2.6	-	-	2.6	7.5
	Dropped Out	23	727	3.2	-	8.1	2.8	-
RUNNELS	Completion I	177	187	94.7	-	91.7	95.9	90.8
	Completion II	180	187	96.3	-	96.7	95.9	93.8
	Graduated	175	187	93.6	-	90.0	95.9	87.7
	Continued HS	-	187	-	-	-	-	-
	Received GED	-	187	-	-	-	-	-
	Dropped Out	7	187	3.7	-	-	4.1	-
RUSK	Completion I	454	491	92.5	94.9	80.9	93.2	91.3
	Completion II	470	491	95.7	95.8	85.1	97.2	93.2
	Graduated	434	491	88.4	92.4	61.7	90.7	87.0
	Continued HS	20	491	4.1	-	19.1	2.5	4.3
	Received GED	16	491	3.3	-	-	4.0	-
	Dropped Out	21	491	4.3	4.2	14.9	2.8	6.8
SABINE	Completion I	93	98	94.9	100.0	-	93.9	93.3
	Completion II	96	98	98.0	100.0	-	97.6	100.0
	Graduated	91	98	92.9	100.0	-	91.5	88.9
	Continued HS	-	98	-	-	-	-	-
	Received GED	-	98	-	-	-	-	-
	Dropped Out	-	98	-	-	-	-	-

Note. A dash (-) indicates data are not reported to protect student anonymity.
^aCompletion I consists of students who graduated or continued high school. Completion II consists of students who graduated, continued high school, or received GEDs.

Table 3
 Longitudinal Completion/Student Status Rates, Grades 9-12, by Student Group, Texas Public
 Schools, Class of 2003: County Listing

County	Final status ^a	Number	Number in class	Rate (%)				
				All students	Afr. Am.	His- panic	White	Econ. dis.
SAN AUGUSTINE	Completion I	109	112	97.3	97.6	-	97.0	96.9
	Completion II	109	112	97.3	97.6	-	97.0	96.9
	Graduated	104	112	92.9	97.6	-	89.6	90.8
	Continued HS	5	112	4.5	-	-	7.5	-
	Received GED	-	112	-	-	-	-	-
	Dropped Out	-	112	-	-	-	-	-
SAN JACINTO	Completion I	212	226	93.8	96.6	100.0	92.2	96.4
	Completion II	218	226	96.5	96.6	100.0	96.1	98.8
	Graduated	197	226	87.2	91.5	100.0	85.0	85.5
	Continued HS	15	226	6.6	-	-	7.2	10.8
	Received GED	6	226	2.7	-	-	3.9	-
	Dropped Out	8	226	3.5	-	-	3.9	-
SAN PATRICIO	Completion I	925	1,011	91.5	96.9	90.2	92.6	87.9
	Completion II	978	1,011	96.7	96.9	94.8	98.9	93.5
	Graduated	889	1,011	87.9	96.9	85.9	89.9	83.6
	Continued HS	36	1,011	3.6	-	4.2	2.7	4.2
	Received GED	53	1,011	5.2	-	4.6	6.3	5.6
	Dropped Out	33	1,011	3.3	-	5.2	1.1	6.5
SAN SABA	Completion I	60	64	93.8	-	100.0	91.7	96.2
	Completion II	61	64	95.3	-	100.0	93.8	96.2
	Graduated	58	64	90.6	-	93.8	89.6	88.5
	Continued HS	-	64	-	-	-	-	-
	Received GED	-	64	-	-	-	-	-
	Dropped Out	-	64	-	-	-	-	-
SCHLEICHER	Completion I	51	54	94.4	-	89.7	100.0	85.0
	Completion II	52	54	96.3	-	93.1	100.0	90.0
	Graduated	49	54	90.7	-	82.8	100.0	80.0
	Continued HS	-	54	-	-	-	-	-
	Received GED	-	54	-	-	-	-	-
	Dropped Out	-	54	-	-	-	-	-
SCURRY	Completion I	220	228	96.5	88.9	97.4	96.5	92.7
	Completion II	223	228	97.8	88.9	97.4	98.6	94.5
	Graduated	215	228	94.3	88.9	92.3	95.7	85.5
	Continued HS	5	228	2.2	-	-	-	-
	Received GED	-	228	-	-	-	-	-
	Dropped Out	5	228	2.2	-	-	-	-
SHACKELFORD	Completion I	47	51	92.2	-	100.0	90.5	94.7
	Completion II	51	51	100.0	-	100.0	100.0	100.0
	Graduated	46	51	90.2	-	100.0	88.1	94.7
	Continued HS	-	51	-	-	-	-	-
	Received GED	-	51	-	-	-	-	-
	Dropped Out	-	51	-	-	-	-	-
SHELBY	Completion I	266	289	92.0	95.3	93.1	90.2	92.7
	Completion II	274	289	94.8	95.3	93.1	94.8	94.5
	Graduated	256	289	88.6	90.6	89.7	87.3	88.1
	Continued HS	10	289	3.5	-	-	2.9	4.6
	Received GED	8	289	2.8	-	-	4.6	-
	Dropped Out	15	289	5.2	-	-	5.2	5.5
SHERMAN	Completion I	31	34	91.2	-	81.8	95.7	80.0
	Completion II	31	34	91.2	-	81.8	95.7	80.0
	Graduated	30	34	88.2	-	72.7	95.7	73.3
	Continued HS	-	34	-	-	-	-	-
	Received GED	-	34	-	-	-	-	-
	Dropped Out	-	34	-	-	-	-	-
SMITH	Completion I	1,871	2,052	91.2	91.1	85.8	92.4	89.7
	Completion II	1,956	2,052	95.3	92.8	89.1	97.6	93.1
	Graduated	1,768	2,052	86.2	84.5	70.8	90.2	79.8
	Continued HS	103	2,052	5.0	6.6	15.0	2.2	9.9
	Received GED	85	2,052	4.1	1.7	3.4	5.2	3.4
	Dropped Out	96	2,052	4.7	7.2	10.9	2.4	6.9

Note. A dash (-) indicates data are not reported to protect student anonymity.

^aCompletion I consists of students who graduated or continued high school. Completion II consists of students who graduated, continued high school, or received GEDs.

Table 3
 Longitudinal Completion/Student Status Rates, Grades 9-12, by Student Group, Texas Public
 Schools, Class of 2003: County Listing

County	Final status ^a	Number	Number in class	Rate (%)				
				All students	Afr. Am.	Hispanic	White	Econ. dis.
SOMERVELL	Completion I	155	161	96.3	-	89.7	97.7	86.1
	Completion II	158	161	98.1	-	93.1	99.2	91.7
	Graduated	147	161	91.3	-	82.8	93.0	72.2
	Continued HS	8	161	5.0	-	-	4.7	13.9
	Received GED	-	161	-	-	-	-	-
	Dropped Out	-	161	-	-	-	-	-
STARR	Completion I	749	888	84.3	-	84.4	-	85.1
	Completion II	758	888	85.4	-	85.4	-	86.3
	Graduated	661	888	74.4	-	74.4	-	76.2
	Continued HS	88	888	9.9	-	10.0	-	8.9
	Received GED	9	888	1.0	-	1.0	-	1.2
	Dropped Out	130	888	14.6	-	14.6	-	13.7
STEPHENS	Completion I	109	119	91.6	-	84.2	92.9	88.2
	Completion II	112	119	94.1	-	84.2	95.9	88.2
	Graduated	105	119	88.2	-	73.7	90.8	82.4
	Continued HS	-	119	-	-	-	-	-
	Received GED	-	119	-	-	-	-	-
	Dropped Out	7	119	5.9	-	-	-	-
STERLING	Completion I	29	29	100.0	-	100.0	100.0	100.0
	Completion II	29	29	100.0	-	100.0	100.0	100.0
	Graduated	29	29	100.0	-	100.0	100.0	100.0
	Continued HS	-	29	-	-	-	-	-
	Received GED	-	29	-	-	-	-	-
	Dropped Out	-	29	-	-	-	-	-
STONEWALL	Completion I	17	18	94.4	-	-	93.3	-
	Completion II	17	18	94.4	-	-	93.3	-
	Graduated	17	18	94.4	-	-	93.3	-
	Continued HS	-	18	-	-	-	-	-
	Received GED	-	18	-	-	-	-	-
	Dropped Out	-	18	-	-	-	-	-
SUTTON	Completion I	53	54	98.1	-	100.0	96.2	100.0
	Completion II	54	54	100.0	-	100.0	100.0	100.0
	Graduated	53	54	98.1	-	100.0	96.2	100.0
	Continued HS	-	54	-	-	-	-	-
	Received GED	-	54	-	-	-	-	-
	Dropped Out	-	54	-	-	-	-	-
SWISHER	Completion I	140	151	92.7	-	88.9	96.4	86.8
	Completion II	142	151	94.0	-	92.1	96.4	88.2
	Graduated	139	151	92.1	-	88.9	95.2	85.3
	Continued HS	-	151	-	-	-	-	-
	Received GED	-	151	-	-	-	-	-
	Dropped Out	9	151	6.0	-	7.9	-	11.8
TARRANT	Completion I	15,778	17,152	92.0	91.6	88.0	93.2	89.5
	Completion II	16,297	17,152	95.0	93.5	90.2	97.0	92.2
	Graduated	14,379	17,152	83.8	78.8	73.3	88.5	72.0
	Continued HS	1,399	17,152	8.2	12.9	14.7	4.6	17.5
	Received GED	519	17,152	3.0	1.8	2.2	3.8	2.7
	Dropped Out	855	17,152	5.0	6.5	9.8	3.0	7.8
TAYLOR	Completion I	1,504	1,640	91.7	90.2	90.2	92.2	87.7
	Completion II	1,594	1,640	97.2	94.7	94.7	98.2	94.9
	Graduated	1,422	1,640	86.7	79.7	80.7	89.3	78.0
	Continued HS	82	1,640	5.0	10.5	9.5	3.0	9.7
	Received GED	90	1,640	5.5	4.5	4.5	6.0	7.2
	Dropped Out	46	1,640	2.8	5.3	5.3	1.8	5.1
TERRELL	Completion I	23	24	95.8	-	100.0	90.0	100.0
	Completion II	23	24	95.8	-	100.0	90.0	100.0
	Graduated	22	24	91.7	-	100.0	80.0	100.0
	Continued HS	-	24	-	-	-	-	-
	Received GED	-	24	-	-	-	-	-
	Dropped Out	-	24	-	-	-	-	-

Note. A dash (-) indicates data are not reported to protect student anonymity.
^aCompletion I consists of students who graduated or continued high school. Completion II consists of students who graduated, continued high school, or received GEDs.

Table 3
 Longitudinal Completion/Student Status Rates, Grades 9-12, by Student Group, Texas Public
 Schools, Class of 2003: County Listing

County	Final status ^a	Number	Number in class	Rate (%)				
				All students	Afr. Am.	His- panic	White	Econ. dis.
TERRY	Completion I	172	178	96.6	100.0	97.1	97.1	97.2
	Completion II	174	178	97.8	100.0	97.1	100.0	97.2
	Graduated	164	178	92.1	100.0	89.4	97.1	91.5
	Continued HS	8	178	4.5	-	7.7	-	-
	Received GED	-	178	-	-	-	-	-
	Dropped Out	-	178	-	-	-	-	-
THROCKMORTON	Completion I	26	27	96.3	-	-	96.0	87.5
	Completion II	27	27	100.0	-	-	100.0	100.0
	Graduated	26	27	96.3	-	-	96.0	87.5
	Continued HS	-	27	-	-	-	-	-
	Received GED	-	27	-	-	-	-	-
	Dropped Out	-	27	-	-	-	-	-
TITUS	Completion I	326	347	93.9	94.9	96.4	92.8	93.3
	Completion II	340	347	98.0	97.4	97.6	98.2	97.1
	Graduated	317	347	91.4	94.9	86.7	92.3	89.5
	Continued HS	9	347	2.6	-	9.6	-	-
	Received GED	14	347	4.0	-	-	5.4	-
	Dropped Out	7	347	2.0	-	-	-	-
TOM GREEN	Completion I	1,176	1,310	89.8	94.2	85.8	91.9	84.1
	Completion II	1,247	1,310	95.2	97.1	91.1	97.8	92.0
	Graduated	1,079	1,310	82.4	79.7	75.3	87.0	71.2
	Continued HS	97	1,310	7.4	14.5	10.5	4.8	12.9
	Received GED	71	1,310	5.4	-	5.3	5.9	8.0
	Dropped Out	63	1,310	4.8	-	8.9	2.2	8.0
TRAVIS	Completion I	6,641	7,252	91.6	89.6	88.6	93.8	87.8
	Completion II	6,886	7,252	95.0	92.8	91.4	97.7	91.3
	Graduated	5,815	7,252	80.2	73.3	70.1	88.1	66.3
	Continued HS	826	7,252	11.4	16.3	18.5	5.7	21.5
	Received GED	245	7,252	3.4	3.1	2.8	3.9	3.6
	Dropped Out	366	7,252	5.0	7.2	8.6	2.3	8.7
TRINITY	Completion I	153	163	93.9	93.9	-	93.6	90.9
	Completion II	159	163	97.5	97.0	-	97.6	97.0
	Graduated	145	163	89.0	87.9	-	88.8	83.3
	Continued HS	8	163	4.9	-	-	4.8	7.6
	Received GED	6	163	3.7	-	-	4.0	-
	Dropped Out	-	163	-	-	-	-	-
TYLER	Completion I	247	264	93.6	95.3	83.3	93.3	93.9
	Completion II	257	264	97.3	95.3	100.0	97.6	95.1
	Graduated	241	264	91.3	90.7	83.3	91.9	89.0
	Continued HS	6	264	2.3	-	-	-	-
	Received GED	10	264	3.8	-	-	4.3	-
	Dropped Out	7	264	2.7	-	-	2.4	-
UPSHUR	Completion I	426	448	95.1	96.7	100.0	94.6	92.0
	Completion II	440	448	98.2	96.7	100.0	98.4	95.2
	Graduated	419	448	93.5	96.7	93.3	93.0	88.0
	Continued HS	7	448	1.6	-	-	1.6	4.0
	Received GED	14	448	3.1	-	-	3.8	-
	Dropped Out	8	448	1.8	-	-	1.6	4.8
UPTON	Completion I	64	66	97.0	-	100.0	94.3	100.0
	Completion II	65	66	98.5	-	100.0	97.1	100.0
	Graduated	63	66	95.5	-	96.4	94.3	95.5
	Continued HS	-	66	-	-	-	-	-
	Received GED	-	66	-	-	-	-	-
	Dropped Out	-	66	-	-	-	-	-
UVALDE	Completion I	387	431	89.8	-	91.4	84.7	90.3
	Completion II	407	431	94.4	-	93.0	98.2	92.6
	Graduated	349	431	81.0	-	80.6	82.0	76.9
	Continued HS	38	431	8.8	-	10.8	-	13.4
	Received GED	20	431	4.6	-	1.6	13.5	2.3
	Dropped Out	24	431	5.6	-	7.0	-	7.4

Note. A dash (-) indicates data are not reported to protect student anonymity.

^aCompletion I consists of students who graduated or continued high school. Completion II consists of students who graduated, continued high school, or received GEDs.

Table 3
 Longitudinal Completion/Student Status Rates, Grades 9-12, by Student Group, Texas Public
 Schools, Class of 2003: County Listing

County	Final status ^a	Number	Number in class	Rate (%)				
				All students	Afr. Am.	His- panic	White	Econ. dis.
VAL VERDE	Completion I	550	648	84.9	83.3	84.4	88.6	83.2
	Completion II	588	648	90.7	83.3	90.5	92.9	88.3
	Graduated	462	648	71.3	83.3	69.6	82.9	66.5
	Continued HS	88	648	13.6	-	14.8	-	16.8
	Received GED	38	648	5.9	-	6.2	-	5.1
	Dropped Out	60	648	9.3	-	9.5	7.1	11.7
VAN ZANDT	Completion I	611	657	93.0	91.7	88.4	93.3	92.0
	Completion II	646	657	98.3	95.8	95.3	98.6	97.3
	Graduated	584	657	88.9	75.0	86.0	89.7	85.3
	Continued HS	27	657	4.1	-	-	3.6	6.7
	Received GED	35	657	5.3	-	-	5.3	5.3
	Dropped Out	11	657	1.7	-	-	1.4	-
VICTORIA	Completion I	975	1,073	90.9	93.3	86.4	94.4	82.7
	Completion II	1,019	1,073	95.0	96.6	90.0	99.2	86.8
	Graduated	905	1,073	84.3	84.3	76.9	91.2	74.9
	Continued HS	70	1,073	6.5	9.0	9.5	3.2	7.8
	Received GED	44	1,073	4.1	-	3.6	4.8	4.1
	Dropped Out	54	1,073	5.0	-	10.0	-	13.2
WALKER	Completion I	471	598	78.8	83.3	64.8	80.5	63.6
	Completion II	586	598	98.0	98.1	97.8	98.3	97.4
	Graduated	453	598	75.8	78.8	59.3	78.8	59.2
	Continued HS	18	598	3.0	4.5	5.5	1.7	4.4
	Received GED	115	598	19.2	14.7	33.0	17.7	33.8
	Dropped Out	12	598	2.0	-	-	1.7	2.6
WALLER	Completion I	417	449	92.9	91.5	89.6	95.1	91.6
	Completion II	426	449	94.9	91.5	91.3	98.2	93.0
	Graduated	391	449	87.1	84.0	80.0	92.0	82.5
	Continued HS	26	449	5.8	7.5	9.6	3.1	9.1
	Received GED	9	449	2.0	-	-	3.1	-
	Dropped Out	23	449	5.1	8.5	8.7	-	7.0
WARD	Completion I	166	177	93.8	100.0	92.7	94.2	91.1
	Completion II	173	177	97.7	100.0	96.3	98.8	96.4
	Graduated	156	177	88.1	87.5	86.6	89.5	80.4
	Continued HS	10	177	5.6	-	6.1	-	10.7
	Received GED	7	177	4.0	-	-	-	-
	Dropped Out	-	177	-	-	-	-	-
WASHINGTON	Completion I	363	377	96.3	94.0	96.7	96.9	93.3
	Completion II	371	377	98.4	94.0	100.0	99.6	94.7
	Graduated	352	377	93.4	90.4	83.3	95.4	84.0
	Continued HS	11	377	2.9	-	-	-	9.3
	Received GED	8	377	2.1	-	-	2.7	-
	Dropped Out	6	377	1.6	6.0	-	-	-
WEBB	Completion I	2,723	2,906	93.7	100.0	93.5	100.0	93.4
	Completion II	2,769	2,906	95.3	100.0	95.1	100.0	94.9
	Graduated	2,460	2,906	84.7	100.0	84.3	94.0	82.9
	Continued HS	263	2,906	9.1	-	9.2	6.0	10.5
	Received GED	46	2,906	1.6	-	1.6	-	1.5
	Dropped Out	137	2,906	4.7	-	4.9	-	5.1
WHARTON	Completion I	626	642	97.5	97.2	97.1	97.8	97.0
	Completion II	637	642	99.2	97.2	99.0	100.0	98.8
	Graduated	602	642	93.8	87.7	92.4	96.6	87.5
	Continued HS	24	642	3.7	9.4	4.8	-	9.5
	Received GED	11	642	1.7	-	-	2.2	-
	Dropped Out	5	642	0.8	-	-	-	-
WHEELER	Completion I	82	85	96.5	-	100.0	95.6	100.0
	Completion II	84	85	98.8	-	100.0	98.5	100.0
	Graduated	80	85	94.1	-	100.0	92.6	92.3
	Continued HS	-	85	-	-	-	-	-
	Received GED	-	85	-	-	-	-	-
	Dropped Out	-	85	-	-	-	-	-

Note. A dash (-) indicates data are not reported to protect student anonymity.
^aCompletion I consists of students who graduated or continued high school. Completion II consists of students who graduated, continued high school, or received GEDs.

Table 3
 Longitudinal Completion/Student Status Rates, Grades 9-12, by Student Group, Texas Public
 Schools, Class of 2003: County Listing

County	Final status ^a	Number	Number in class	Rate (%)				
				All students	Afr. Am.	His- panic	White	Econ. dis.
WICHITA	Completion I	1,479	1,641	90.1	93.5	87.9	90.2	85.1
	Completion II	1,596	1,641	97.3	97.8	93.5	98.0	95.6
	Graduated	1,432	1,641	87.3	88.0	81.4	88.5	80.7
	Continued HS	47	1,641	2.9	5.4	6.5	1.8	4.4
	Received GED	117	1,641	7.1	4.3	5.6	7.8	10.6
	Dropped Out	45	1,641	2.7	-	6.5	2.0	4.4
WILBARGER	Completion I	172	219	78.5	93.3	75.0	78.0	69.6
	Completion II	216	219	98.6	100.0	98.3	98.6	98.7
	Graduated	169	219	77.2	93.3	73.3	76.6	67.1
	Continued HS	-	219	-	-	-	-	-
	Received GED	44	219	20.1	-	23.3	20.6	29.1
	Dropped Out	-	219	-	-	-	-	-
WILLACY	Completion I	283	332	85.2	-	84.6	100.0	85.1
	Completion II	293	332	88.3	-	87.7	100.0	87.7
	Graduated	244	332	73.5	-	73.3	84.6	71.6
	Continued HS	39	332	11.7	-	11.3	-	13.4
	Received GED	10	332	3.0	-	3.1	-	2.6
	Dropped Out	39	332	11.7	-	12.3	-	12.3
WILLIAMSON	Completion I	4,218	4,454	94.7	95.9	91.7	95.1	87.4
	Completion II	4,363	4,454	98.0	97.3	95.0	98.6	93.9
	Graduated	3,983	4,454	89.4	87.0	80.9	91.3	76.9
	Continued HS	235	4,454	5.3	8.9	10.9	3.9	10.5
	Received GED	145	4,454	3.3	-	3.3	3.5	6.5
	Dropped Out	91	4,454	2.0	2.7	5.0	1.4	6.1
WILSON	Completion I	480	514	93.4	100.0	92.3	93.9	87.5
	Completion II	493	514	95.9	100.0	93.8	97.3	89.0
	Graduated	455	514	88.5	88.9	85.2	90.8	79.4
	Continued HS	25	514	4.9	-	7.2	3.1	8.1
	Received GED	13	514	2.5	-	-	3.4	-
	Dropped Out	21	514	4.1	-	6.2	2.7	11.0
WINKLER	Completion I	116	118	98.3	-	98.2	98.3	100.0
	Completion II	116	118	98.3	-	98.2	98.3	100.0
	Graduated	115	118	97.5	-	98.2	96.6	97.1
	Continued HS	-	118	-	-	-	-	-
	Received GED	-	118	-	-	-	-	-
	Dropped Out	-	118	-	-	-	-	-
WISE	Completion I	611	643	95.0	100.0	94.4	95.0	93.4
	Completion II	626	643	97.4	100.0	95.5	97.6	96.7
	Graduated	586	643	91.1	83.3	88.8	91.6	80.2
	Continued HS	25	643	3.9	-	5.6	3.4	13.2
	Received GED	15	643	2.3	-	-	2.6	-
	Dropped Out	17	643	2.6	-	-	2.4	-
WOOD	Completion I	408	426	95.8	100.0	97.1	95.4	90.7
	Completion II	420	426	98.6	100.0	97.1	98.7	94.4
	Graduated	398	426	93.4	93.8	94.3	93.3	87.9
	Continued HS	10	426	2.3	-	-	2.1	-
	Received GED	12	426	2.8	-	-	3.2	-
	Dropped Out	6	426	1.4	-	-	1.3	5.6
YOAKUM	Completion I	137	143	95.8	-	95.0	96.7	96.4
	Completion II	139	143	97.2	-	96.3	98.4	98.2
	Graduated	135	143	94.4	-	93.8	95.1	92.7
	Continued HS	-	143	-	-	-	-	-
	Received GED	-	143	-	-	-	-	-
	Dropped Out	-	143	-	-	-	-	-
YOUNG	Completion I	239	243	98.4	-	94.1	99.0	94.7
	Completion II	241	243	99.2	-	97.1	99.5	97.4
	Graduated	221	243	90.9	-	79.4	92.6	68.4
	Continued HS	18	243	7.4	-	14.7	6.4	26.3
	Received GED	-	243	-	-	-	-	-
	Dropped Out	-	243	-	-	-	-	-

Note. A dash (-) indicates data are not reported to protect student anonymity.

^aCompletion I consists of students who graduated or continued high school. Completion II consists of students who graduated, continued high school, or received GEDs.

Table 3
 Longitudinal Completion/Student Status Rates, Grades 9-12, by Student Group, Texas Public
 Schools, Class of 2003: County Listing

County	Final status ^a	Number	Number in class	Rate (%)				
				All students	Afr. Am.	His- panic	White	Econ. dis.
ZAPATA	Completion I	185	208	88.9	-	88.9	88.9	87.2
	Completion II	187	208	89.9	-	89.4	100.0	88.4
	Graduated	179	208	86.1	-	85.9	88.9	83.7
	Continued HS	6	208	2.9	-	3.0	-	3.5
	Received GED	-	208	-	-	-	-	-
	Dropped Out	21	208	10.1	-	10.6	-	11.6
ZAVALA	Completion I	146	167	87.4	-	87.0	100.0	85.8
	Completion II	149	167	89.2	-	88.9	100.0	87.9
	Graduated	131	167	78.4	-	77.8	100.0	77.3
	Continued HS	15	167	9.0	-	9.3	-	8.5
	Received GED	-	167	-	-	-	-	-
	Dropped Out	18	167	10.8	-	11.1	-	12.1

Note. A dash (-) indicates data are not reported to protect student anonymity.
^aCompletion I consists of students who graduated or continued high school. Completion II consists of students who graduated, continued high school, or received GEDs.

Table 4
Longitudinal Completion/Student Status Cohort,
Grades 9-12, Texas Public Schools,
Class of 2003: County Listing

Table 4
 Longitudinal Completion/Student Status Cohort, Grades 9-12, Texas Public Schools, Class of 2003:
 County Listing

County	Number in class					Leavers	Data errors		Total in cohort
	Graduated	Continued HS ^a	Received GED ^b	Dropped out	Student ID errors		Under-reported students		
ANDERSON	503	20	7	16	104	10	13	673	
ANDREWS	242	-	-	-	42	-	-	294	
ANGELINA	938	87	17	35	216	49	29	1,371	
ARANSAS	218	9	12	8	57	19	-	325	
ARCHER	162	-	-	-	26	-	-	198	
ARMSTRONG	26	-	-	-	7	-	-	33	
ATASCOSA	509	26	10	16	88	11	11	671	
AUSTIN	367	10	-	5	77	7	-	472	
BAILLEY	74	-	-	5	25	-	-	108	
BANDERA	179	10	10	-	67	-	-	273	
BASTROP	648	48	10	44	150	79	23	1,002	
BAYLOR	49	-	-	-	6	-	-	59	
BEE	286	39	-	8	91	11	10	449	
BELL	2,581	162	115	113	1,153	52	100	4,276	
BEXAR	14,347	1,671	614	969	4,021	544	688	22,854	
BLANCO	104	-	-	-	16	5	-	133	
BORDEN	19	-	-	-	-	-	-	19	
BOSQUE	205	-	5	6	58	-	6	287	
BOWIE	998	30	39	33	367	22	38	1,527	
BRAZORIA	2,579	237	178	38	867	77	82	4,058	
BRAZOS	1,142	74	87	56	310	74	39	1,782	
BREWSTER	79	13	-	-	25	-	-	123	
BRISCOE	14	-	-	-	-	-	-	16	
BROOKS	108	5	-	-	13	14	-	144	
BROWN	416	24	24	7	116	22	5	614	
BURLESON	185	12	9	14	48	-	5	277	
BURNET	388	36	7	11	98	12	5	557	
CALDWELL	376	29	10	23	84	36	15	573	
CALHOUN	214	18	-	-	59	-	14	315	
CALLAHAN	198	8	6	7	34	-	-	260	
CAMERON	4,144	633	116	233	1,110	453	219	6,908	
CAMP	127	-	12	-	17	-	-	165	
CARSON	87	-	-	-	14	-	-	108	
CASS	444	7	16	-	82	7	9	567	
CASTRO	121	5	-	19	23	-	-	174	
CHAMBERS	335	8	7	5	65	20	7	447	
CHEROKEE	419	21	16	6	106	9	17	594	
CHILDRESS	79	-	-	-	18	-	-	102	
CLAY	138	-	-	-	28	-	-	171	
COCHRAN	87	-	-	5	11	-	-	108	
COKE	54	22	74	-	91	85	85	412	
COLEMAN	119	5	-	8	13	-	-	147	
COLLIN	5,557	235	260	73	1,259	54	81	7,519	
COLLINGSWORTH	45	-	-	-	9	-	-	56	
COLORADO	259	12	18	7	53	16	34	399	
COMAL	1,088	85	56	72	203	26	60	1,590	
COMANCHE	166	5	-	12	27	-	-	216	
CONCHO	27	-	-	-	6	-	-	36	
COOKE	354	7	18	7	106	14	6	512	
CORYELL	612	54	22	28	191	6	21	934	
COTTLE	29	-	-	-	-	-	-	34	
CRANE	71	7	-	-	-	-	-	82	
CROCKETT	68	-	-	-	10	-	-	78	
CROSBY	96	5	-	-	14	-	-	120	
CULBERSON	47	-	-	-	6	-	-	55	
DALLAM	97	-	-	-	34	-	-	140	
DALLAS	19,726	2,427	645	983	6,824	2,576	1,445	34,626	
DAWSON	203	7	10	9	18	-	-	250	
DEAF SMITH	260	9	12	26	48	5	-	361	
DELTA	67	-	-	-	15	-	-	88	

Note. A dash (-) indicates data are not reported to protect student anonymity.
^aHigh school. ^bGeneral Educational Development certificate.

Table 4
 Longitudinal Completion/Student Status Cohort, Grades 9-12, Texas Public Schools, Class of 2003:
 County Listing

County	Number in class					Leavers	Data errors		Total in cohort
	Graduated	Continued HS ^a	Received GED ^b	Dropped out	Student ID errors		Under-reported students		
DENTON	4,270	225	182	96	992	218	197	6,180	
DEWITT	337	27	14	11	66	-	13	472	
DICKENS	28	-	-	-	-	-	-	30	
DIMITT	143	5	6	15	36	8	-	215	
DONLEY	52	-	-	-	6	-	-	60	
DUVAL	155	-	6	7	33	15	-	222	
EASTLAND	224	20	20	6	63	-	7	341	
ECTOR	1,322	227	46	187	408	34	47	2,271	
EDWARDS	53	-	-	-	8	-	-	64	
EL PASO	8,183	1,403	231	529	2,806	348	299	13,799	
ELLIS	1,574	63	43	43	399	32	29	2,183	
ERATH	294	11	5	10	58	11	6	395	
FALLS	184	7	-	11	35	-	8	249	
FANNIN	299	12	-	8	74	8	9	413	
FAYETTE	262	13	11	8	47	-	5	346	
FISHER	50	-	-	-	7	-	-	58	
FLOYD	108	6	-	5	23	-	-	144	
FOARD	29	-	-	-	5	-	-	36	
FORT BEND	4,928	335	146	125	977	75	82	6,668	
FRANKLIN	95	-	-	-	27	-	-	131	
FREESTONE	213	9	-	-	57	-	7	297	
FRIO	164	12	8	11	43	25	-	267	
GAINES	185	6	12	9	37	-	-	252	
GALVESTON	3,718	303	183	167	1,297	207	149	6,024	
GARZA	73	-	5	-	21	-	8	114	
GILLESPIE	309	6	9	-	35	-	-	361	
GLASSCOCK	29	-	-	-	-	-	-	32	
GOLIAD	97	-	-	-	11	-	-	111	
GONZALES	232	12	12	-	65	8	8	340	
GRAY	263	19	16	18	46	-	9	375	
GRAYSON	1,256	54	55	41	376	51	60	1,893	
GREGG	1,316	103	57	64	371	43	53	2,007	
GRIMES	243	8	17	-	61	5	7	345	
GUADALUPE	1,053	78	27	37	219	27	28	1,469	
HALE	434	33	12	49	110	-	6	645	
HALL	51	-	-	-	9	-	-	65	
HAMILTON	106	-	-	-	15	-	-	131	
HANSFORD	75	-	-	-	10	-	6	96	
HARDEMAN	60	-	-	-	13	-	-	76	
HARDIN	623	15	13	17	152	60	14	894	
HARRIS	32,457	4,258	1,271	2,756	10,456	2,521	2,236	55,955	
HARRISON	769	42	39	24	216	28	34	1,152	
HARTLEY	28	-	-	-	7	-	-	36	
HASKELL	94	-	-	-	7	-	-	106	
HAYS	1,258	135	46	41	254	27	51	1,812	
HEMPHILL	60	-	21	-	33	8	6	133	
HENDERSON	607	21	19	32	182	50	26	937	
HIDALGO	6,695	1,084	149	498	2,283	294	319	11,322	
HILL	387	15	8	15	95	13	16	549	
HOCKLEY	315	15	8	10	57	-	-	408	
HOOD	427	29	35	27	98	37	10	663	
HOPKINS	404	12	10	8	85	20	23	562	
HOUSTON	252	7	7	7	56	7	8	344	
HOWARD	300	22	19	15	117	-	13	488	
HUDSPETH	55	-	-	5	16	-	-	80	
HUNT	833	76	37	56	215	37	49	1,303	
HUTCHINSON	303	10	7	12	79	-	8	420	
IRION	35	-	-	-	-	-	-	39	
JACK	110	6	-	-	24	6	-	155	
JACKSON	210	8	11	-	43	-	-	283	

Note. A dash (-) indicates data are not reported to protect student anonymity.
^aHigh school. ^bGeneral Educational Development certificate.

Table 4
 Longitudinal Completion/Student Status Cohort, Grades 9-12, Texas Public Schools, Class of 2003:
 County Listing

County	Number in class					Leavers	Data errors		Total in cohort
	Graduated	Continued HS ^a	Received GED ^b	Dropped out	Student ID errors		Under-reported students		
JASPER	465	9	-	21	93	41	18	651	
JEFF DAVIS	39	-	8	-	16	-	5	74	
JEFFERSON	2,363	202	85	180	663	177	112	3,782	
JIM HOGG	81	-	-	-	17	-	-	104	
JIM WELLS	474	37	36	25	155	9	16	752	
JOHNSON	1,523	90	47	50	395	123	120	2,348	
JONES	206	-	7	5	38	-	-	264	
KARNES	166	17	5	6	25	-	-	222	
KAUFMAN	1,034	51	29	24	320	101	51	1,610	
KENDALL	413	7	21	6	79	-	10	538	
KENT	14	-	-	-	-	-	-	15	
KERR	429	38	42	17	144	35	27	732	
KIMBLE	42	-	-	-	8	-	-	58	
KING	9	-	-	-	-	-	-	10	
KINNEY	47	-	-	-	12	-	-	65	
KLEBERG	399	34	10	30	55	13	9	550	
KNOX	72	-	-	-	12	-	-	90	
LA SALLE	80	6	7	-	21	28	-	147	
LAMAR	518	16	19	6	163	8	21	751	
LAMB	225	-	6	9	38	-	6	288	
LAMPASAS	239	10	16	6	61	14	14	360	
LAVACA	147	-	7	-	12	-	-	173	
LEE	221	5	6	-	28	22	6	289	
LEON	193	8	-	8	42	12	-	270	
LIBERTY	796	56	25	40	485	49	39	1,490	
LIMESTONE	267	7	5	11	53	30	14	387	
LIPSCOMB	53	-	-	-	8	-	-	67	
LIVE OAK	70	6	6	9	14	-	46	153	
LLANO	104	-	-	5	36	-	5	156	
LUBBOCK	2,623	172	75	149	576	33	99	3,727	
LYNN	119	-	-	-	8	-	-	135	
MADISON	131	-	9	-	41	-	5	192	
MARION	93	-	-	-	27	10	-	142	
MARTIN	65	-	-	-	13	-	-	85	
MASON	48	-	-	-	5	-	-	57	
MATAGORDA	458	13	14	24	106	10	17	642	
MAVERICK	514	97	26	63	207	5	19	931	
MCCULLOCH	112	-	-	-	19	-	-	140	
MCLENNAN	2,286	180	104	108	505	95	103	3,381	
MCMULLEN	13	-	-	-	-	-	-	15	
MEDINA	522	35	18	21	98	34	24	752	
MENARD	36	-	-	-	9	-	-	46	
MIDLAND	1,315	145	45	101	479	95	75	2,255	
MILAM	329	17	10	9	70	23	15	473	
MILLS	54	-	-	-	7	-	7	75	
MITCHELL	100	-	-	-	21	-	-	134	
MONTAGUE	206	8	9	10	63	-	10	308	
MONTGOMERY	3,617	215	196	106	1,007	165	123	5,429	
MOORE	273	7	10	6	75	-	5	379	
MORRIS	145	-	10	9	39	-	7	214	
MOTLEY	13	-	-	-	-	-	-	15	
NACOGDOCHES	600	34	23	33	137	22	13	862	
NAVARRO	460	30	25	39	181	14	25	774	
NEWTON	142	-	-	-	46	5	10	211	
NOLAN	217	5	8	-	48	-	11	293	
NUECES	3,316	347	170	140	989	342	183	5,487	
OCHILTREE	144	5	-	-	22	-	8	185	
OLDHAM	71	-	-	-	26	-	-	103	
ORANGE	1,030	42	41	29	279	22	30	1,473	
PALO PINTO	281	12	13	9	98	9	9	431	

Note. A dash (-) indicates data are not reported to protect student anonymity.
^aHigh school. ^bGeneral Educational Development certificate.

Table 4
 Longitudinal Completion/Student Status Cohort, Grades 9-12, Texas Public Schools, Class of 2003:
 County Listing

County	Number in class					Leavers	Data errors		Total in cohort
	Graduated	Continued HS ^a	Received GED ^b	Dropped out	Student ID errors		Under-reported students		
PANOLA	258	22	13	15	43	7	22	380	
PARKER	1,102	29	51	30	241	45	60	1,558	
PARMER	149	-	-	-	44	-	-	204	
PECOS	226	9	31	11	43	6	12	338	
POLK	384	19	16	14	142	38	14	627	
POTTER	1,667	90	96	91	705	8	46	2,703	
PRESIDIO	105	8	-	20	42	-	-	180	
RAINS	92	5	-	-	20	6	15	143	
RANDALL	481	12	54	16	123	15	27	728	
REAGAN	74	-	-	-	6	-	-	80	
REAL	21	-	-	-	-	-	-	31	
RED RIVER	161	6	7	5	44	-	6	230	
REEVES	175	-	8	6	48	-	-	247	
REFUGIO	89	5	-	-	20	-	5	126	
ROBERTS	10	-	-	-	-	-	-	15	
ROBERTSON	191	-	10	5	38	6	13	264	
ROCKWALL	648	37	19	23	131	9	61	928	
RUNNELS	175	-	-	7	28	-	-	218	
RUSK	434	20	16	21	118	17	23	649	
SABINE	91	-	-	-	26	-	-	131	
SAN AUGUSTINE	104	5	-	-	18	-	9	140	
SAN JACINTO	197	15	6	8	73	10	18	327	
SAN PATRICIO	889	36	53	33	275	25	77	1,388	
SAN SABA	58	-	-	-	15	-	-	82	
SCHLEICHER	49	-	-	-	-	-	-	59	
SCURRY	215	5	-	5	49	12	6	295	
SHACKELFORD	46	-	-	-	5	-	5	61	
SHELBY	256	10	8	15	63	14	17	383	
SHERMAN	30	-	-	-	5	-	32	71	
SMITH	1,768	103	85	96	499	65	98	2,714	
SOMERVELL	147	8	-	-	34	10	-	209	
STARR	661	88	9	130	208	23	20	1,139	
STEPHENS	105	-	-	7	19	-	-	142	
STERLING	29	-	-	-	-	-	-	31	
STONEWALL	17	-	-	-	-	-	-	20	
SUTTON	53	-	-	-	8	-	-	64	
SWISHER	139	-	-	9	11	-	-	165	
TARRANT	14,379	1,399	519	855	4,412	1,148	803	23,515	
TAYLOR	1,422	82	90	46	447	17	69	2,173	
TERRELL	22	-	-	-	7	-	-	31	
TERRY	164	8	-	-	43	-	6	227	
THROCKMORTON	26	-	-	-	-	-	-	30	
TITUS	317	9	14	7	87	5	6	445	
TOM GREEN	1,079	97	71	63	277	17	44	1,648	
TRAVIS	5,815	826	245	366	1,648	864	450	10,214	
TRINITY	145	8	6	-	50	9	14	236	
TYLER	241	6	10	7	82	13	14	373	
UPSHUR	419	7	14	8	82	10	19	559	
UPTON	63	-	-	-	9	-	-	76	
UVALDE	349	38	20	24	79	24	29	563	
VAL VERDE	462	88	38	60	145	-	25	821	
VAN ZANDT	584	27	35	11	228	44	58	987	
VICTORIA	905	70	44	54	232	87	36	1,428	
WALKER	453	18	115	12	193	13	53	857	
WALLER	391	26	9	23	113	16	18	596	
WARD	156	10	7	-	47	-	7	231	
WASHINGTON	352	11	8	6	101	21	5	504	
WEBB	2,460	263	46	137	606	128	78	3,718	
WHARTON	602	24	11	5	110	-	17	771	
WHEELER	80	-	-	-	15	-	-	104	

Note. A dash (-) indicates data are not reported to protect student anonymity.
^aHigh school. ^bGeneral Educational Development certificate.

Table 4
 Longitudinal Completion/Student Status Cohort, Grades 9-12, Texas Public Schools, Class of 2003:
 County Listing

County	Number in class				Leavers	Data errors		Total in cohort
	Graduated	Continued HS ^a	Received GED ^b	Dropped out		Student ID errors	Under-reported students	
WICHITA	1,432	47	117	45	377	39	38	2,095
WILBARGER	169	-	44	-	77	21	27	344
WILLACY	244	39	10	39	37	5	7	381
WILLIAMSON	3,983	235	145	91	845	93	119	5,511
WILSON	455	25	13	21	72	-	9	598
WINKLER	115	-	-	-	30	-	-	151
WISE	586	25	15	17	111	46	30	830
WOOD	398	10	12	6	117	21	14	578
YOAKUM	135	-	-	-	27	-	-	173
YOUNG	221	18	-	-	65	-	8	317
ZAPATA	179	6	-	21	20	-	6	237
ZAVALA	131	15	-	18	35	23	-	229

Note. A dash (-) indicates data are not reported to protect student anonymity.
^aHigh school. ^bGeneral Educational Development certificate.

Notes on Tables 1-4

All Students

All students reported is a cumulative total of students served at the campus or in the district, county, or state during the school year.

Class

A subset of a Grade 9 cohort (see **Cohort**), called a class, is used to calculate longitudinal student status rates. A class consists of members of a Grade 9 cohort less those who transferred out of the Texas public school system or could not be tracked. Longitudinal rates are based on the final statuses of students; therefore, only students in the cohort to whom final statuses are assigned are included as members of the class. Students who transfer out of the Texas public school system are removed from the count of students in the class. The four possible final statuses are: graduated, continued high school, received a General Educational Development (GED) certificate, or dropped out. A class is identified by a graduation year. For example, members of the class of 2003 are identified as students who attended Grade 9 for the first time in the 1999-00 school year and are expected to have graduated in spring 2003.

Cohort

To analyze student progress through high school, a cohort of students is tracked over five years, from the time they entered Grade 9 in the Texas public school system until the fall following their anticipated graduation date. A cohort is defined as the group of students who began Grade 9 for the first time in the same school year plus all students who transferred into the Texas public school system on grade level during the next four years. The final status of each student is determined the year graduation was expected. The four possible final statuses are: graduated, continued high school, received a General Educational Development (GED) certificate, or dropped out. Each cohort is identified by the starting grade and anticipated year of graduation. For example, members of the class of 2003 Grade 9 cohort were identified as students who attended Grade 9 for the first time in the 1999-00 school year and were anticipated to graduate in spring 2003.

Continuing Student

A continuing student is one who was enrolled in a Texas public school in the fall of the school year following expected graduation.

Dropout

Dropouts are defined and counted according to the *2003-2004 Public Education Information Management System Addendum Version Data Standards* (TEA, 2003) and *Secondary School Completion and Dropouts in Texas Public Schools, 2002-03* (TEA, 2004a). A student who dropped out but later returned is counted as a graduate, GED recipient, or continuing student—not as a dropout.

Economically Disadvantaged

The number of students eligible for free or reduced-price lunch or eligible for other public assistance as defined in the *2003-2004 Public Education Information Management System Addendum Version Data Standards* (TEA, 2003) is used as a proxy for the number of economically disadvantaged students. Eligibility for free or reduced-price lunch or other public assistance is reported for each student at the time of enrollment.

Ethnicity/Race

Ethnicity/race is one of the demographic characteristics reported for each student at the time of enrollment.

GED Recipient

A GED recipient is a student awarded a GED certificate.

Graduate

A graduate is a student awarded a high school diploma by a Texas public school.

Leavers

A leaver is a student reported by a district as having left school without graduating or dropping out. Leavers are defined according to the *2003-2004 Public Education Information Management System Addendum Version Data Standards* (TEA, 2003).

Student Identification Errors

Student identification errors are student records submitted to the agency with problematic identification information. The unique identifying information of student records permits year-to-year tracking of students. Student identification errors prevent tracking.

Underreported Students

An underreported student is one who was reported in attendance but for whom neither re-enrollment nor leaver information was reported subsequently.

Figure 1
Comparing Annual and Longitudinal Dropout Counts
at the District or Campus Level

Figure 1
Comparing Annual and Longitudinal Dropout Counts at the District or Campus Level

This chart demonstrates how annual counts of official dropouts are related to the number of dropouts in the longitudinal rate at the district or campus level. The numbers provided in this chart are for illustration only. See facing page for a detailed explanation of each element in the chart.

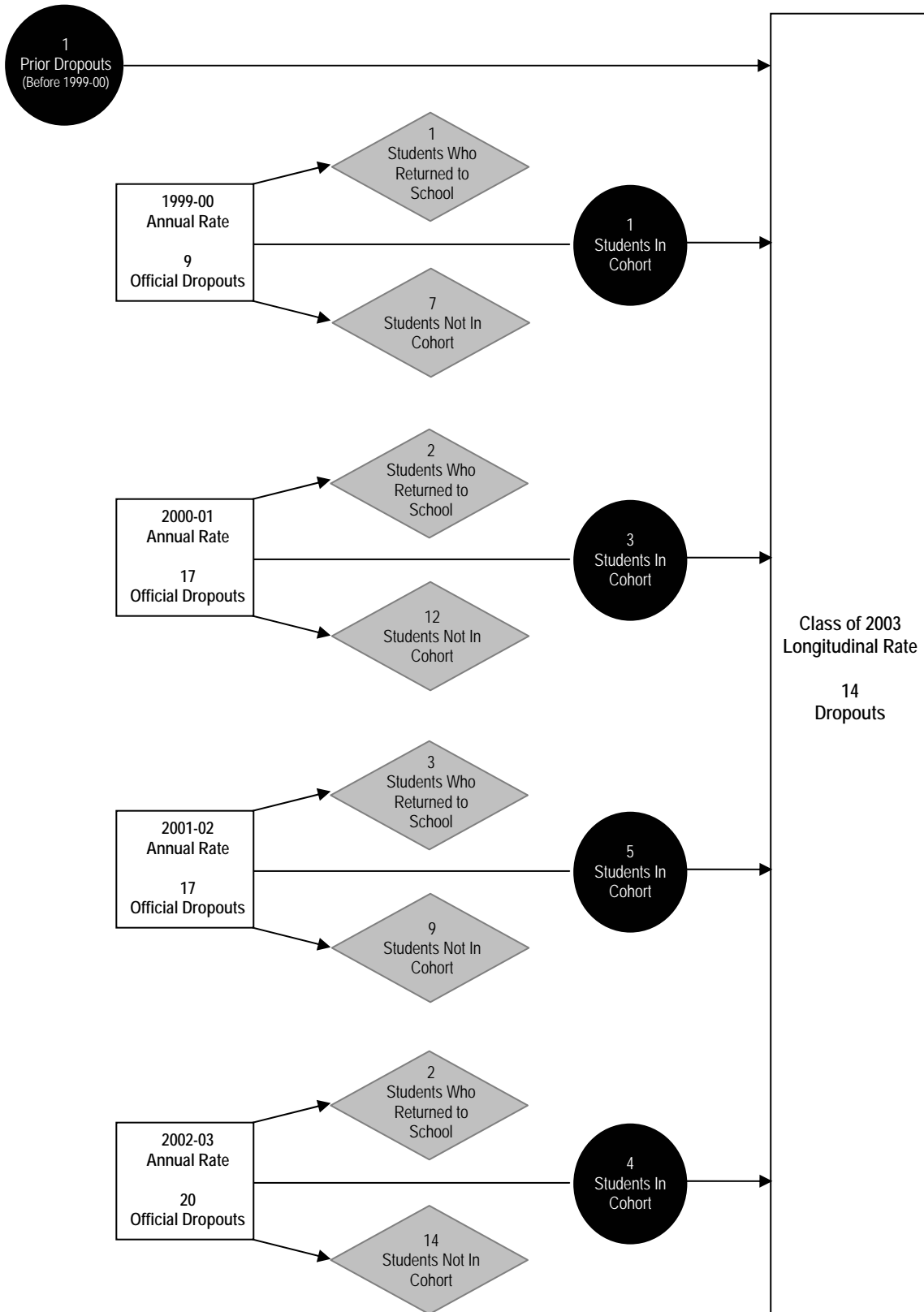
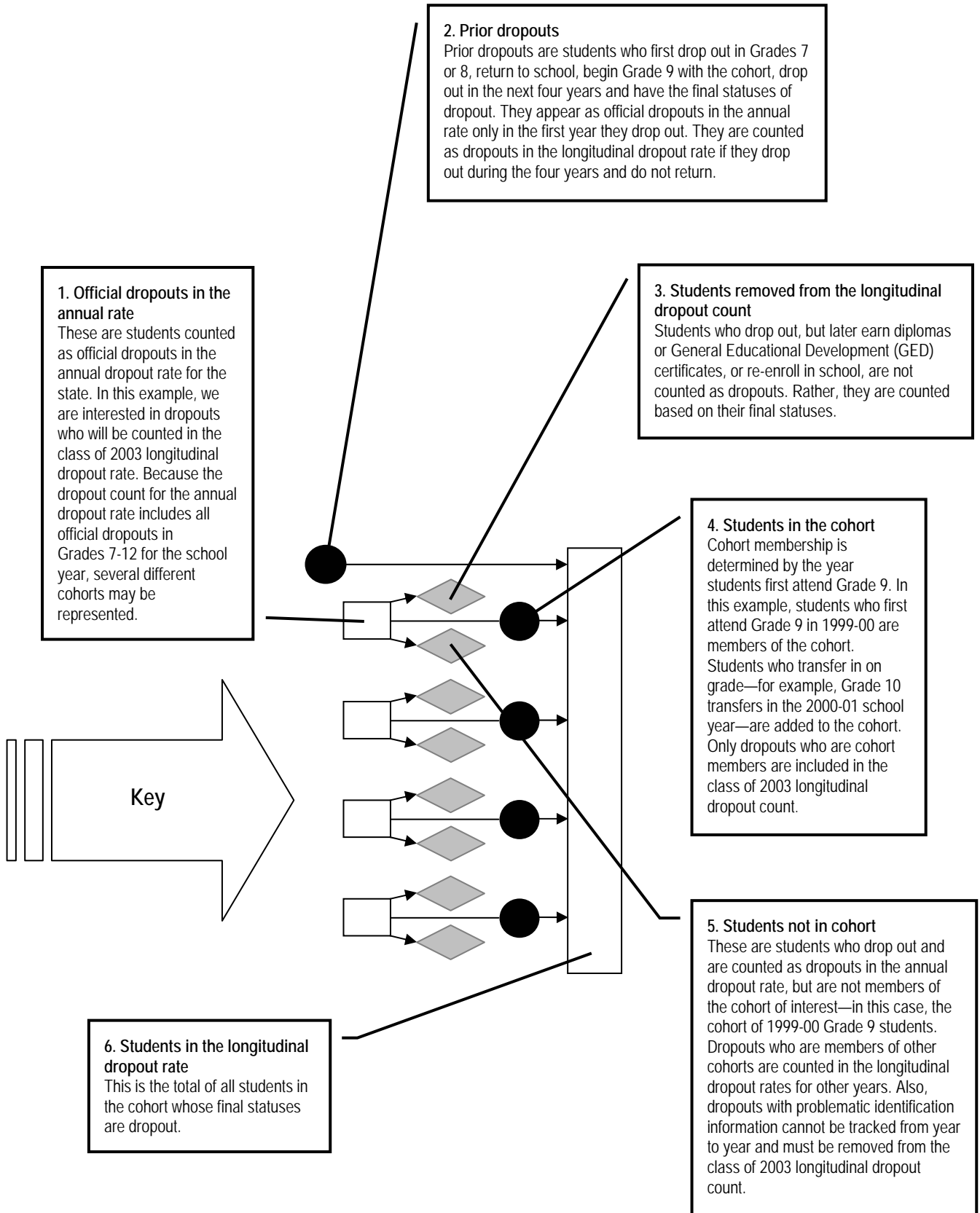


Figure 1 (continued)
Comparing Annual and Longitudinal Dropout Counts at the District or Campus Level



References

Texas Education Agency. (2003). *2003-2004 Public Education Information Management System addendum version data standards*. Retrieved June 4, 2004, from <http://www.tea.state.tx.us/peims/standards/0304/index.html>

Texas Education Agency. (2004a). *Secondary school completion and dropouts in Texas public schools, 2002-03*. (Document No. GE04 601 08). Austin, TX: Author.

Texas Education Agency. (2004b). *Secondary school completion and dropouts in Texas public schools, 2002-03: District and campus supplement*. (Document No. GE04 601 10). Austin, TX: Author.

Texas Education Agency. (2004c). *Secondary school completion and dropouts in Texas public schools, 2002-03: District supplement*. (Document No. GE04 601 09). Austin, TX: Author.

Texas Education Agency Publication Order Form

Purchaser name _____ Date _____

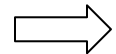
Send to (name, if different) _____

Address _____

City _____ State ____ Zip _____

Publications in this Series						
Current report	Available in PDF*	Quantity	Price per copy	Tax exempt only		Cost
				Quantity	Price per copy	
<i>GE04 601 08</i> Secondary School Completion and Dropouts in Texas Public Schools, 2002-03	Yes	_____	\$17.00	_____	\$16.00	_____
<i>GE04 601 09</i> Secondary School Completion and Dropouts in Texas Public Schools, 2002-03: District Supplement	Yes	_____	\$32.00	_____	\$30.00	_____
<i>GE04 601 10</i> Secondary School Completion and Dropouts in Texas Public Schools, 2002-03: District and Campus Supplement	Yes	_____	\$49.00	_____	\$46.00	_____
<i>GE04 601 11</i> Secondary School Completion and Dropouts in Texas Public Schools, 2002-03: County Supplement	Yes	_____	\$12.00	_____	\$11.00	_____
<small>*Copy of report can be downloaded and printed from http://www.tea.state.tx.us/research/.</small>						Subtotal _____ <small>(from following pages)</small>
						Total _____
<i>Price includes postage, handling, and applicable state tax. Make check or money order payable to Texas Education Agency.</i>						
For publication inquiries and purchase orders [†] send to:			If you are mailing a check or money order, remit this form with payment to:			
Texas Education Agency Publications Distribution 1701 North Congress Avenue Austin, Texas 78701-1494			Texas Education Agency Publications Distribution P.O. Box 13817 Austin, Texas 78711-3817			
<small>[†]Purchase orders are accepted only from Texas educational institutions and government agencies.</small>						

See following pages for publications on related topics



**Publications in this Series and
on Related Topics from Accountability Research**
(Note: Quantities are limited)

Publication number and title	Available in PDF*	Quantity	Price per copy	Tax exempt only		Cost
				Quantity	Price per copy	
Previous years' reports						
<i>GE03 601 04</i> Secondary School Completion and Dropouts in Texas Public Schools, 2001-02	Yes	_____	\$16.00	_____	\$15.00	_____
<i>GE03 601 05</i> Secondary School Completion and Dropouts in Texas Public Schools, 2001-02: Supplemental District Data	Yes	_____	\$32.00	_____	\$30.00	_____
<i>GE03 601 06</i> Secondary School Completion and Dropouts in Texas Public Schools, 2001-02: District and Campus Listings	Yes	_____	\$49.00	_____	\$46.00	_____
<i>GE03 601 07</i> Secondary School Completion and Dropouts in Texas Public Schools, 2001-02: County Listings	Yes	_____	\$12.00	_____	\$11.00	_____
<i>GE02 601 05</i> Secondary School Completion and Dropouts in Texas Public Schools, 2000-01	Yes	_____	\$16.00	_____	\$15.00	_____
<i>GE02 601 06</i> Secondary School Completion and Dropouts in Texas Public Schools, 2000-01: Supplemental District Data	Yes	_____	\$32.00	_____	\$30.00	_____
<i>GE02 601 07</i> Secondary School Completion and Dropouts in Texas Public Schools, 2000-01: District and Campus Listings	Yes	_____	\$49.00	_____	\$46.00	_____
<i>GE02 601 08</i> Secondary School Completion and Dropouts in Texas Public Schools, 2000-01: County Listings	Yes	_____	\$12.00	_____	\$11.00	_____
<i>GE03 601 04</i> Secondary School Completion and Dropouts in Texas Public Schools, 2000-01: National Center for Education Statistics District Dropout Counts and Rates	Yes	_____	\$14.00	_____	\$13.00	_____
<i>GE01 601 09</i> Secondary School Completion and Dropouts in Texas Public Schools, 1999-00	Yes	_____	\$14.50	_____	\$13.00	_____
<i>GE01 601 10</i> Secondary School Completion and Dropouts in Texas Public Schools, 1999-00: Supplemental District Data	Yes	_____	\$30.00	_____	\$28.00	_____
<i>GE01 601 11</i> Secondary School Completion and Dropouts in Texas Public Schools, 1999-00: District and Campus Listings	Yes	_____	\$47.50	_____	\$44.00	_____

*Copy of report can be downloaded and printed from <http://www.tea.state.tx.us/research/>.

**Publications in this Series and
on Related Topics from Accountability Research**
(Note: Quantities are limited)

Publication number and title	Available in PDF*	Quantity	Price per copy	Tax exempt only		Cost
				Quantity	Price per copy	
<i>GE01 601 12</i> Secondary School Completion and Dropouts in Texas Public Schools, 1999-00: County Listings	Yes	_____	\$22.50	_____	\$21.00	_____
<i>GE03 601 02</i> Secondary School Completion and Dropouts in Texas Public Schools, 1999-00: National Center for Education Statistics State and District Dropout Counts and Rates	Yes	_____	\$14.00	_____	\$13.00	_____
<i>GE01 601 02</i> Secondary School Completion and Dropouts in Texas Public Schools, 1998-99	Yes	_____	\$12.50	_____	\$11.50	_____
<i>GE01 601 03</i> Secondary School Completion and Dropouts in Texas Public Schools, 1998-99: Supplemental District Data	Yes	_____	\$26.50	_____	\$24.50	_____
<i>GE01 601 04</i> Secondary School Completion and Dropouts in Texas Public Schools, 1998-99: District and Campus Listings	Yes	_____	\$34.00	_____	\$31.00	_____
<i>GE01 601 05</i> Secondary School Completion and Dropouts in Texas Public Schools, 1998-99: County, District and Campus Listings	Yes	_____	\$43.50	_____	\$40.00	_____
<i>GE01 600 02</i> Dropout Study: A Report to the 77th Texas Legislature	Yes	_____	No charge, limited quantity	_____	No charge, limited quantity	_____
<i>GE9 601 03</i> 1997-98 Report on Public School Dropouts	Yes	_____	\$10.75	_____	\$10.00	_____
<i>GE8 601 05</i> 1996-97 Report on Public School Dropouts	Yes	_____	\$9.50	_____	\$8.50	_____
<i>GE7 601 08</i> 1995-96 Report on Public School Dropouts	No	_____	\$9.00	_____	\$8.00	_____
<i>GE6 601 08</i> 1994-95 Report on Public School Dropouts	No	_____	\$6.00	_____	\$6.00	_____
<i>GE6 601 01</i> 1993-94 Report on Public School Dropouts	No	_____	\$2.00	_____	\$2.00	_____
<i>GE5 601 09</i> 1992-93 Report on Public School Dropouts	No	_____	\$1.00	_____	\$1.00	_____
Retention						
<i>GE04 601 03</i> Grade-Level Retention in Texas Public Schools, 2001-02	Yes	_____	\$20.00	_____	\$19.00	_____
<i>GE02 601 09</i> Grade-Level Retention in Texas Public Schools, 2000-01	Yes	_____	\$19.00	_____	\$18.00	_____

*Copy of report can be downloaded and printed from <http://www.tea.state.tx.us/research/>.

**Publications in this Series and
on Related Topics from Accountability Research**

(Note: Quantities are limited)

Publication number and title	Available in PDF*	Quantity	Price per copy	Tax exempt only		Cost
				Quantity	Price per copy	
Retention						
<i>GE02 601 03</i> Grade Level Retention in Texas Public Schools, 1999-00	Yes	_____	\$19.00	_____	\$18.00	_____
<i>GE01 601 07</i> Grade Level Retention in Texas Public Schools, 1998-99	Yes	_____	\$17.00	_____	\$16.00	_____
<i>GE9 601 02</i> 1997-98 Report on Grade Level Retention of Texas Students	Yes	_____	\$9.50	_____	\$8.75	_____
<i>GE8 601 07</i> 1996-97 Report on Grade Level Retention of Texas Students	Yes	_____	\$10.00	_____	\$9.25	_____
<i>GE8 601 01</i> 1995-96 Report on Grade Level Retention of Texas Students	No	_____	\$11.00	_____	\$10.00	_____
<i>GE7 601 01</i> 1994-95 Report on Grade Level Retention of Texas Students	No	_____	\$6.00	_____	\$6.00	_____
<i>GE5 601 12</i> Report on Grade Level Retention of Texas Students, 1992-93 and 1993-94	No	_____	\$1.00	_____	\$1.00	_____
Subtotal						_____

*Copy of report can be downloaded and printed from <http://www.tea.state.tx.us/research/>.

Compliance Statement

Title VI, Civil Rights Act of 1964, the Modified Court Order, Civil Action 5281, Federal District Court, Eastern District of Texas, Tyler Division.

Reviews of local education agencies pertaining to compliance with Title VI Civil Rights Act of 1964 and with specific requirements of the Modified Court Order, Civil Action No. 5281, Federal District Court, Eastern District of Texas, Tyler Division are conducted periodically by staff representatives of the Texas Education Agency. These reviews cover at least the following policies and practices:

1. acceptance policies on student transfers from other school districts;
2. operation of school bus routes or runs on a nonsegregated basis;
3. nondiscrimination in extracurricular activities and the use of school facilities;
4. nondiscriminatory practices in the hiring, assigning, promoting, paying, demoting, reassigning, or dismissing of faculty and staff members who work with children;
5. enrollment and assignment of students without discrimination on the basis of race, color, or national origin;
6. nondiscriminatory practices relating to the use of a student's first language; and
7. evidence of published procedures for hearing complaints and grievances.

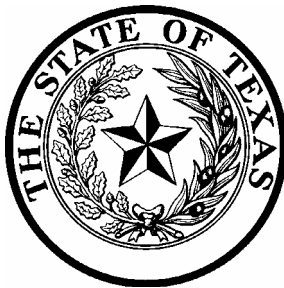
In addition to conducting reviews, the Texas Education Agency staff representatives check complaints of discrimination made by a citizen or citizens residing in a school district where it is alleged discriminatory practices have occurred or are occurring.

Where a violation of Title VI of the Civil Rights Act is found, the findings are reported to the Office for Civil Rights, U.S. Department of Education.

If there is a direct violation of the Court Order in Civil Action No. 5281 that cannot be cleared through negotiation, the sanctions required by the Court Order are applied.

Title VII, Civil Rights Act of 1964 as Amended by the Equal Employment Opportunity Act of 1972; Executive Orders 11246 and 11375; Equal Pay Act of 1964; Title IX, Education Amendments; Rehabilitation Act of 1973 as Amended; 1974 Amendments to the Wage-Hour Law Expanding the Age Discrimination in Employment Act of 1967; Vietnam Era Veterans Readjustment Assistance Act of 1972 as Amended; Immigration Reform and Control Act of 1986; Americans With Disabilities Act of 1990; and the Civil Rights Act of 1991.

The Texas Education Agency shall comply fully with the nondiscrimination provisions of all federal and state laws, rules, and regulations by assuring that no person shall be excluded from consideration for recruitment, selection, appointment, training, promotion, retention, or any other personnel action, or be denied any benefits or participation in any educational programs or activities which it operates on the grounds of race, religion, color, national origin, sex, disability, age, or veteran status (except where age, sex, or disability constitutes a bona fide occupational qualification necessary to proper and efficient administration). The Texas Education Agency is an Equal Opportunity/Affirmative Action employer.



**Texas Education Agency
1701 North Congress Avenue
Austin, Texas 78701-1494**

**Document No. GE04 601 11
August 2004**