

# SUCCESS FOR ALL LEARNERS

## In-District Partnership Programs



# In-District Partnership Programs

The district provides the space. SESI provides the staff and model.

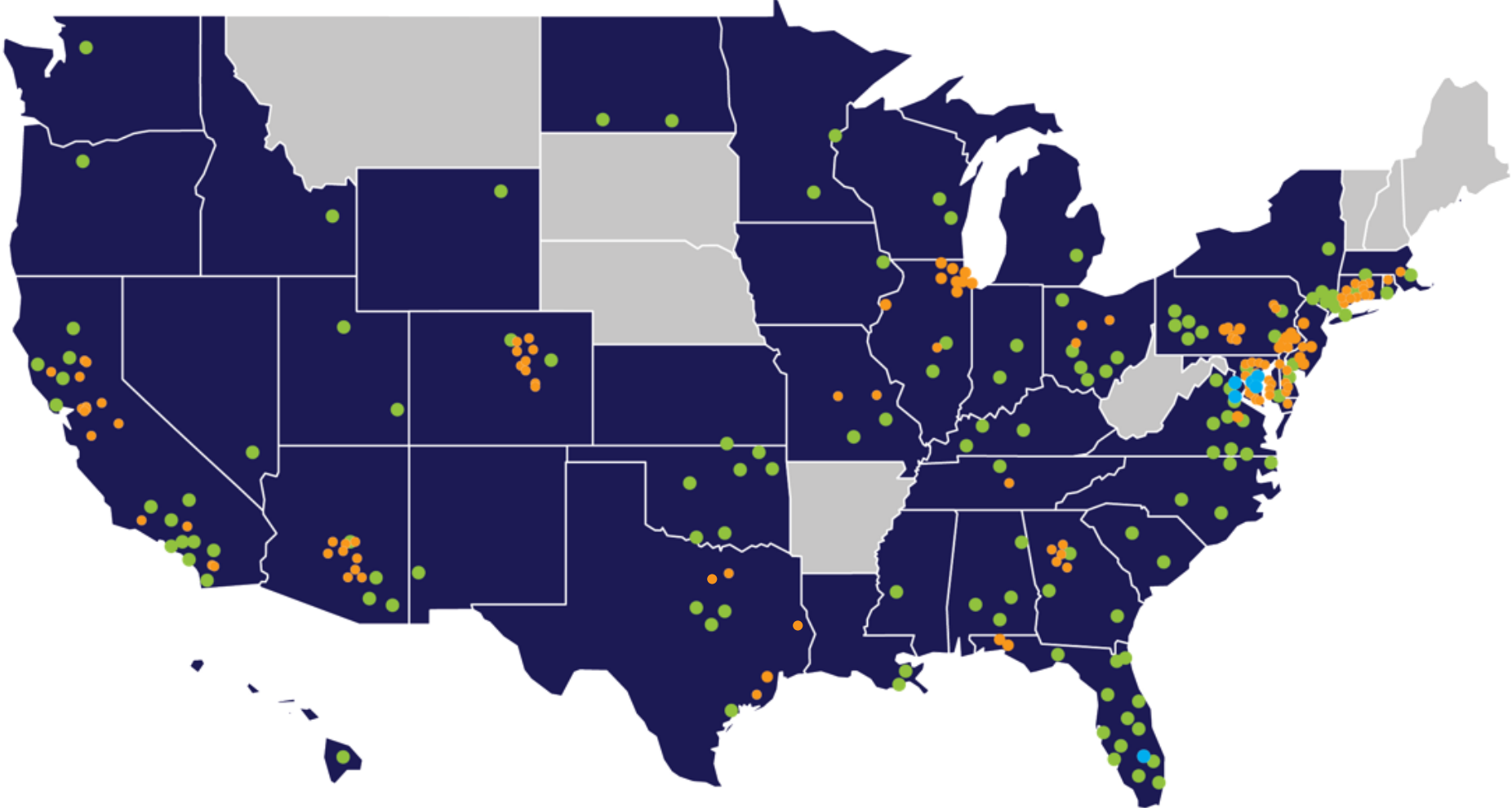


Together we strengthen the continuum of services



# Partnering to Support Students Across the Country

SESI operates standalone schools and manages in-district classrooms (IDCs) that serve students requiring intensive, therapeutic supports.



# District Programming Needs Identified in Texas

## Sierra School at Wylie ISD (HOPE)

- Early Elementary Students
- No Identified Disabilities
- High Aggression; Significant Code of Conduct Violations
- Nine-to-Eighteen Week Placement for Stabilization and Diagnostics

## Sierra School at Angleton ISD

- Middle School Students
- Emotional or Learning Disabilities
- High Aggression; Significant Code of Conduct Violations
- Individualized Academic and Therapeutic Supports

## Sierra School at Plano ISD

- Middle/High School Students
- Significant Cognitive Disabilities
- High Aggression; Self-Injurious Behaviors
- Partial Academic & Life Skills Instruction; ABA

### Early Behavioral Intervention



### Intensive Behavioral Needs



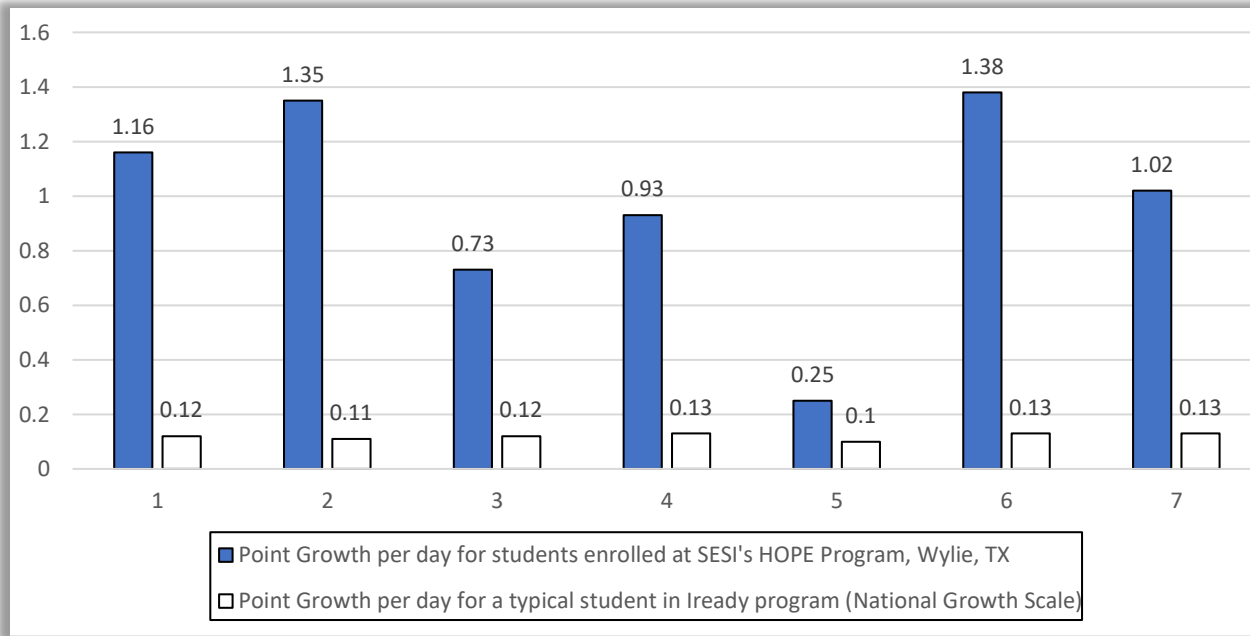
### Functional Communication Support



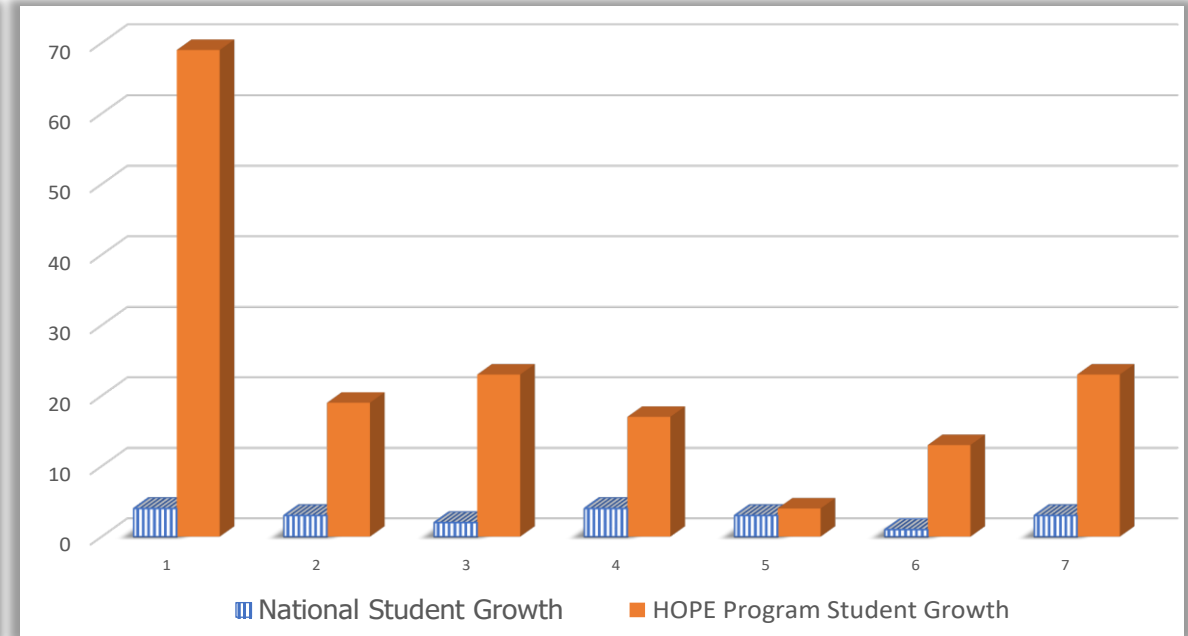
# Academic Growth

Sierra School at Wylie  
*Early Behavioral Intervention Model*

### Student Growth in Reading (SY21-22)



### Student Growth in Math (SY21-22)



**Sierra School at Wylie ISD vs National Average**  
**(18 weeks)**



# Partnering to Support Students In Texas



## REGION 10

- 🌱 Wylie ISD | Early Behavioral Intervention (K-2)
- 🌱 R10 @ Wylie | Intensive Behavioral Needs (4-6)
- 🌱 R10 @ Plano | Intensive Behavioral Needs (6-8)
- 🌱 R10 @ Plano | Intensive Behavioral Needs (9-12)
- 🌱 R10 @ Plano | Functional Communication Support (9-12)

## REGION 7

- 🌱 West Sabine ISD | Intensive Behavioral Needs (K-3)
- \*Partnership with SRSN/R15; TEA Engagement, Support & Feedback*

## REGION 4

- 🌱 Angleton ISD | Intensive Behavioral Needs (6-9)

# Partnering to Support Students In Texas



# Partnering to Support Students and Districts In Texas

## Student Benefits



Small, highly structured therapeutic learning environment



Individualized instruction and personalized behavioral support



District curriculum and targeted, research-based reading and math interventions



Opportunity for individually paced transition back to least restrictive environment



Increased opportunities for engagement in school and extracurricular activities

## District Benefits



Cost-effective programming for students at risk for out-of-district placement



Supportive setting for students returning from out-of-district placement



Trained classroom staff who operate a proven outcomes-based classroom model



Build capacity across the district to meet all IDEA and FAPE mandates



Flexible and customized programming to meet the unique needs of a district