



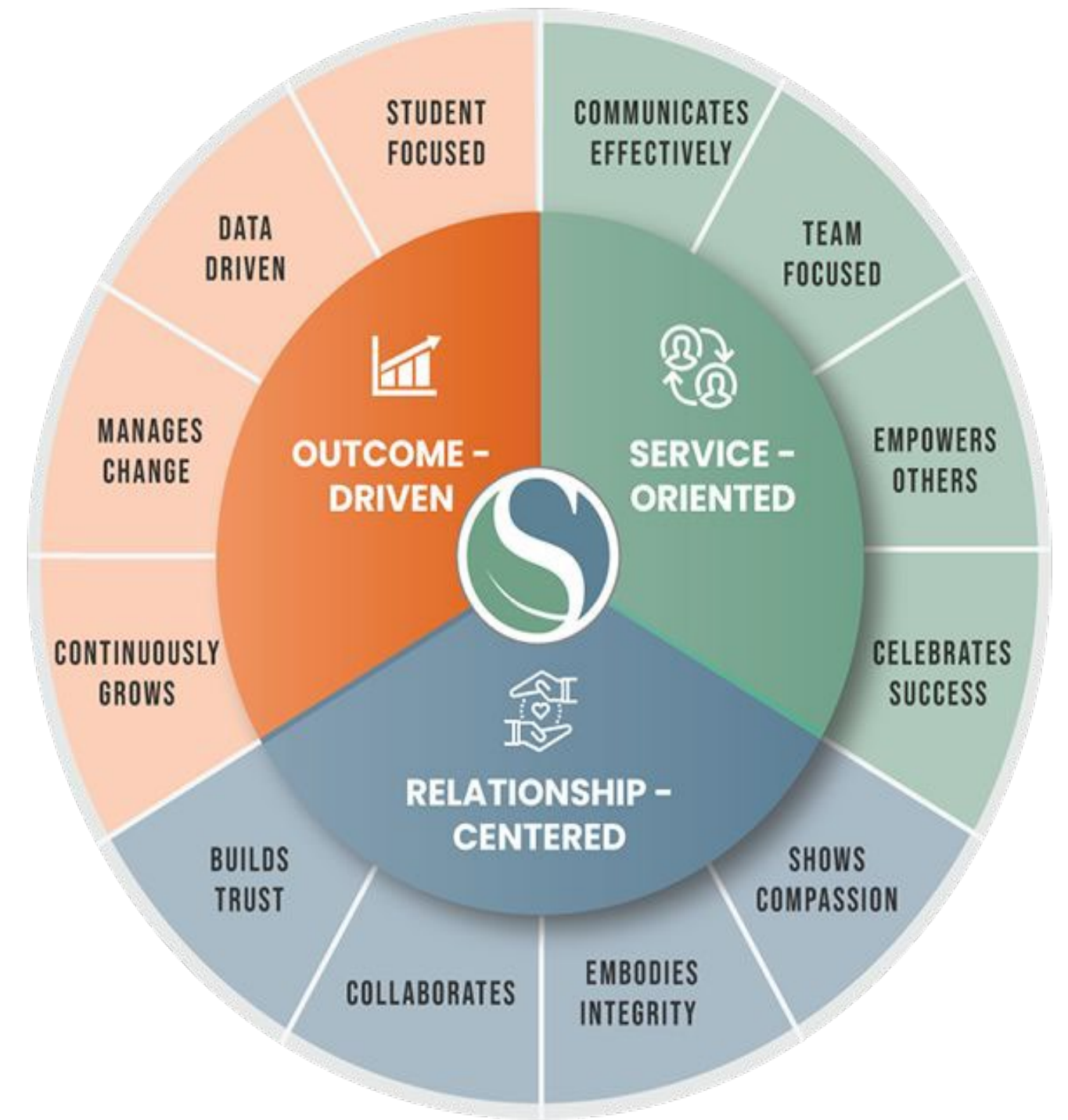
# Texas Commission on Special Education Funding

---

April 25, 2022



**Why / What**



**How / Who**



# Spring ISD At-A-Glance



Educating **33,537** Studer



**43** Campuses



Over **5,200** Employees





# District Population by Gender/Race

## Gender



48%



52%

## Race/Ethnicity

51%



Hispanic

38%



Black

5%



White

6%



Other



# Special Education Population by Gender/Race

## Gender



42%



68%

## Race/Ethnicity

42%



Hispanic

45%



Black

8%



White

3%



Other



# Special Education Population by Disability

**3,671** (10.9%)

**513** (14%)

Other Health  
Impairment (OHI)

**477** (13%)

Intellectual Disability  
(ID)

**294** (8%)

Emotional  
Disturbance (ED)

**844** (23%)

Specific Learning  
Disability (SLD)

**587** (16%)

Speech Impairment  
(SI)

**807** (22%)

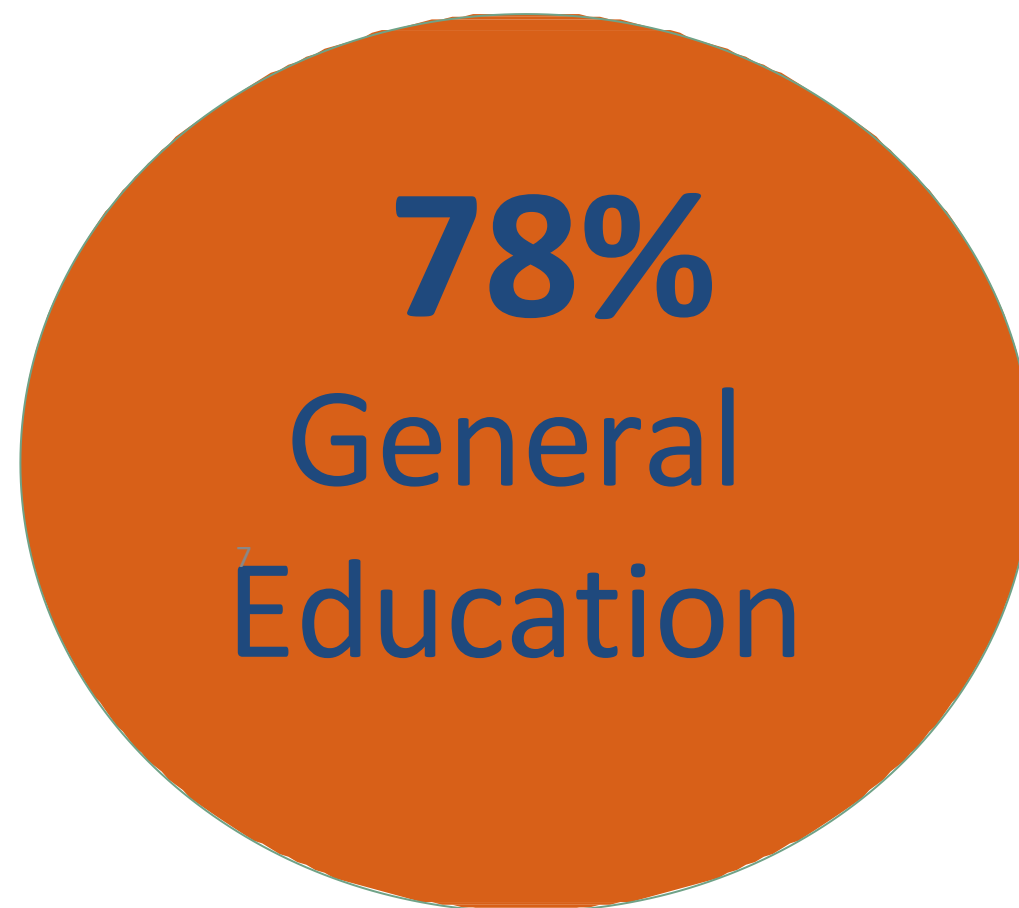
Autism (AU)



# SPED Population by Instructional Setting

**34%**  
Pull-out/Resource

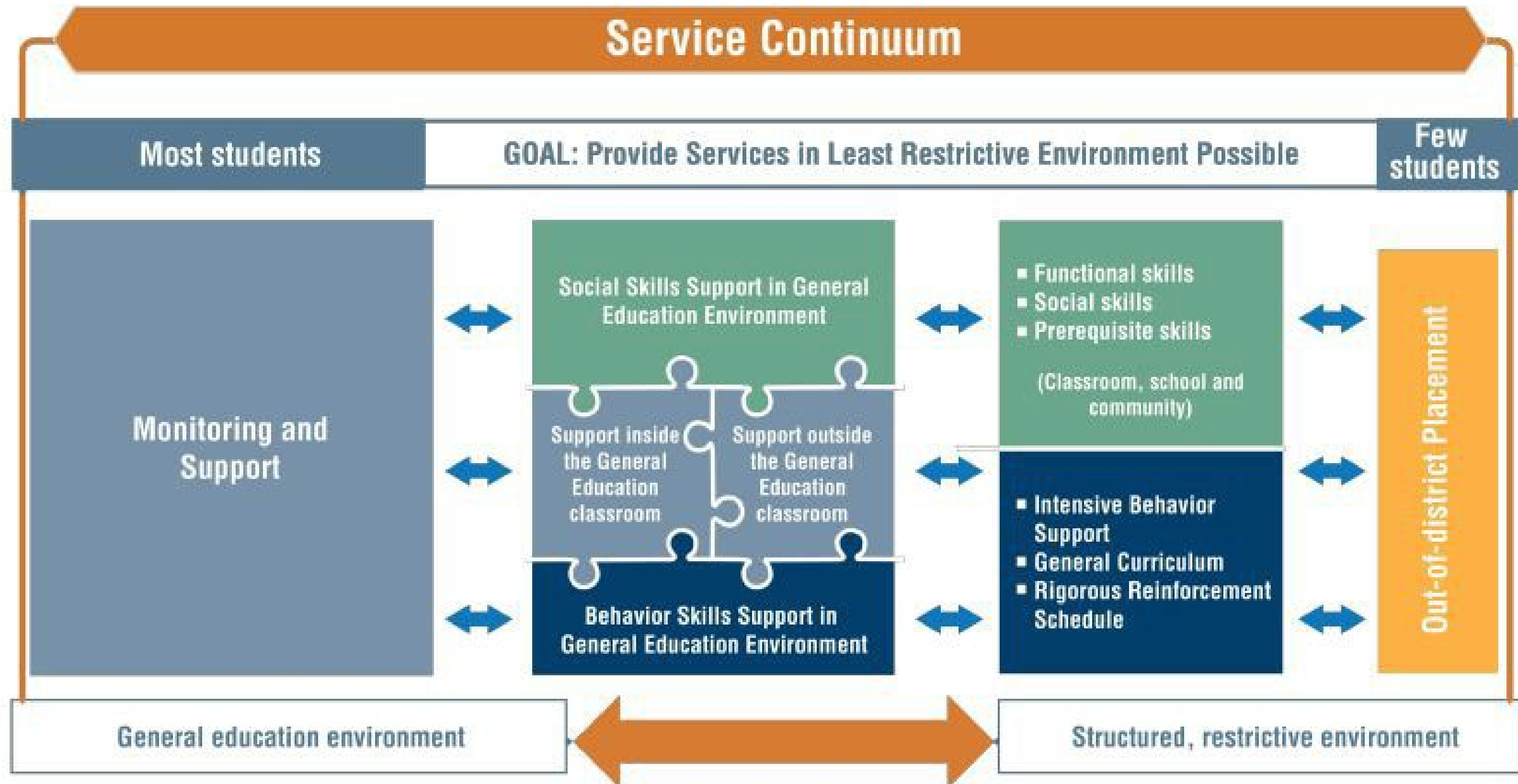
**17%**  
Self-Contained



**29%**  
Mainstream

**15%**  
Speech

# SPRING ISD'S SPECIAL EDUCATION CONTINUUM OF SERVICES





# STAFF SUPPORT FOR STUDENTS

Diagnosticians,  
LSSPs & SLPs

IEP/Compliance  
Specialists

Transition  
Specialists/  
Teachers &  
Trainers

IEP, Records,  
SEMS & SERS  
Clerks

Related  
Services Team

Special  
Education  
Teachers

Homebound &  
Itinerant  
Teachers

Specialists &  
Facilitators

District  
Coordinators

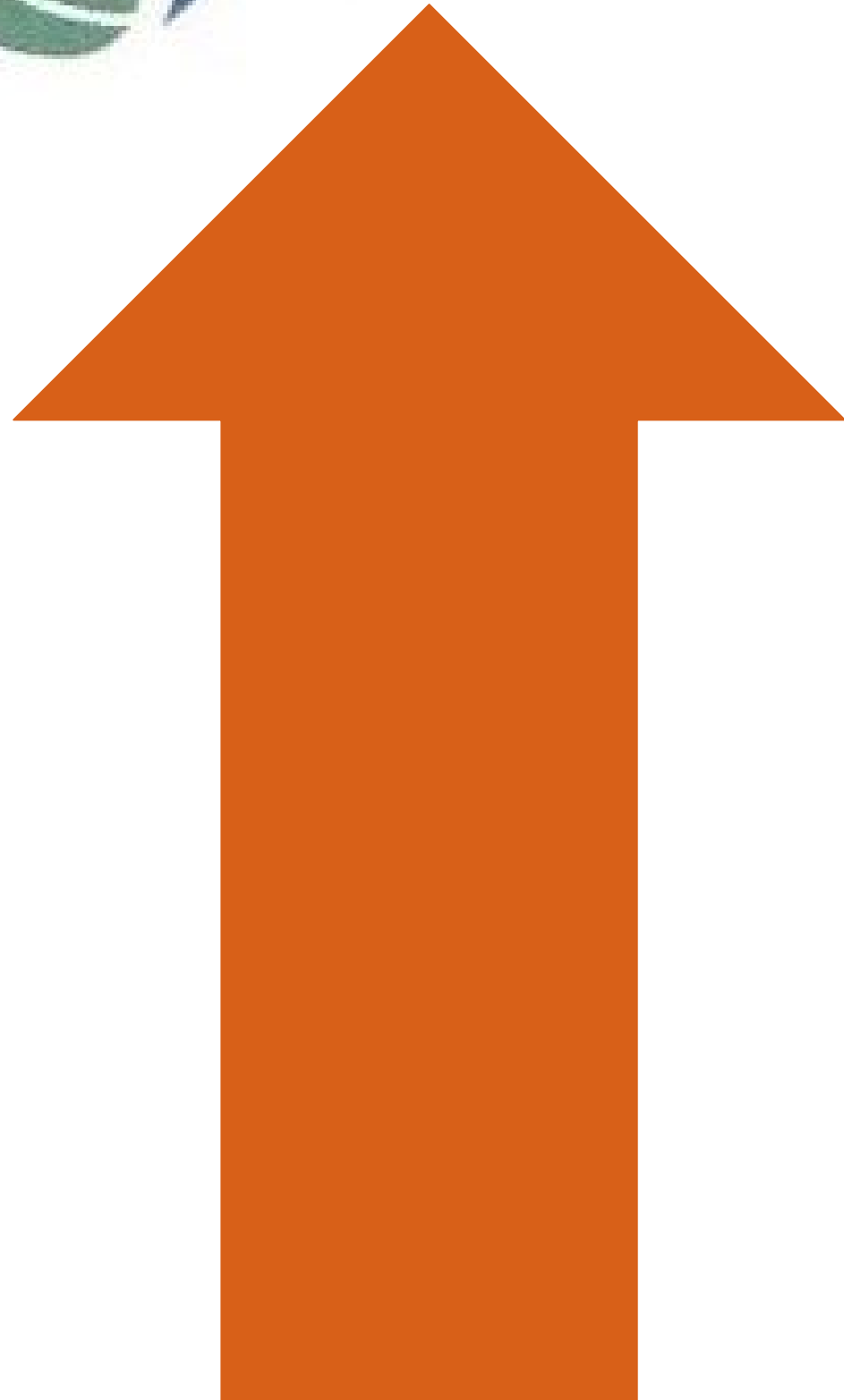
Receptionist &  
Translators

Dyslexia  
Teachers

504  
Coordinators



# Increased...




- Enrollment of Special Education Students
- Special Education Initial and Re-Evaluations
- Teacher and Aide Vacancies
- Assessment and Related Services Staff Vacancies
- Contractual Assessment Staff Rates
- Financial Obligations
- Compliance Challenges

# We Need Your **Help**

---

- 1. Base funding for special education on:**
  - a. Service Intensity
  - b. Student Enrollment
  
- 2. Allocate funding to support the recruitment, training, and retention of:**
  - a. Special Education Teachers
  - b. Paraprofessionals
  - c. Related Services Providers
  - d. Evaluation Personnel



“Whatever makes you uncomfortable is your biggest opportunity for growth.”

-Bryant McGill



**Thank You!!**