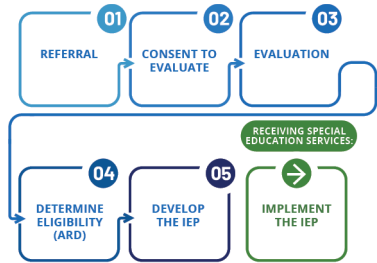


SPECIAL EDUCATION

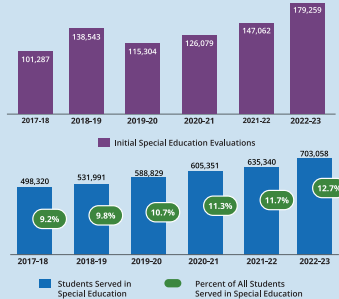
SPECIAL EDUCATION PROGRESS

Students with disabilities have the right to receive individualized learning opportunities. Parents have special legal rights to request a special education evaluation for their child at any time.

STEPS TO BEGIN RECEIVING SPECIAL EDUCATION SERVICES:



MORE STUDENTS EVALUATED AND SERVED



ORGANIZATIONS

TEXAS EDUCATION AGENCY  
COMMISSIONER OF EDUCATION  
20 EDUCATION SERVICE CENTERS

1,209 DISTRICTS  
(including 188 CHARTER OPERATIONS)

District Size	Enrollment (Fall 2022)	Number of Districts/Charters	% of All Students
50,000 & Over	1,414,000	17	25.62%
25,000-49,999	1,350,257	37	24.47%
10,000-24,999	1,072,759	67	19.44%
5,000-9,999	582,734	81	10.56%
3,000-4,999	354,531	91	6.42%
1,600-2,999	290,191	135	5.26%
1,000-1,599	189,985	149	3.44%
500-999	161,207	227	2.92%
Under 500	102,768	405	1.86%
<b>Total</b>	<b>5,518,432</b>	<b>1,209</b>	<b>100.00%</b>

9,054 CAMPUSES (INCLUDING 905 CHARTERS)

Campus Type	Enrollment (Fall 2022)	Number of Campuses	% of All Students
Elementary School	2,563,461	4,923	46.45%
Elementary/Secondary	244,919	600	4.44%
Middle School	983,048	1,475	17.81%
Junior High School	151,190	233	2.74%
High School	1,575,814	1,823	28.56%
<b>Total</b>	<b>5,518,432</b>	<b>9,054</b>	<b>100.00%</b>

PERSONNEL

DISTRICT STAFF BY CATEGORY

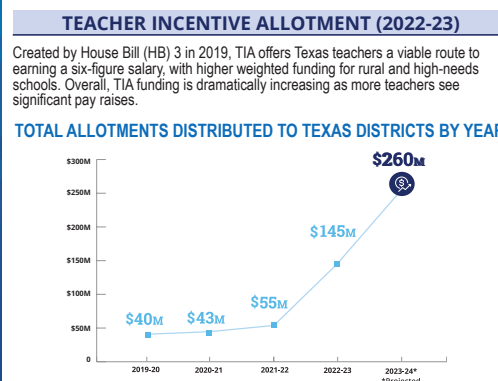
Category	Full-Time Equivalents	Avg. Base Salary
Teachers	371,778	\$60,705
Campus Administration	25,301	\$85,166
Central Administration	9,501	\$112,702
Professional Support	83,120	\$71,996
<b>Total Professionals</b>	<b>489,700</b>	<b>\$64,894</b>
Paraprofessionals	86,235	\$24,135
Auxiliary Staff	188,375	\$31,817
<b>Total Staff</b>	<b>764,310</b>	<b>\$52,143</b>

TEACHER PROFILES

	Full-Time Equivalents	% of Total
Gender	Females	281,006 (75.58%)
	Males	90,772 (24.42%)
Ethnicity	African American	44,042 (11.84%)
	American Indian or Alaska Nat.	1,275 (0.34%)
	Asian	7,313 (1.97%)
	Hispanic/Latino	110,058 (29.60%)
	Native Hawaiian/Other Pacific	515 (0.14%)
	White	204,042 (54.89%)
	Two or More Races	4,533 (1.22%)
Experience	First Year	36,188 (9.73%)
	1-5 years	97,677 (26.27%)
	6-10 years	76,224 (20.50%)
	11-20 years	101,191 (27.22%)
	20+ years	60,432 (16.26%)
N/A	66 (0.02%)	

\*Note: The numbers that appear in the FTE Count column are "Full Time Equivalent (FTE)" counts rather than head counts or number of persons.  
\*N/A - Charter Partner Teachers do not have EXPERIENCE.

LEGISLATION



HOUSE BILL 1605

TEXAS LEGISLATURE  
HB 1605  
88th Legislative Session

**New Resources for High-Quality Instructional Materials**

House Bill 1605 was passed in 2023 with biennial funding incentives for Texas school systems to provide high-quality instructional materials to teachers.

**\$540M** for acquiring materials  
**\$175M** for implementation supports

STRATEGIC PRIORITIES

TEA STRATEGIC PRIORITIES

EVERY CHILD, PREPARED FOR SUCCESS IN COLLEGE, CAREER, OR THE MILITARY

STRATEGIC PRIORITIES:

- RECRUIT, SUPPORT AND RETAIN TEACHERS AND PRINCIPALS
- BUILD A FOUNDATION FOR READING AND MATH
- CONNECT HIGH SCHOOL TO CAREER AND COLLEGE
- IMPROVE LOW-PERFORMING SCHOOLS

KEY ACTIONS:

- SUPPORTED EDUCATORS
- READY STUDENTS
- RIGOROUS ENGAGEMENT
- ALIGNED SYSTEMS
- ACTIONABLE GOALSETTING

CONTINUOUS IMPROVEMENT

tea.texas.gov TXschools.gov TexasAssessment.gov

Information contained in this pamphlet was compiled from data provided by the PEIMS collection, the TAPR, the TEA Payment Report, and the General Appropriations Act.

For more information, contact:  
Texas Education Agency  
Division of Communications: (512) 463-9000  
www.tea.texas.gov/communications/pocket-edition/

For additional copies of this brochure, visit:  
www.tea.texas.gov/publications/info/

January 2024

POCKET EDITION

2022-23 Texas Public School Statistics

Texas Education Agency  
Mike Morath  
Commissioner of Education

The Texas public school system consists of:

- 1,209 school districts and charters
- 9,054 campuses
- 371,778 teachers
- 5.518 million students

## STUDENTS BY DEMOGRAPHIC GROUP

	# of Students	% of Total	% Change (2022)
African American	706,775	12.8%	1.8%
American Indian or Alaska Nat	17,976	0.3%	-0.3%
Asian	280,742	5.1%	7.2%
Hispanic/Latino	2,921,416	52.9%	2.1%
Native Hawaiian/Other Pacific	8,718	0.2%	2.8%
White	1,416,240	25.7%	-0.8%
Two or More Races	166,565	3.0%	6.2%
<b>Total</b>	<b>5,518,432</b>	<b>100.0%</b>	<b>1.7%</b>
Economically Disadvantaged	3,421,217	62.0%	4.0%
Emergent Bilingual/English Learners	1,270,533	23.0%	8.1%

## STUDENTS BY GRADE

	# of Students	% of Total	% Change (2022)
Early Education	25,110	0.5%	17.5%
Pre-kindergarten	244,284	4.4%	9.2%
Kindergarten	367,633	6.7%	-1.0%
Grade 1	399,419	7.2%	3.4%
Grade 2	395,969	7.2%	3.2%
Grade 3	393,871	7.1%	2.3%
Grade 4	394,020	7.1%	2.1%
Grade 5	395,384	7.2%	1.4%
Grade 6	399,557	7.2%	-0.2%
Grade 7	409,566	7.4%	-2.2%
Grade 8	425,758	7.7%	0.3%
Grade 9	478,101	8.7%	0.5%
Grade 10	437,002	7.9%	6.9%
Grade 11	386,246	7.0%	-0.8%
Grade 12	366,512	6.6%	1.2%
<b>Total</b>	<b>5,518,432</b>	<b>100.0%</b>	<b>1.7%</b>

## COMPLETION GRADES 9-12 (CLASS OF 2022)

	Graduated	Rec'd TxCHSE*	Cont'd H.S.	Dropped Out (4-yr.)
African American	85.6%	0.3%	4.5%	9.6%
American Indian	88.4%	0.3%	3.5%	7.8%
Asian	96.8%	0.1%	1.7%	1.4%
Hispanic	88.0%	0.2%	4.2%	7.6%
Pacific Islander	88.9%	0.3%	3.8%	6.9%
White	93.8%	0.5%	2.2%	3.6%
Two or More Races	90.6%	0.5%	3.3%	5.6%
Special Ed	79.1%	0.2%	11.3%	9.4%
Econ. Disadv.	86.4%	0.3%	4.3%	9.0%
EB/EL	79.9%	0.1%	5.6%	14.4%
<b>State</b>	<b>89.7%</b>	<b>0.3%</b>	<b>3.5%</b>	<b>6.4%</b>

\*Note: Texas Certificate of High School Equivalency.

## PERCENT COLLEGE, CAREER and MILITARY READY (CLASS OF 2022)

	College, Career, and Military Ready	College Ready	Career/Military Ready	Approved Industry-Based Certification
African American	56.2%	36.2%	29.8%	21.6%
American Indian	67.7%	50.0%	33.6%	26.4%
Asian	87.1%	82.8%	25.0%	22.9%
Hispanic	68.4%	48.9%	36.5%	30.9%
Pacific Islander	60.5%	45.7%	26.4%	20.0%
White	76.0%	62.2%	31.8%	26.8%
Two or More Races	69.0%	55.2%	27.9%	22.3%
Special Ed	79.0%	13.6%	78.1%	19.3%
Econ. Disadv.	65.3%	44.0%	36.5%	30.1%
EB/EL	58.6%	33.0%	36.1%	28.1%
<b>State</b>	<b>70.0%</b>	<b>52.9%</b>	<b>33.5%</b>	<b>28.0%</b>

## STAAR PERCENT AT MEETS GRADE LEVEL OR ABOVE (ALL GRADES)

	All Subjects	Reading	Mathematics	Science	Social Studies
ALL STUDENTS	49%	53%	45%	47%	52%
African American	36%	41%	30%	33%	40%
American Indian	49%	53%	44%	48%	52%
Asian	81%	83%	81%	78%	81%
Hispanic	42%	46%	38%	39%	45%
Pacific Islander	49%	53%	45%	47%	51%
White	64%	68%	59%	64%	65%
Two or More Races	58%	63%	52%	57%	60%
Econ. Dis.	38%	42%	34%	36%	41%

## STAAR PERCENT AT MEETS GRADE LEVEL OR ABOVE (ONLY END OF COURSE EXAMS)

	English I	English II	Algebra I	Biology	U.S. History
ALL STUDENTS	52%	54%	43%	56%	70%
African American	40%	42%	29%	41%	58%
American Indian	53%	54%	40%	57%	73%
Asian	85%	83%	84%	88%	91%
Hispanic	45%	46%	38%	48%	64%
Pacific Islander	53%	55%	46%	59%	72%
White	70%	73%	57%	75%	83%
Two or More Races	64%	67%	51%	69%	80%
Econ. Dis.	41%	43%	34%	44%	60%

## KINDERGARTEN READINESS

Category	Number Kinder Ready*	Number Assessed	Rate (%) Kinder Ready
All assessed kindergartners	165,048	337,460	48.9%
Eligible, attended public prekindergarten	78,004	145,715	53.5%
Eligible, did not attend public kindergarten	24,792	89,049	27.8%
Not eligible	62,252	102,696	60.6%

To be eligible to attend a state funded prekindergarten program, the child must meet one of the following prekindergarten eligibility criteria:

- is educationally disadvantaged, which means a student eligible to participate in the national free or reduced-price lunch program;
- is unable to speak and comprehend the English language;
- is homeless;
- is the child of an active duty member of the armed forces of the United States;
- is the child of a member of the armed forces who was injured or killed while on active duty;
- is the child of a person eligible for the Star of Texas Award as a peace officer, firefighter, or emergency medical first responder; or
- is or ever has been in foster care.

\*Note: There are 2 kindergarten readiness assessments. Each has its own readiness threshold.

## STUDENTS BY PROGRAM

	Number of Students	% of Total	% Change from 2022
Bilingual/ESL Education	1,056,950	19.7%	7.09%
Gifted & Talented Education	453,689	8.4%	2.22%
Special Education	702,785	13.1%	16.15%

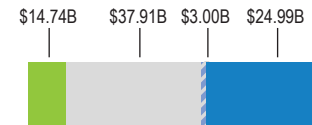
## TOTAL PUBLIC EDUCATION SPENDING (FY 2022)

## TOTAL FUNDING (BILLION)



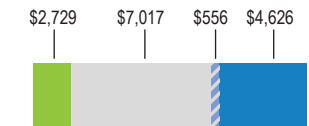
TOTAL FUNDING  
**\$80.64B**

## TOTAL FUNDING SNAPSHOT



PER STUDENT FUNDING  
**\$14,928**

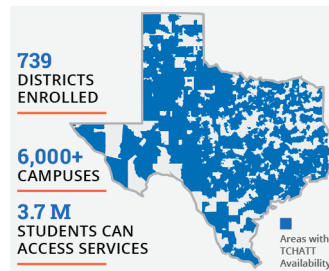
## PER STUDENT FUNDING SNAPSHOT



## SCHOOL SAFETY

## SUPPORTING SAFER SCHOOLS

Ensuring the safety of Texas students, educators, and campus staff is paramount. The Texas Legislature continues to enact policies and allocate resources for Texas school systems to enhance safety measures and safeguard their campuses.

SUPPORTING MENTAL HEALTH  
TCHAT SERVICE AVAILABILITY

## 2022-25 FUNDING TO SECURE TEXAS SCHOOLS

